

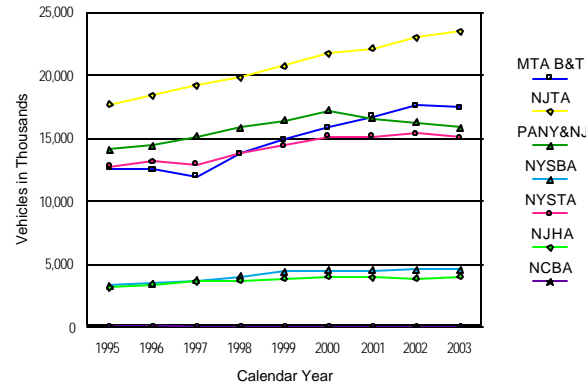
ANNUAL TRUCK TOLL VOLUME - 2003

Freight transportation is a critical component of the New York Metropolitan Transportation Council's Regional Transportation Plan. The Council collects and analyzes relevant data in the assessment of progress toward the achievement of its transportation plans, goals and objectives. The monitoring of truck volumes is identified as a performance measure. The monitored data are collected on an ongoing basis from public agencies that operate toll facilities in the five boroughs of the New York City, as well as sections of the Garden State Parkway, New Jersey Turnpike, and upstate bridges. The monitored data are analyzed for a 24-month period for 2002 and 2003 and provide information on highway-based freight movement in the metropolitan region.

Data Sources:

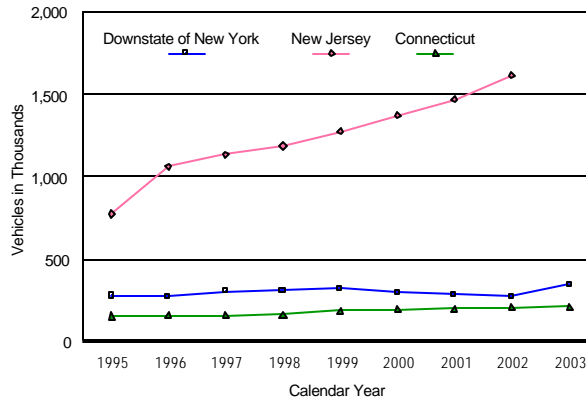
- MTA B&T - Metropolitan Transportation Agency - Bridges and Tunnels
- PANY&NJ - Port Authority of New York and New Jersey
- NYSTA - New York State Thruway Authority
- NYSBA - New York State Bridge Authority
- NJHA - New Jersey Highway Authority (Garden State Parkway)
- NJTA - New Jersey Turnpike Authority
- NCBA - Nassau County Bridge Authority

TRUCK TOLL VOLUME TRENDS

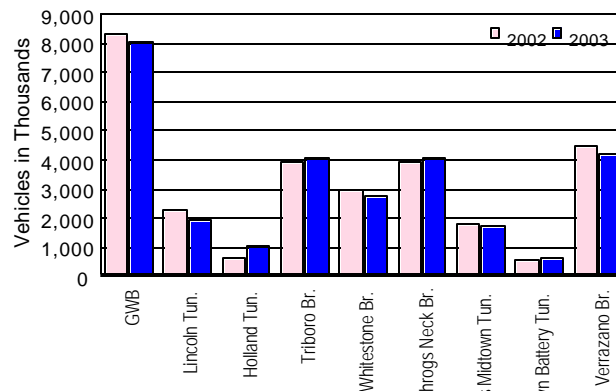


Source: Toll Agency data

ANNUAL COMMERCIAL VEHICLE REGISTRATIONS



SELECTED RIVER CROSSINGS ANNUAL TRUCK TOLL VOLUMES



Source: Toll Agency data

Truck Toll River Crossings

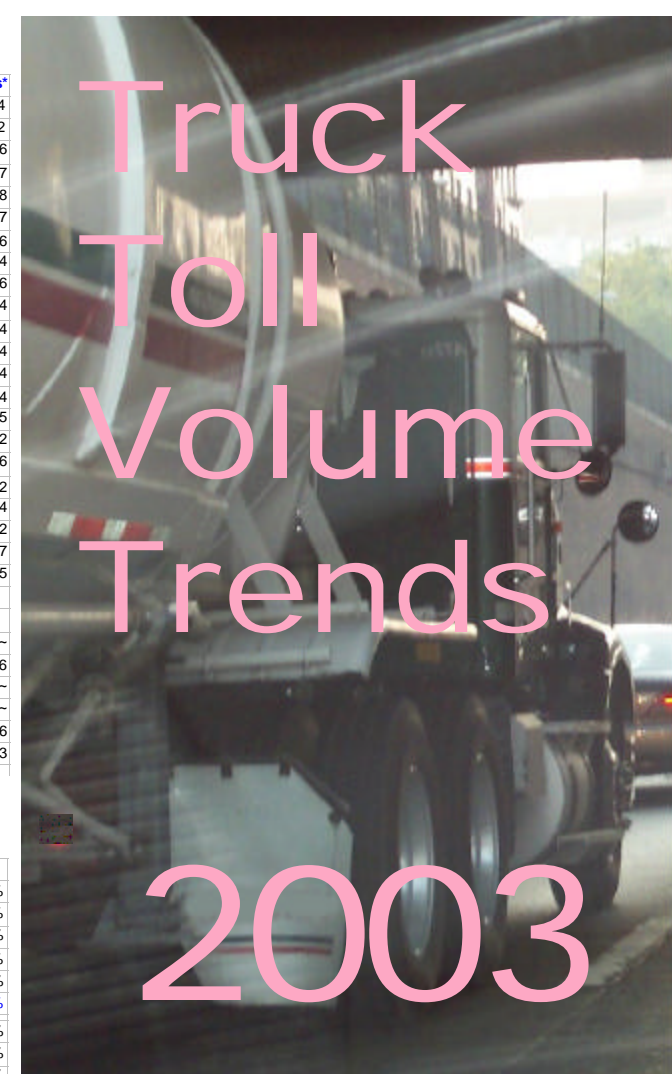
	2002 Volume	2003 Volume	Lanes*
George Washington Br. (PANYNJ): I-95	8,310,766	8,046,228	14
Verrazano Narrow Br. (MTA B&T): I-278	4,501,404	4,225,158	12
Throgs Neck Br. (MTA B&T): I-278	3,941,390	4,056,961	6
Newburgh-Beacon Br.(NYSBA): I-84	3,480,758	3,474,546	7
Triborough Br. (MTA B&T): I-278	3,271,440	3,443,981	8
Tappan Zee Br. (NYSTA): I-278	3,221,606	3,233,316	7
Bronx-Whitestone Br. (MTA B&T): I-678	2,946,750	2,776,797	6
Goethals Br. (PANYNJ): I-278	2,829,366	2,375,540	4
Lincoln Tun. (PANYNJ): I-495	2,278,722	1,970,344	6
Queens-Midtown Tun. (MTA B&T): I-495	1,784,382	1,729,185	4
Outerbridge Crossing (PANYNJ): N-440	1,456,984	1,706,340	4
Holland Tun. (PANYNJ): I-78	647,678	1,088,210	4
Brooklyn Battery Tun. (MTA B&T): I-478	579,672	663,146	4
Bayonne Br. (PANYNJ): NY-440	714,278	633,640	4
Mid-Hudson Br. (NYSBA): US-44	459,868	473,846	5
Rip Van Winkle Br. (NYSBA): NY-23	271,632	279,456	2
Cross-Bay Boulevard Br. (MTA B&T)	269,734	277,183	6
Kingston-Rhinecliff Br. (NYSBA): US-209	231,486	247,024	2
Marine Parkway Br. (MTA B&T)	168,004	171,249	4
Bear Mountain Br. (NYSBA): US-6	157,236	149,716	2
Henry Hudson Br. (MTA B&T): NY-9A	97,370	111,408	7
Atlantic Beach Br. (NCBA)	85,420	89,951	5

Toll Barriers/Interchanges	2002 Volume	2003 Volume	
NJ Turn Pike 7A-18	22,994,276	23,468,031	6-14 lanes-
New Rochelle (NYSTA): I-95	5,670,394	5,299,700	6
NJHA-Garden State Pkwy^	3,845,033	4,041,876	2-4 lanes-
Spring Valley (NYSTA): I-87/287	2,853,734	2,795,814	3-4 lanes-
Yonkers (NYSTA): I-87	2,268,044	2,241,339	6
Harriman (NYSTA): I-87	1,343,175	1,454,591	3

^ Includes trucks weighing 3.5 tons or less * Travel lanes, not toll plaza lanes
Source: Operating Agency monthly records - depending on highway segment

Commercial Vehicle Registrations

County	2002	2003	2002/2003
Bronx	8,740	9,353	7.0%
Kings	18,697	12,421	-33.6%
New York	12,884	19,369	50.3%
Queens	32,515	35,085	7.9%
Richmond	5,983	8,046	34.5%
New York City	78,819	84,274	6.9%
Dutchess	18,379	25,439	38.4%
Orange	25,665	34,381	34.0%
Westchester	24,593	30,724	24.9%
Putnam	5,281	7,626	44.4%
Rockland	8,242	11,214	36.1%
Hudson Valley	82,160	109,384	33.1%
Nassau	31,506	43,448	37.9%
Suffolk	80,105	109,850	37.1%
Long Island	111,611	153,298	37.4%
Fairfield County	79,324	81,858	3.2%
Lichtfield	35,568	36,493	2.6%
New Haven	89,592	91,421	2.0%
South-Western Connecticut	204,484	209,772	2.6%
Bergen	207,760	222,864	7.3%
Essex	133,322	142,043	6.5%
Hudson	80,341	85,877	6.9%
Middlesex	174,800	188,715	8.0%
Monmouth	175,234	190,724	8.8%
Morris	149,365	159,899	7.1%
Passaic	111,287	121,142	8.9%
Sommerset	87,150	92,888	6.6%
Union	117,144	126,548	8.0%
New Jersey	1,236,403	1,330,700	7.6%
Total Region	1,713,477	1,887,428	10.2%



Truck Toll Volume Trends

2003

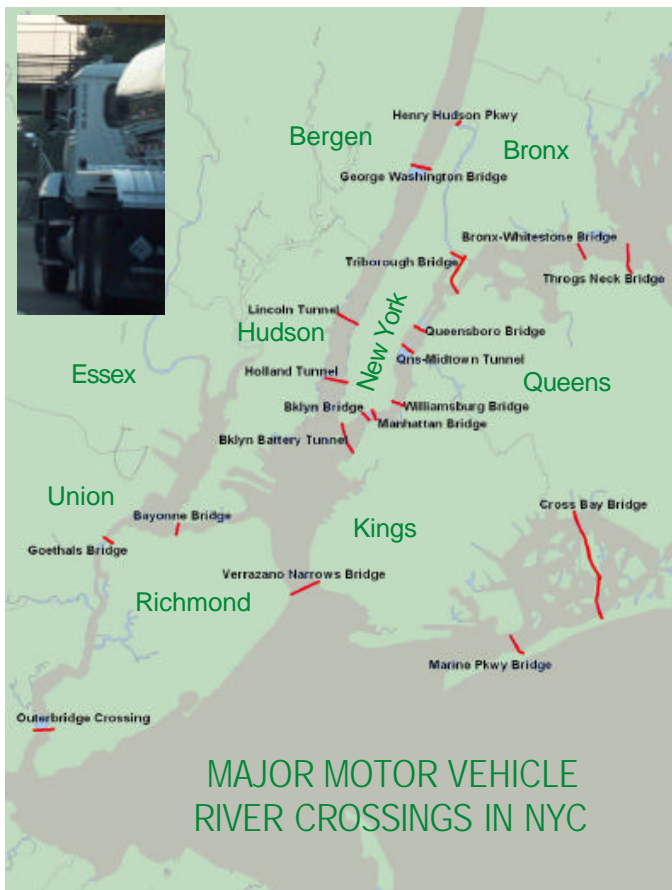
At a Glance

NEW YORK METROPOLITAN TRANSPORTATION COUNCIL

October 2004

www.nymtc.org

199 Water Street
New York, NY 10038
Tel: 212.383.7200 Fax: 212.383.2418



MAJOR MOTOR VEHICLE RIVER CROSSINGS IN NYC

