

NEW YORK METROPOLITAN TRANSPORTATION COUNCIL



R
E
P

S

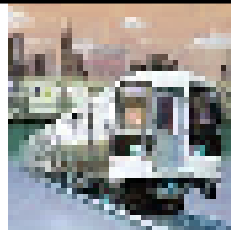


TRANSPORTATION

F
E
T
Y

2000

R
T



This New York Metropolitan Transportation Council report was compiled and written by **Salvatore Mamone**, Transportation Analyst, under the supervision of **Leokadia Glogowski**, Senior Transportation Analyst. Preparation was funded by the Federal Highway and Federal Transit Administrations of the United States Department of Transportation, and the New York State Department of Transportation. The contents of this report reflect the views of the author who is responsible for the fact and accuracy of the data presented herein. The contents do not necessarily reflect the official views or policies of the Federal Highway and Transit administrators or the State of New York. This report does not constitute a standard, specification, or regulation.

Project Number: PT1845801.39

NYMTC appreciates the cooperation of all the agencies that have provided information for the **2000 Transportation Safety Report**. Through their submissions, this report continues to be a useful source of transportation statistical information on the NYMTC region and environs.

NEW YORK METROPOLITAN TRANSPORTATION COUNCIL

45-46 21st Street

Long Island City, NY 11101-5407

Telephone: (718) 472-3046 Fax (718) 472-3338

Internet address: www.nymtc.org

November 2002

CONTENTS

	Page
Introduction	1
Part I - Transportation Safety Analysis and Comparisons	
I Overview	5
Safety on the Highway and Transit Systems	5
II Motor Vehicle Safety	6
1. Crashes Resulting In A Fatality, Injury or Property Damage	6
A. Fatal Crashes	6
B. Injuries	6
C. Property Damage	6
2. Contributing Factors: Human, Environment, and Vehicular	7
3. Crashes Between People And Vehicles	8
A. Crashes Involving Male and Female Drivers And Their Age	8
B. Vehicular/Pedestrian Crashes At Intersections And Mid-Block Locations	8
C. Motor Vehicle/Bicycle Crashes	9
4. Crashes on Road System By Roadway Jurisdiction	9
5. Crashes By Vehicle	10
A. Vehicles Involved In Crashes Resulting In Fatalities	10
B. Vehicles Involved In Crashes Resulting In Injury	10
C. Vehicles Involved In Crashes Resulting In Property Damage	10
6. Crashes By Manner Of Two Vehicle Collisions	11
7. Crashes By Day Of Week	11
III Transit Safety	11
1. Rail Accidents	11
2. Bus Accidents	12
Part II Transportation Safety Data Graphs	
Index of Graphs	13
Part III Transportation Safety Data Tables	
Index of Tables	34

TABLE A (page 1)
NEW YORK METROPOLITAN CATEGORICAL RANKINGS
2000 MOTOR VEHICLE CRASH DATA

MOTOR VEHICLE CRASHES Total Number	MOTOR VEHICLE CRASHES Resulting in Fatality		MOTOR VEHICLE CRASHES Resulting in Injury		MOTOR VEHICLE CRASHES Resulting in Property Damage		MOTOR VEHICLE CRASHES by Contributing Human Factors		MOTOR VEHICLE CRASHES by Contributing Vehicular Factors		
	1	2	1	2	1	2	1	2	1	2	
1 Kings	38,151	1 Suffolk	151	1 Kings	27,190	1 Nassau	20,318	1 Kings	39,450	1 Kings	2,637
2 Nassau	37,716	2 Kings	105	2 Queens	24,459	2 Suffolk	19,470	2 Nassau	34,301	2 Queens	1,902
3 Queens	36,578	3 Queens	100	3 Nassau	17,304	3 Queens	12,019	3 Suffolk	32,640	3 New York	1,169
4 Suffolk	34,854	4 Nassau	94	4 Suffolk	15,233	4 Kings	10,856	4 Queens	30,717	4 Bronx	1,031
5 New York	24,609	5 New York	70	5 New York	14,624	5 Westchester	10,425	5 New York	24,709	5 Suffolk	884
6 Bronx	19,953	6 Westchester	56	6 Bronx	13,194	6 New York	9,913	6 Bronx	18,748	6 Nassau	773
7 Westchester	19,153	7 Bronx	49	7 Westchester	8,672	7 Bronx	6,710	7 Westchester	13,524	7 Westchester	645
8 Orange	9,604	8 Orange	30	8 Richmond	3,805	8 Orange	5,912	8 Orange	7,993	8 Orange	362
9 Dutchess	7,041	9 Dutchess	29	9 Orange	3,662	9 Dutchess	4,257	9 Rockland	6,520	9 Rockland	277
10 Rockland	7,262	10 Richmond	24	10 Rockland	3,160	10 Rockland	4,084	10 Dutchess	5,495	10 Richmond	254
11 Richmond	6,258	11 Rockland	18	11 Dutchess	2,755	11 Richmond	2,429	11 Richmond	5,106	11 Dutchess	225
12 Putnam	2,649	12 Putnam	10	12 Putnam	959	12 Putnam	1,680	12 Putnam	2,199	12 Putnam	86
Total	243,828	Total	736	Total	135,017	Total	108,073	Total	221,402	Total	10,245

CRASHES BY CONTRIBUTING Environmental Factors	VEHICLES INVOLVED In All Types of Crashes		VEHICLES INVOLVED In Crashes Resulting in Fatality		VEHICLES INVOLVED In Crashes Resulting in Injury		VEHICLES INVOLVED In Crashes Resulting in Prop. Damage		MALE DRIVERS Involved in Motor Vehicle Crashes		
	1	2	1	2	1	2	1	2	1	2	
1 Suffolk	6,659	1 Nassau	75,342	1 Suffolk	258	1 Kings	52,592	1 Nassau	40,569	1 Kings	47,744
2 Nassau	5,315	2 Kings	75,273	2 Kings	166	2 Queens	48,429	2 Suffolk	37,393	2 Queens	45,475
3 Queens	3,827	3 Queens	73,185	3 Nassau	160	3 Nassau	34,613	3 Queens	24,610	3 Nassau	40,013
4 Kings	3,599	4 Suffolk	67,185	4 Queens	146	4 Suffolk	29,534	4 Kings	22,515	4 Suffolk	35,750
5 Westchester	3,378	5 New York	46,220	5 New York	97	5 New York	26,036	5 New York	20,087	5 New York	32,646
6 Orange	3,085	6 Bronx	38,989	6 Westchester	93	6 Bronx	25,277	6 Westchester	18,895	6 Bronx	25,181
7 Dutchess	2,301	7 Westchester	35,347	7 Bronx	73	7 Westchester	16,359	7 Bronx	13,639	7 Westchester	19,181
8 Bronx	2,028	8 Orange	16,044	8 Dutchess	48	8 Richmond	7,466	8 Orange	9,496	8 Orange	8,821
9 New York	1,954	9 Rockland	13,587	9 Orange	43	9 Orange	6,505	9 Rockland	7,460	9 Rockland	7,813
10 Rockland	1,558	10 Richmond	12,420	10 Richmond	39	10 Rockland	6,103	10 Dutchess	6,645	10 Richmond	6,751
11 Putnam	944	11 Dutchess	11,547	11 Rockland	24	11 Dutchess	4,854	11 Richmond	4,915	11 Dutchess	6,452
12 Richmond	816	12 Putnam	4,358	12 Putnam	19	12 Putnam	1,671	12 Putnam	2,668	12 Putnam	2,577
Total	35,464	Total	469,497	Total	1,166	Total	259,439	Total	208,892	Total	278,404

TABLE A (page 2)
NEW YORK METROPOLITAN CATEGORICAL RANKINGS
2000 MOTOR VEHICLE CRASH DATA

	FEMALE DRIVERS In Motor Vehicle Crashes	VEHICULAR/PEDESTRIAN Crashes at Intersection	VEHICULAR/PEDESTRIAN Crashes Not at Intersection	TOTAL PEDESTRIAN Fatalities	TOTAL BICYCLIST Killed or Injured	CRASHES BY Contributing Alcohol Involvement #’s	CRASHES BY Contributing Alcohol Involvement %
1	Nassau 28,094	1 Kings 2,761	1 Kings 1,330	1 Kings 60	1 Kings 1329	1 Suffolk 924	1 Dutchess 2.1
2	Suffolk 25,163	2 New York 2,288	2 New York 1,191	2 New York 50	2 New York 1153	2 Nassau 665	2 Putnam 2.1
3	Queens 17,606	3 Queens 1,641	3 Queens 900	3 Queens 38	3 Queens 735	3 Westchester 493	3 Orange 1.7
4	Kings 14,965	4 Bronx 1,169	4 Bronx 689	4 Suffolk 33	4 Nassau 584	4 Kings 443	4 Westchester 1.6
5	Westchester 12,798	5 Nassau 577	5 Nassau 447	5 Nassau 28	5 Suffolk 527	5 Queens 373	5 Suffolk 1.3
6	Bronx 8,107	6 Westchester 368	6 Suffolk 345	6 Bronx 25	6 Bronx 510	6 Orange 291	6 Rockland 1.2
7	New York 6,607	7 Suffolk 248	7 Westchester 325	7 Westchester 11	7 Westchester 180	7 Dutchess 256	7 Nassau 0.9
8	Orange 6,088	8 Richmond 183	8 Richmond 158	8 Richmond 7	8 Richmond 97	8 New York 236	8 Richmond 0.7
9	Rockland 4,883	9 Rockland 69	9 Orange 99	9 Rockland 4	9 Orange 75	9 Bronx 215	9 Bronx 0.5
10	Dutchess 4,482	10 Orange 54	10 Rockland 81	10 Dutchess 1	10 Dutchess 64	10 Rockland 173	10 Kings 0.6
11	Richmond 4,109	11 Dutchess 34	11 Dutchess 29	11 Orange 1	11 Rockland 52	11 Putnam 98	11 Queens 0.5
12	Putnam 1,530	12 Putnam 7	12 Putnam 17	12 Putnam 1	12 Putnam 5	12 Richmond 74	12 New York 0.5
Total	134,432	9,399	5,611	259	5311	4,241	

TABLE B
NYMTC REGIONAL RECAPITULATION

	1998	1999	2000	1998/99 (%)	1999/2000 (%)
MOTOR VEHICLE CRASHES					
TOTAL NUMBER OF MOTOR VEHICLE CRASHES	194,074	224,555	243,828	15.7	8.6
CRASHES RESULTING IN FATALITY	768	808	736	5.2	-8.9
CRASHES RESULTING IN INJURY	130,722	130,757	135,017	0.0	3.3
CRASHES RESULTING IN PROPERTY DAMAGE	62,584	92,990	108,073	48.6	16.2
CRASHES BY CONTRIBUTING HUMAN FACTORS	167,083	201,750	221,402	20.7	9.7
CRASHES BY CONTRIBUTING VEHICULAR FACTORS	8,758	10,184	10,245	16.3	0.6
CRASHES BY CONTRIBUTING ENVIRONMENTAL FACTORS	28,300	31,533	35,464	11.4	12.5
VEHICLES INVOLVED IN ALL TYPES OF CRASHES	370,158	431,834	469,497	16.7	8.7
VEHICLES INVOLVED IN CRASHES RESULTING IN FATALITY	1,162	1,228	1,166	5.7	-5.0
VEHICLES INVOLVED IN CRASHES RESULTING IN INJURY	248,146	249,938	259,439	0.7	3.8
VEHICLES INVOLVED IN CRASHES RESULTING IN PROPERTY DAMAGE	120,850	180,666	208,892	49.5	15.6
MOTOR VEHICLE CRASHES INVOLVING MALE DRIVERS	221,927	257,742	278,404	16.1	8.0
MOTOR VEHICLE CRASHES INVOLVING FEMALE DRIVERS	111,416	125,039	134,432	12.2	7.5
VEHICULAR/PEDESTRIAN CRASHES AT INTERSECTION	10,498	9,811	9,399	-6.5	-4.2
VEHICULAR/PEDESTRIAN CRASHES NOT AT INTERSECTION	5,952	5,828	5,611	-2.1	-3.7
PEDESTRIAN FATALITIES IN VEHICULAR/PEDESTRIAN CRASHES	283	296	259	4.6	-12.5
TOTAL BICYCLISTS KILLED OR INJURED	6,646	5,883	5,311	-11.5	-9.7
BICYCLIST FATALITIES IN VEHICULAR/BICYCLE CRASHES	34	35	26	2.9	-25.7
TRANSIT ACCIDENTS					
TRANSIT ACCIDENTS					
TOTAL	97	78	81	-19.6	3.8
FATALITIES	10	14	14	40.0	0.0
INJURIES	468	425	487	-9.2	14.6
RATIO PER MILLION RIDERS	0.049	0.037	0.036	-24.5	-2.7
RATIO PER MILLION VEHICLE MILES TRAVELED	0.190	0.149	0.150	-21.6	0.7
BUS TRANSIT ACCIDENTS					
TOTAL	65	56	53	-13.8	-5.4
FATALITIES	4	9	9	125.0	0.0
INJURIES	455	353	366	-22.4	3.7
RATIO PER MILLION RIDERS	0.101	0.080	0.073	-20.8	-8.8
RATIO PER MILLION VEHICLE MILES TRAVELED	0.648	0.530	0.479	-18.2	-9.6
RAIL RAPID TRANSIT ACCIDENTS					
TOTAL	11	13	11	18.2	-15.4
FATALITIES	4	3	4	-25.0	33.3
INJURIES	7	69	113	885.7	63.8
RATIO PER MILLION RIDERS	0.009	0.010	0.008	11.1	-20.0
RATIO PER MILLION VEHICLE MILES TRAVELED	0.035	0.041	0.034	17.1	-17.1
SUBURBAN RAIL ACCIDENTS					
TOTAL	21	9	17	-57.1	88.9
FATALITIES	2	2	1	0.0	-50.0
INJURIES	6	3	8	-50.0	166.7
RATIO PER MILLION RIDERS	0.145	0.060	0.109	-58.6	81.7
RATIO PER MILLION VEHICLE MILES TRAVELED	0.203	0.086	0.161	-57.6	87.2

Source: New York State Department of Motor Vehicles
New York State Public Transportation Safety Board

INTRODUCTION

The New York Metropolitan Transportation Council (NYMTC) is an association of governments and transportation providers, which serves as the Metropolitan Planning Organization (MPO) for New York City, the Long Island counties of Nassau and Suffolk, and Putnam, Rockland and Westchester counties in the lower Hudson Valley. In its role as MPO, the Council is mandated to develop and regularly update a Regional Transportation Plan for its area. The current Plan was adopted in September, 1999. A downloadable version of the Plan can be obtained at the web site www.nymtc.org. The Plan identifies nine critical issue areas, as well as goals and objectives for addressing the issues. The Plan's issue areas include specific performance measures to monitor the progress toward achieving the relevant goals and objectives. The safety issue area requires an assessment of crashes on the roadway and transit portions of the transportation system, utilizing designated transportation plan safety performance measures and other indicators. The New York State Department of Motor Vehicles (DMV) provides motor vehicle, bicycle and pedestrian crashes data, and the New York State Public Transportation Safety Board (PTSBS) provides transit accident data for the 12 county downstate New York metropolitan area, which includes the 10 counties of the NYMTC region plus Dutchess and Orange counties in the Hudson Valley.

This Transportation Safety Report is a comprehensive publication of transportation crash statistics for the 12 county downstate metropolitan areas and is arranged in three sections:

Part One presents written analyses and comparisons of New York City, New York suburbs and the New York State crash data. An overview of fatalities and nonfatal injuries resulting from vehicular crashes is also included in this section of the report.

Part Two features charts depicting transportation safety data trends.

Part Three displays in tabular form the data from which the presentations in Parts One and Two were derived. These data are presented for the benefit of readers who may want to examine the basic data more closely.

THE NYMTC REGION



PART I

TRANSPORTATION
SAFETY
ANALYSIS and COMPARISONS



1 OVERVIEW

SAFETY ON THE HIGHWAY AND TRANSIT SYSTEMS

Transportation, by its nature, provides enhanced opportunities, but also risks, to those who travel. Safety for motor vehicle, bicycle, pedestrian, and transit travel is the primary concern for operators of transportation facilities. One of the Regional Transportation Plan's goals is to improve the safety and security of the highway and mass transportation systems and to minimize the risk of making trips in the New York metropolitan region. NYMTC is pleased to present the third edition of the Transportation Safety Report. This report assesses crash trends between 1990 and 2000 in the following counties: Dutchess, Nassau, Orange, Putnam, Rockland, Suffolk, Westchester, and the City of New York.

The graphs and tables presented in this report contain data on motor vehicle crashes and resulting injuries, fatality data on the road system by jurisdiction, and data on pedestrian fatalities. Table 1 presents total annual motor vehicle crashes for all major vehicle types: Passenger Car, Motorcycle, Bus, Taxi, School Bus, Emergency Vehicle, Truck, Tractor Trailer, Towing Vehicle, and Moped. Table A presents by county, the rankings of different types of motor vehicle crashes which occurred throughout the New York Metropolitan region in 2000. Table B is a Regional Recapitulation for many of the tables in this report. The Recapitulation shows the percent increase or decrease in these categories from 1998 to 1999 and from 1999 to 2000. This report also examines transit accident statistics on the subway, bus and commuter rail systems of the MTA from 1990 through 2000.

An examination of the graphs and tables will show that the number of motor vehicle crashes in the downstate, (New York City plus the suburbs), trended downward between 1990 and 1997, but then increased significantly between 1998 and 2000. These increases averaged 15.7 percent in 1999 over 1998 and a further 8.6 percent in 2000 over 1999. The largest increase, 22.6 percent, was experienced in the suburbs from 1997 to 1998, while New York City recorded a 23.2 percent increase in 1999 over 1998.

The MTA rail and bus divisions included in this report are:

- MTA New York City Transit Subway*
- MTA Staten Island Railway*
- MTA Metro-North Railroad*
- MTA Long Island Rail Road*
- MTA New York City Transit Bus*
- MTA Long Island Bus*

The MTA, which accounts for 97 percent of downstate New York transit ridership, has reported an average of 85 accidents per year throughout the 1998-2000 period. There has been an average of 12 fatalities and 460 injuries per year for this 3-year period. (See Table 43, page 78.)



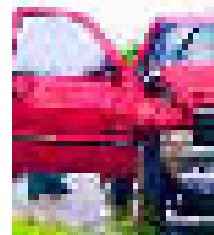
II MOTOR VEHICLE SAFETY

1. CRASHES RESULTING IN A FATALITY, INJURY OR PROPERTY DAMAGE

Motor vehicle crash data are classified in terms of severity and comprise the following categories: Fatal, Nonfatal Injury, and Property Damage (over \$1,000). During the time period 1998 – 2000, the following changes were observed:

A. Fatal Crashes

- There were 736 crashes resulting in a fatality in the downstate (New York City plus the suburbs) in 2000. This is a 4.2 percent decrease over the 768 fatalities reported in 1998. The number of fatal crashes in the New York suburbs fluctuated from 411 to 436 and 388 in 1998, 1999 and 2000, respectively. In New York City the number of fatal crashes went from 357 to 372 to 348 in 1998, 1999 and 2000 respectively. The fatality rate in the New York metropolitan region for motor vehicle crashes for 2000 was 6.05 per 100,000 population, lower than the 6.42 rate for 1998 and 7.0 in 1999 (Table 3, page 37 and Figure 3, page 16). It should be noted that the fatality rates were highest in the suburbs and lowest in the City. These rates had almost parallel patterns in the New York metropolitan region, New York City, New York suburbs and New York State during the 1998-2000 time period.



B. Injuries

- Vehicle crashes resulting in nonfatal injuries in New York City, the suburbs, the New York metropolitan region (New York plus the suburbs) and New York State were as follows:



Percent of Vehicle Crashes Resulting in Nonfatal Injuries

	1998	1999	2000
New York City	84.5%	69%	66.3%
New York Suburbs	50.9%	46.5%	43.7%
New York Metropolitan Region(Downstate)	67.4%	58.2%	55.4%
New York State	59.3%	51.2%	48.1%

There were over 83,000 vehicle crashes resulting in injury in New York City; over 135,000 in the New York metropolitan region; over 51,000 in the suburbs and over 188,000 in the State during 2000. (See Table 4, page 38 and Figure 4, page 16)

C. Property Damage

According to the New York State Department of Motor Vehicles, The Vehicle and Traffic Law was amended in April, 1997 to provide statutory authority for police officers to report accidents which, in their judgement, appear to meet the reporting criteria for property damage (i.e., damage in excess of \$1,000 to the property of any one individual). Now, accidents are classified as reportable when police check the box that indicates that it meets the criteria for reporting a property damage accident. As a result, reportable accidents that include a police report and involved only property damage have increased.

- Approximately 44.3 percent of the total number of crashes in the New York metropolitan region in 2000 resulted in property damage as opposed to 32.2 percent in 1998. In the New York metropolitan region there were over 45,000 more property damage crashes in 2000 than in 1998, an increase of 72.7 percent. A significant increase of 37.2 percent was noticed in the New York suburbs, while New York City experienced an even larger increase of 191.8 percent in property damage crashes in the same time period. (See Table 5, page 39 and Figure 5, page 17)

Percent of Vehicle Crashes Resulting in Property Damage

	1998	1999	2000
New York City	15.1%	30.7%	33.4%
New York Suburbs	48.7%	53.1%	55.9%
New York Metropolitan Region(Downstate)	32.2%	41.4%	44.3%
New York State	40.3%	48.4%	51.5%

2. CONTRIBUTING FACTORS: HUMAN, ENVIRONMENTAL AND VEHICULAR

- Vehicle crashes caused by human factors accounted for the following percent of crashes in New York City, the suburbs, the New York metropolitan region and New York State during the period 1998-2000:

Percent of Vehicle Crashes Caused by Human Factors

	1998	1999	2000
New York City	85.3%	93.3%	94.6%
New York Suburbs	86.9%	86.0%	86.8%
New York Metropolitan Region (Down state)	86.1%	89.8%	90.8%
New York State	86.5%	87.5%	87.8%

- In 2000, human factors contributed to 90.8 percent of all crashes in the New York metropolitan region. The number of crashes resulting from human factors rose from 167,083 in 1998 to 221,402 in 2000 (Table 6, page 40). Driver inattention, failure to yield right of way, following too closely, and unsafe speed accounted for 20.1, 14.9, 13.9, and 6.9 percent, respectively, of all crashes attributed to one of 20 human factors. (See Figure 7, page 18.) Table 6A, page 41 shows the impact of alcohol as a human factor in crashes in all twelve counties for the years 1999 and 2000. This table indicates that more alcohol related accidents, both as a percent of human factor crashes (3.4 percent vs. 1.2 percent) and as a percent of all crash factors (1.6 percent vs. 0.6 percent), occurred in the suburbs than in New York City. The figures reflect an upward trend for New York City and the suburbs.
- Another significant contributor associated with vehicle crashes is the environmental factor or roadway condition. Roadway conditions contributed to 14.5 percent of total crashes in the New York metropolitan region in 2000. Slippery pavements and animals' actions accounted for 58.0 and 15.9 percent, respectively, of all crashes attributed to environmental factors. The analysis further shows that the crashes attributed to environmental factors in the New York suburbs are almost twice as great when compared to crashes within New York City in 2000 (65.5 percent vs. 34.5 percent). (See Table 8, page 43 and Figure 10, page 19)
- The third highest contributing factor was vehicular conditions, which were



responsible for over 4.2 percent of the total crashes in 2000. This factor includes conditions such as defective brakes, tire failure and steering failure. In 2000, vehicular factors were responsible for twice as many crashes in New York City as in the suburban counties. The number of crashes attributed to this factor increased 22 percent in New York City from 1998 to 1999 but decreased 3 percent from 1999 to 2000. In the suburbs this number increased 4.5 percent from 1998 to 1999 and 9.5 percent from 1999 to 2000. Defective brakes, tire failure, and oversized vehicle accounted for 15.9, 7.1 and 5.6 percent, respectively, of all vehicular crashes attributed to a vehicular factor in 2000. (See Table 7, page 42, Figure 8, page 18 and Figure 9, page 19)

3. CRASHES BETWEEN PEOPLE AND VEHICLES

This section offers statistics about the gender and age of the drivers, pedestrians and bicyclists involved in motor vehicle crashes.

A. Crashes Involving Male And Female Drivers And Their Age

According to the summary of motor vehicle crashes compiled by New York State Department of Motor Vehicles, during the 1998 - 2000 time frame, there were 758,073 and 370,887 crashes involving male and female drivers, respectively, in the New York metropolitan region. Many more crashes involving female drivers occurred in the New York suburbs (62.6 percent) than in New York City. In contrast, crashes involving male drivers happened more often in the City (56.0 percent) than in the suburbs. This trend has been observed since 1990, in both the suburbs and New York City (see Tables 13-14, pages 48-49).

In New York City, in 2000, male drivers made up 58 percent of the registered drivers but accounted for 75.4 percent of the accidents. In the suburbs male drivers comprised 50.7 percent of the registered drivers, but accounted for 59.2 percent of the accidents. This would seem to imply that male drivers have more vehicle crashes as a percent of the driving population in the city than in the suburbs.

In New York City, in 2000, female drivers comprised 42 percent of the registered drivers, but accounted for 24.6 percent of motor vehicle crashes. Female drivers comprised 49.3 percent of the registered drivers in the suburbs, but accounted for 40.8 percent of motor crashes.

In 2000, people aged 60 and older in the New York metropolitan region were involved in 8.4, 12.6 and 10.5 percent of the accidents in New York City, the suburbs and the New York metropolitan region, respectively. Male drivers in all age categories had more accidents than female drivers and in most age groups, twice as many accidents as female drivers (Figure 24, page 26). The age group with the highest percent of accidents was 30-59 for both male and female drivers. Male and female drivers, 30-39 years old had the highest absolute number of vehicle crashes in 1998, 1999 and 2000 (See below).

Accidents for Age Group 30-39

	Male			Female		
	1998	1999	2000	1998	1999	2000
New York City	33,908	41,653	44,179	11,157	13,609	14,518
New York Suburbs	23,557	25,144	26,932	16,995	17,726	18,994
New York State	79,202	91,993	97,883	44,205	49,498	52,999

B. Vehicular/Pedestrian Crashes At Intersections And Mid-Block Locations

In 2000, 259 pedestrians were killed in over 15,000 vehicular/pedestrian crashes in the New York metropolitan region, representing 35.2 percent of all traffic fatalities in the region. Although 6.2 percent of the total traffic crashes in the New York metropolitan region were pedestrian crashes, they were more likely to result in serious injury or death. The majority of pedestrian crashes occurred in New York City, accounting for greater than 82 percent of all vehicular pedestrian crashes in the New York metropolitan region. The number of pedestrian crashes which occurred at an intersection was much higher than that of pedestrian accidents which occurred mid-block in the New York metropolitan region. This was particularly evident in New York City, where 65.3 percent of all vehicle/pedestrian crashes occurred at an intersection. The number of vehicle/pedestrian crashes at suburban intersections and mid-block locations



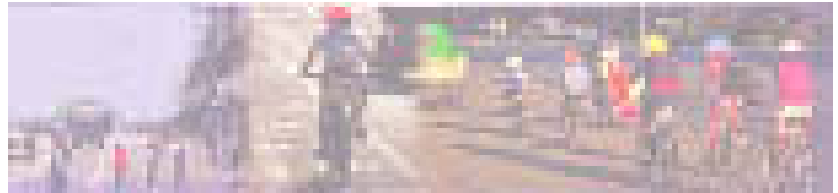
became relatively even and in 2000 accounted for 18 percent of regional vehicle/pedestrian crashes. There were 180 pedestrian fatalities in New York City and 79 in the suburbs in 2000. The number of pedestrian fatalities remained constant in New York City from 1998 to 2000 (181 vs. 180) but decreased by 22.5% in the suburbs (102 vs. 79) (see Figure 27, page 28 and Table 20, page 55).



C. Motor Vehicle/Bicycle Crashes

For some people in New York City and the suburban counties, bicycling is a viable transportation option, but for others hesitancy is due to the safety issue. Bicycling with automobile traffic can be dangerous. Despite the relatively small numbers of bicyclists however, many serious bicycle-related injuries do occur in the New York metropolitan region each year.

The 35 bicyclists deaths in 1999 and the 26 in 2000 accounted for 4.3 percent and 3.5 percent of all traffic fatalities in the New York metropolitan region, respectively (Table 22, page 57). Bicyclist fatalities occurred more frequently in New York City than in the suburbs during the time period 1998-2000 (60 vs. 35). Almost 18,000 bicyclists were killed or injured in bicyclist vehicle crashes during the period 1998-2000. The number of bicyclist deaths declined from 36 in 1998 to 26 in 2000. (See Tables 21-22, pages 56-57 and Figures 28-29, pages 28-29)



4. CRASHES ON ROAD SYSTEM BY ROADWAY JURISDICTION

Tables 23 to 39, pages 58-74, show crashes on the region's road system by jurisdiction and by county for the years 1991 through 2000. The following analysis by road type is based on data from 2000:

State Routes

One hundred forty-five (145) fatal crashes out of over 36,700 crashes occurred on state routes in the New York suburbs in 2000. Only one fatality out of 389 crashes took place in New York City on state roads.

County Routes

In 2000, sixty-six fatal crashes out of almost 12,800 crashes occurred on county routes in the suburbs. During 2000, there were almost 5,900 crashes on county routes in the suburbs that involved personal injury.

Town Routes

Eighty-five fatal crashes out of over 31,600 crashes occurred on town routes in the suburbs in 2000. This represents a decrease over the 93 fatal accidents in 1999 and the 99 fatal accidents in 1998.

Municipal Streets

Two hundred eighty (out of over 106,000 crashes) and 32 (out of over 20,000 crashes) fatal crashes occurred in New York City and its suburbs, respectively, on municipally-owned streets.



Parkways

Over 8,400 vehicle crashes occurred on parkways in New York City in 2000. This number includes 37 fatal crashes. In the New York suburbs, 31 fatal crashes out of over 9,400 crashes occurred on parkways.

Thruway

This roadway had the lowest number of vehicle crashes (2,370) in the New York metropolitan region in 2000. There were 10 fatalities and 823 property damage accidents on the thruway system during 2000.

Other Interstate (Expressways)

There were almost 10,300 vehicle crashes on other interstates in New York City and over 4,300 in the suburbs. Of these, 30 fatal crashes occurred in New York City and 19 fatal crashes in the New York suburbs.

Over 62 percent of all vehicle crashes reported in New York State in 2000 occurred in the New York metropolitan region. This was similar to the 63.5 percent in 1998 (Table 39, page 74). Figures 30 to 33, pages 29-31, show vehicle crashes on various road types in New York City, New York suburbs, New York metropolitan region, and New York State.

5. CRASHES BY VEHICLE

The total number of vehicles involved in crashes varies annually, similar to the number of crashes in the 1998 - 2000 time period. The peak number of vehicles involved in crashes was 246,093 in New York City and 469,497 in the New York metropolitan region in 2000. The New York suburban data indicate that the highest number (223,410) of vehicles involved in crashes was in 2000. Between 1998 and 2000 the number of vehicles involved in crashes has risen in New York City, the suburbs and New York State. In 2000 there was an average of 1.9 vehicles per crash in the New York metropolitan region.

A. Vehicles Involved In Crashes Resulting In Fatalities

- The trend of the number of vehicles involved in crashes resulting in a fatality from 1990 to 2000 was a steady downward slope. From 1990 to 2000 the number of vehicles involved in a fatal crash declined by 45.4 percent in New York City, 24.2 percent in the suburbs, and 35.4 percent in the metropolitan area. (See Table 10, page 45.)
- The average number of vehicles involved in crashes per year during 1990-2000 was 667 for the City and 704 for the suburban counties.

B. Vehicles Involved In Crashes Resulting In Injury

- Parallel to the increase of the number of crashes resulting in an injury, the number of vehicles involved in injury crashes rose from 260,602 in 1990 to 259,439 in 2000 in the New York metropolitan region. (See Table 11, page 46.)
- Data indicate that the number of vehicles involved in injury crashes from 1990 to 2000 were the highest in 1991 followed by 1990.

C. Vehicles Involved In Crashes Resulting In Property Damage

- The total number of vehicles involved in crashes resulting in property damage increased significantly from 1998 to 2000 in the New York metropolitan region (120,850 vs. 208,892) (Table 12, page 47). The largest percent change



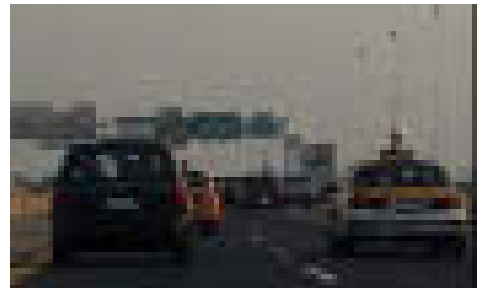
occurred in New York City, where the numbers rose from 29,644 to 85,766. The number of vehicles involved in crashes resulting in property damage during this same time period in New York City increased from 13.4 to 23.9 percent of all the number of vehicles involved in crashes resulting in property damage in New York State.

- There were 85,766 vehicles involved in property damage crashes in New York City in 2000. This was an increase from 29,644 in 1998 or 189 percent. Over 123,000 vehicles were involved in property damage crashes in the New York suburbs in 2000. This number represents an increase of 35 percent over 1998.

According to the New York State Department of Motor Vehicles, The Vehicle and Traffic Law was amended in April, 1997 to provide statutory authority for police officers to report accidents which, in their judgement, appears to meet the reporting criteria for property damage (i.e., damage in excess of \$1,000 to the property of any one individual). Now, accidents are classified as reportable accidents when police check the box that indicates that it meets the criteria for reporting a property damage accident. As a result, reportable accidents that include a police report and involved only property damage have increased.

6. CRASHES BY MANNER OF TWO VEHICLE COLLISIONS

Table 40, page 75 contains data on the manner of two vehicle collisions. The data shows that the majority of accidents in New York City, the suburbs and New York State are rear-end accidents, followed by right angle accidents. In New York State, the suburbs and New York City, the percent of rear-end accidents in 2000 were 34.2, 36.8, and 32.2, respectively. These appear to be consistent with 1999's occurrences (34.2, 36.6 and 32.8 percent respectively).



7. CRASHES BY DAY OF WEEK

Table 41, page 76 contains data on the number of accidents for New York City, the suburbs and New York State by the day of the week they occurred. Based on the data, more accidents occur on Friday in New York City, the suburbs and New York State. The day of the week with the fewest accidents across all areas is Monday.

III TRANSIT SAFETY

New Yorkers are heavily dependent on public transportation. According to data available from the American Public Transportation Association, in 1998, more than 45 percent of all transit trips in the 30 largest metropolitan areas of the United States were made in the New York-Northeastern New Jersey region, while in 1999 it was 43 percent. In terms of total number of accidents on all modes of the transportation system, accidents on the transit system are fewer than motor vehicle accidents on the highway system. However, transit passenger safety remains an important concern. Although there are other independent transit operators in the region, the transit accident data in this report cover the largest group of transit properties in the New York metropolitan region, the Metropolitan Transportation Authority (MTA). Statistics describing transit accidents have been derived from the New York State Public Transportation Safety Board. Table 44, Table 45, pages 79-80, present transit accident ratios per million riders, and per million vehicle miles traveled, while Table 43 shows the total number of accidents in the MTA portion of the region in the 1990-2000 time period. (See also Figure 34, page 31.)

1. RAIL ACCIDENTS

This report includes accident data for the following transit operators: MTA Long Island Rail Road (LIRR), MTA New York City Transit (Subway and Bus) and MTA Metro-North Railroad (MNR).

- In 2000, MTA Long Island Rail Road (transporting 84.7 million passengers) experienced the highest number of total accidents(13)



of the rail operators. The accident ratios per million riders and per million vehicle miles traveled were 0.153 and 0.228 in 2000. (See Tables 44-45, pages 79-80.)

- There were 61 passenger fatalities on the New York City Subway system in the period 1990-2000. The peak year was 1990, in terms of the total number of accidents, but the highest number of fatalities occurred in 1991. (See Table 43, page 78) In terms of the accident ratio per million riders and per million vehicle miles traveled, the New York City Subway is the safest transit system in the region. (See Tables 45, page 80.)
- From 1990 to 2000 there were 45 accidents, two fatalities and 34 injuries on the Metro-North Railroad.
- The data in Table 43 reveal that the Staten Island Railway had the lowest number of accidents of all the MTA properties. Very few (10) accidents happened on this line during the period 1990-2000. There were no passenger fatalities or injuries on this line during the same period.



2. BUS ACCIDENTS

Table 43, page 78 shows data on bus accidents and fatalities for the New York City Transit and the Long Island Bus.

- MTA New York City Bus system transported 699 million passengers in 2000. In the same year, 47 passenger accidents occurred on the NYC bus system. As Tables 44 and 45 display, the accident ratios per million riders and per million vehicle miles traveled were lower for the New York City Transit Bus (0.067 and 0.475) than for the Long Island Bus operation (0.201 and 0.508), respectively in 2000. The average fatalities for the New York City Transit Bus and Long Island Bus for the time period 1990-2000 were almost 6 and 0.5 per year.
 - In 2000, Long Island Bus, with an annual ridership of 30 million, had six accidents. These resulted in three fatalities and 15 injuries. The three fatalities represent the highest fatality rate in the last 11 years and the first fatality in the last five years.



PART II
TRANSPORTATION
SAFETY
DATA GRAPHS

INDEX OF FIGURES

Figure	Figure Name	Related Table
Figure 1	Total Number of Motor Vehicle Crashes 1990-2000	1
Figure 2	Motor Vehicle Crashes Resulting in Fatality 1990-2000	2
Figure 3	Motor Vehicle Fatality Rate Per 100,000 Population 1990-2000	3
Figure 4	Motor Vehicle Crashes Resulting in Injury 1990-2000	4
Figure 5	Motor Vehicle Crashes Resulting in Property Damage 1990-2000	5
Figure 6	Motor Vehicle Crashes By Contributing Human Factors 1990-2000	6
Figure 7	2000 Motor Vehicle Crashes By Contributing Human Factors – NY Metropolitan Region	6
Figure 8	Motor Vehicle Crashes By Contributing Vehicular Factors 1990-2000	7
Figure 9	2000 Motor Vehicle Crashes By Contributing Vehicular Factors – NY Metropolitan Region	7
Figure 10	Motor Vehicle Crashes by Contributing Environmental Factors 1990-2000	8
Figure 11	2000 Motor Vehicle Crashes by Contributing Environmental Factors - NY Metropolitan Region	8
Figure 12	Total Number of Vehicles Involved In All Type of Crashes 1990-2000	9
Figure 13	Total Number of Vehicles Involved in Crashes Resulting in Fatality 1990-2000	10
Figure 14	Total Number of Vehicles Involved in Crashes Resulting in Injury 1990-2000	11
Figure 15	Total Number of Vehicles Involved in Crashes Resulting in Property Damage 1990-2000	12
Figure 16	Motor Vehicle Crashes Involving Male Drivers 1990-2000	13
Figure 17	Motor Vehicle Crashes Involving Female Drivers 1990-2000	14
Figure 18	1990 Motor Vehicle Crashes by Age of Female Driver	15
Figure 19	1990 Motor Vehicle Crashes by Age of Male Driver	15
Figure 20	1999 Motor Vehicle Crashes by Age of Female Driver	16
Figure 21	1999 Motor Vehicle Crashes by Age of Male Driver	16
Figure 22	2000 Motor Vehicle Crashes by Age of Female Driver	17
Figure 23	2000 Motor Vehicle Crashes by Age of Male Driver	17
Figure 24	2000 Motor Vehicle Crashes by Age and Gender of Driver – NY Metropolitan Region	17
Figure 25	Vehicular/Pedestrian Crashes at Intersection 1990-2000	18
Figure 26	Vehicular/Pedestrian Crashes Not At Intersection (Mid-Block) 1990-2000	19
Figure 27	Total Pedestrian Fatalities in Vehicular/Pedestrian Crashes 1990-2000	20
Figure 28	Total Bicyclists Killed or Injured 1990-2000	21
Figure 29	Total Bicyclist Fatalities in Vehicular/Bicycle Crashes 1990-2000	22
Figure 30	Crashes on Road System By Jurisdiction – New York City 1991-2000	28
Figure 31	Crashes on Road System By Jurisdiction – New York Suburbs 1991-2000	36
Figure 32	Crashes on Road System By Jurisdiction – Downstate New York 1991-2000	37
Figure 33	Crashes on Road System by Jurisdiction – New York State 1991-2000	38
Figure 34	Transit Accidents MTA	43

FIGURE 1
TOTAL NUMBER OF MOTOR VEHICLE CRASHES
1990-2000

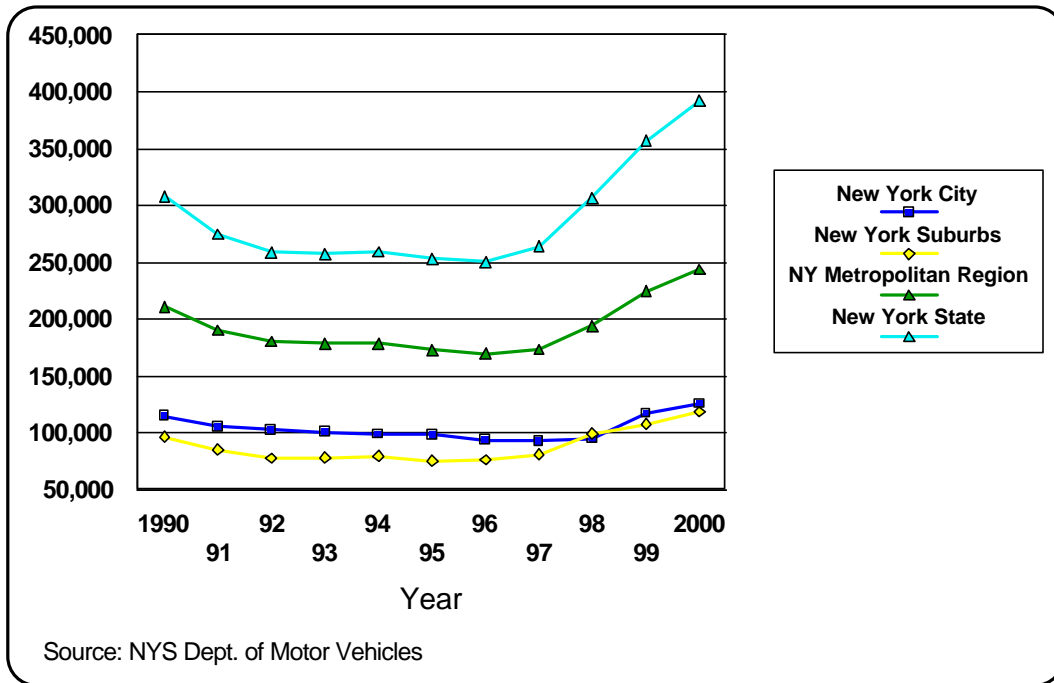
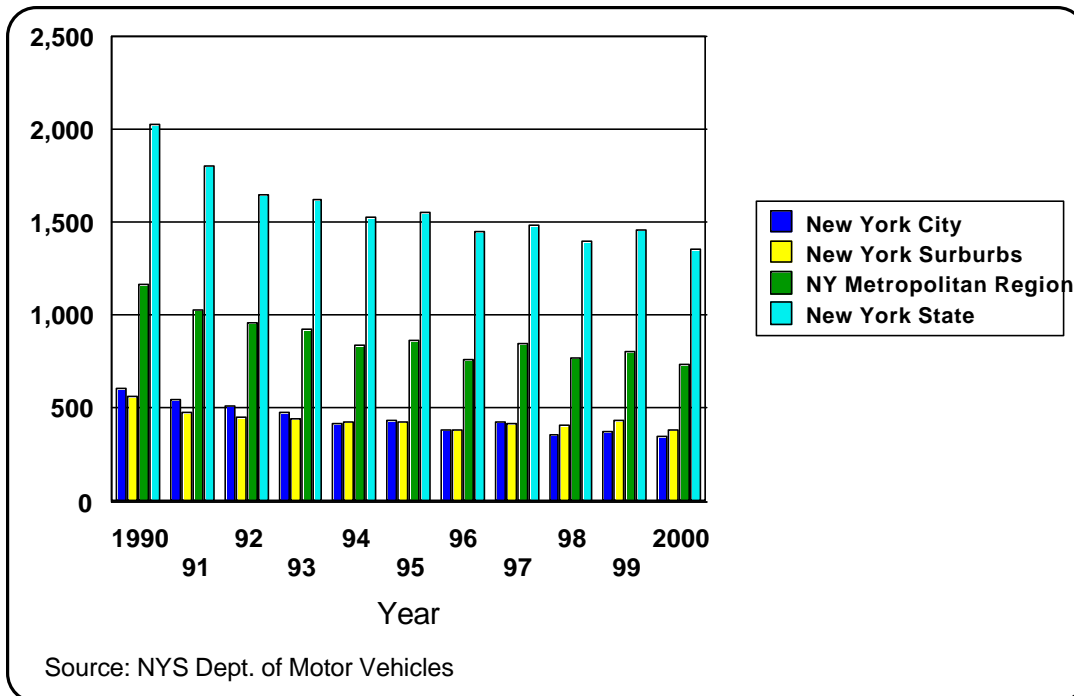
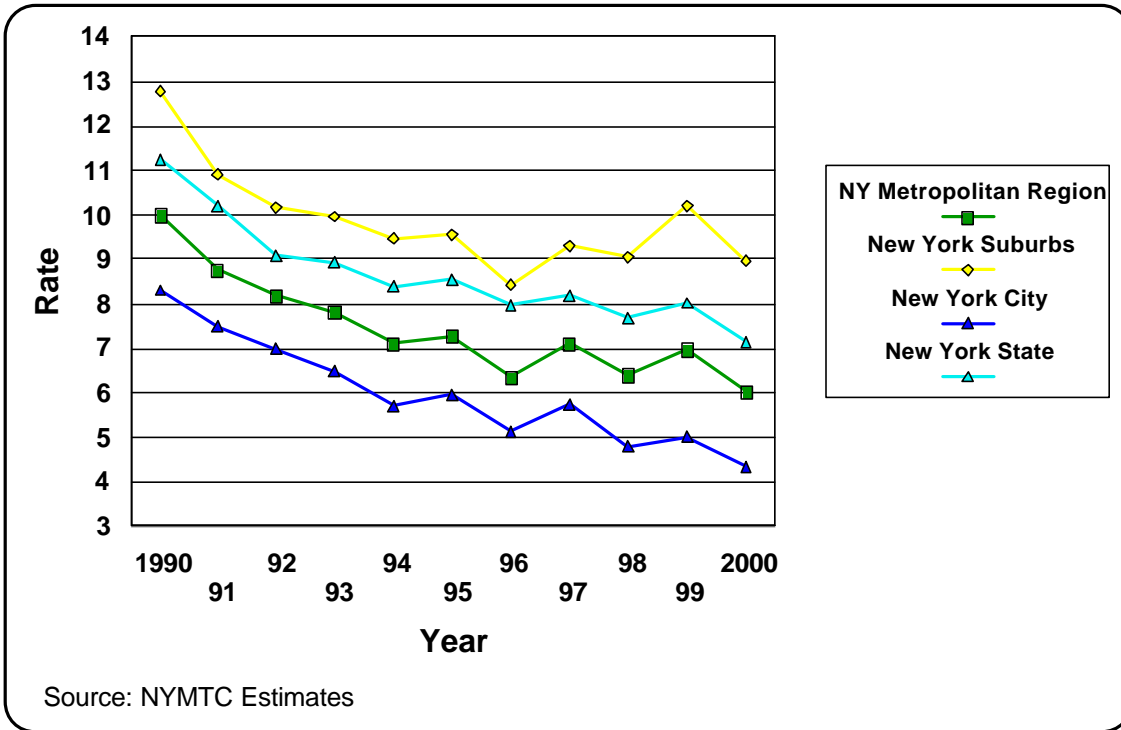


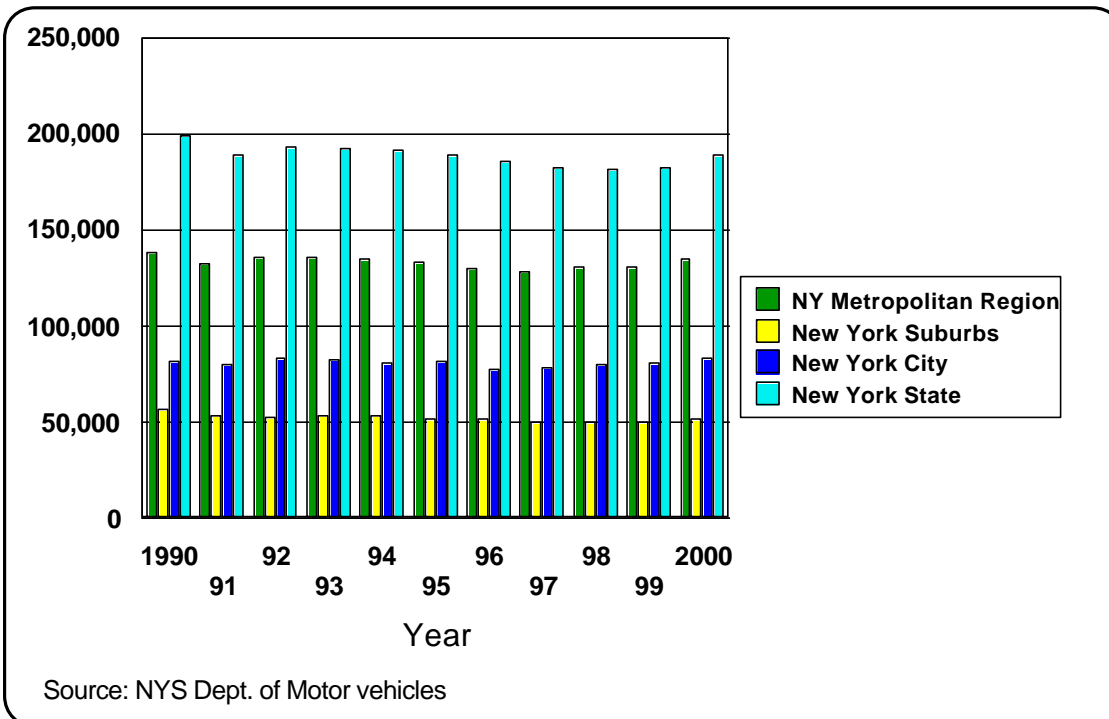
FIGURE 2
MOTOR VEHICLE CRASHES
RESULTING IN FATALITY
1990-2000



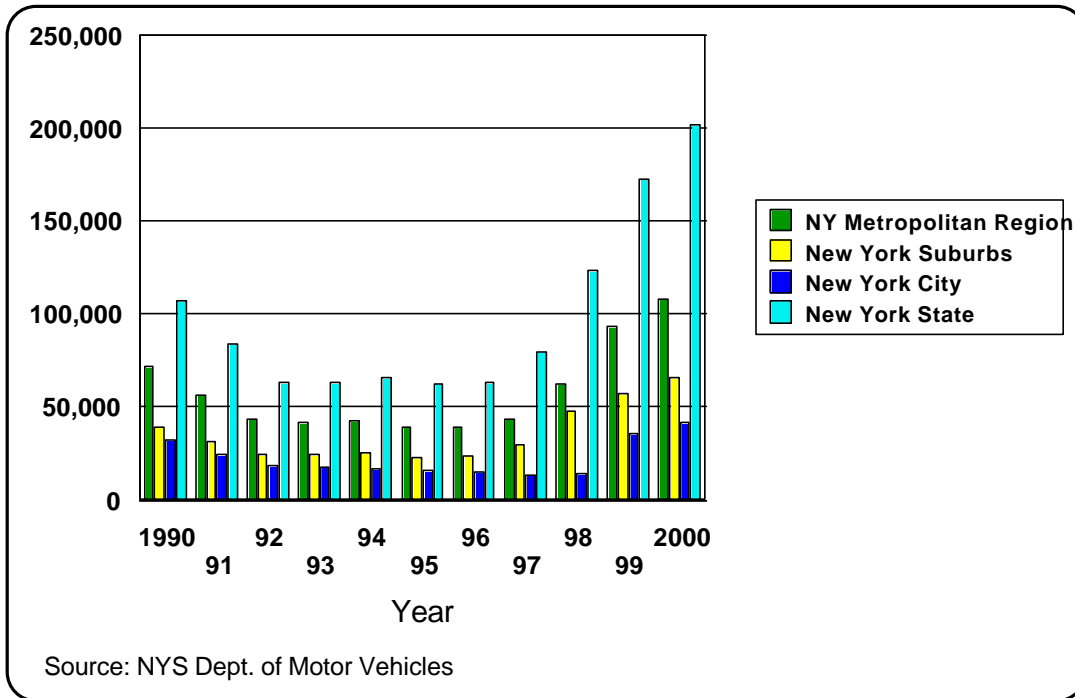
**FIGURE 3
FATALITY RATE OF MOTOR VEHICLE CRASHES
PER 100,000 POPULATION
1990-2000**



**FIGURE 4
MOTOR VEHICLE CRASHES RESULTING IN INJURY
1990-2000**



**FIGURE 5
MOTOR VEHICLE CRASHES
RESULTING IN PROPERTY DAMAGE
1990-2000**



**FIGURE 6
MOTOR VEHICLE CRASHES
BY CONTRIBUTING HUMAN FACTORS
1990-2000**

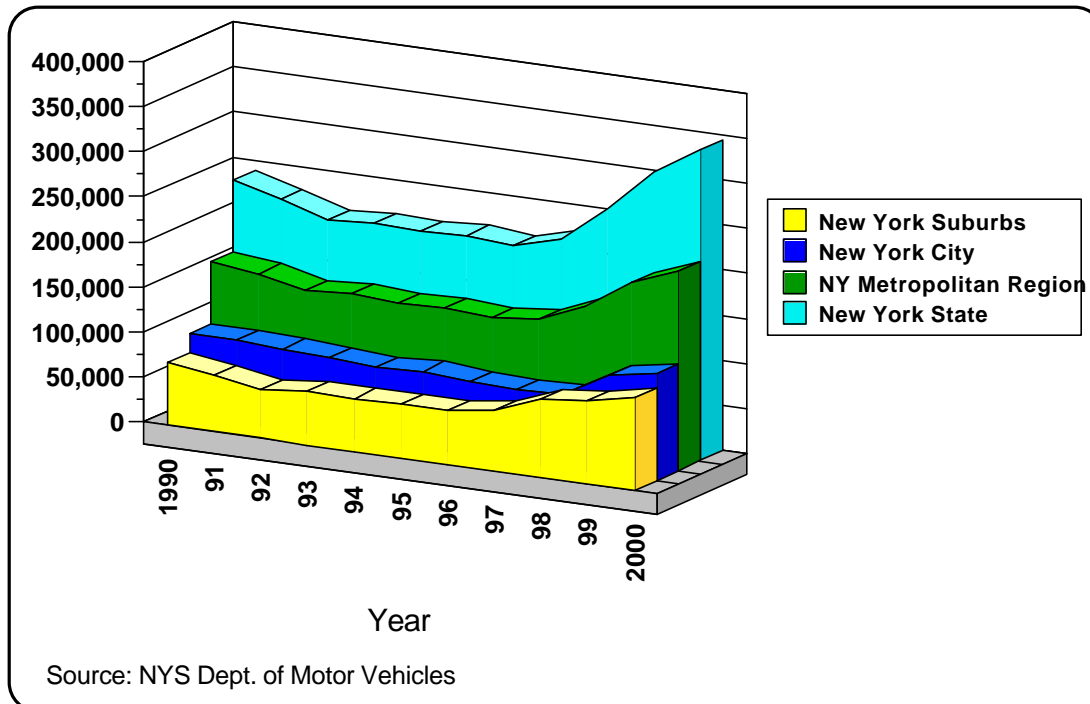


FIGURE 7
MOTOR VEHICLE CRASHES
BY CONTRIBUTING HUMAN FACTORS
NEW YORK METROPOLITAN REGION
2000

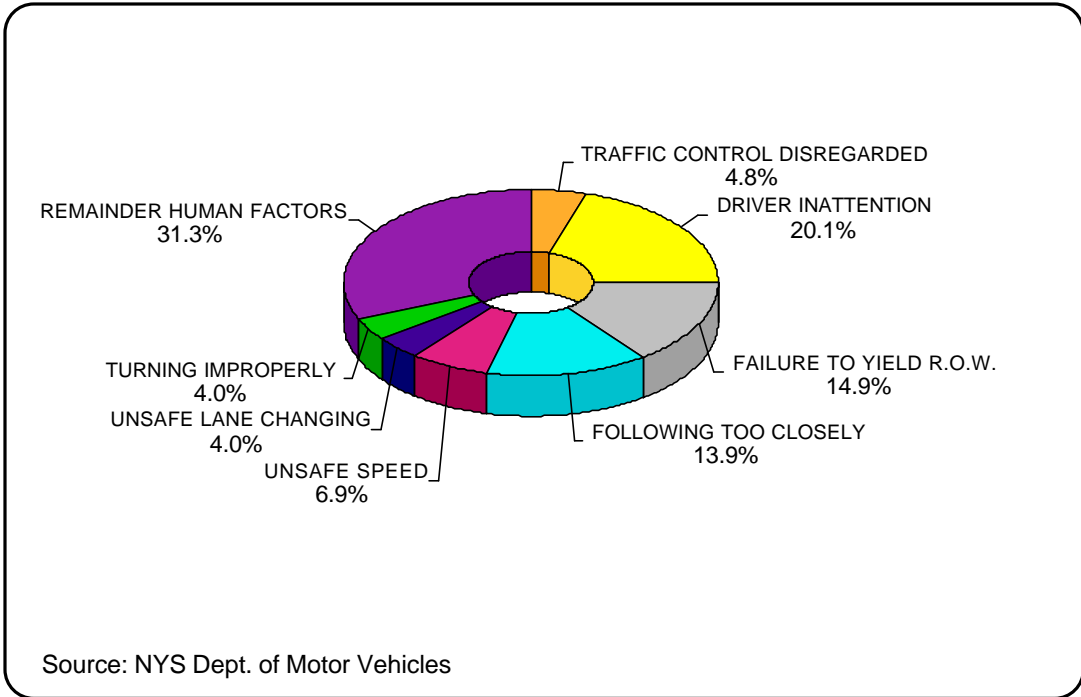


FIGURE 8
MOTOR VEHICLE CRASHES
BY CONTRIBUTING VEHICULAR FACTORS
1990-2000

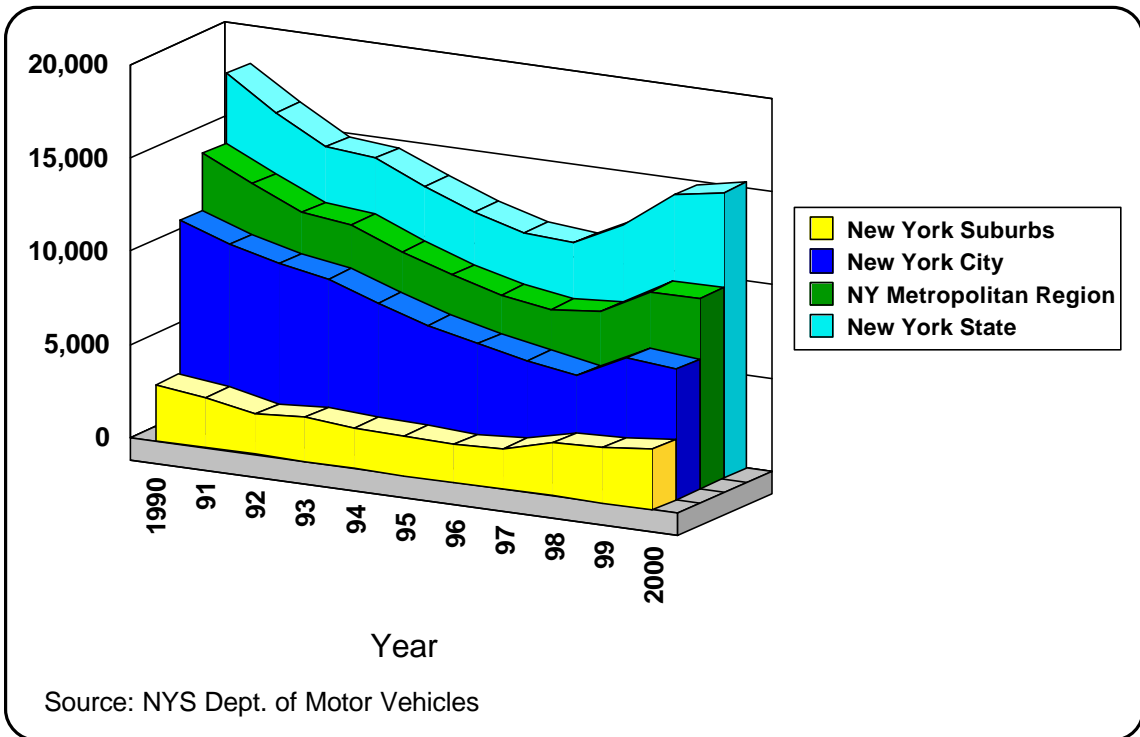
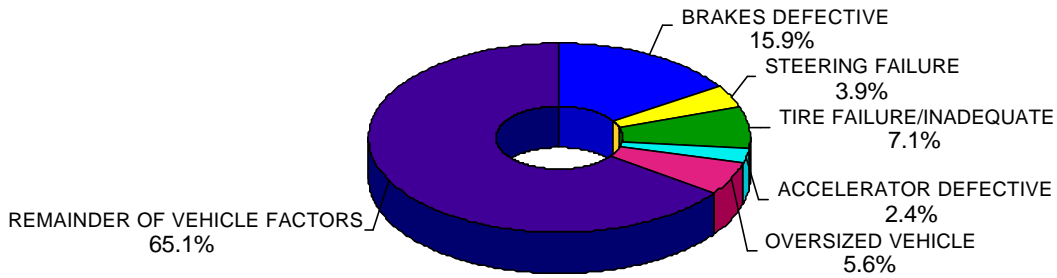
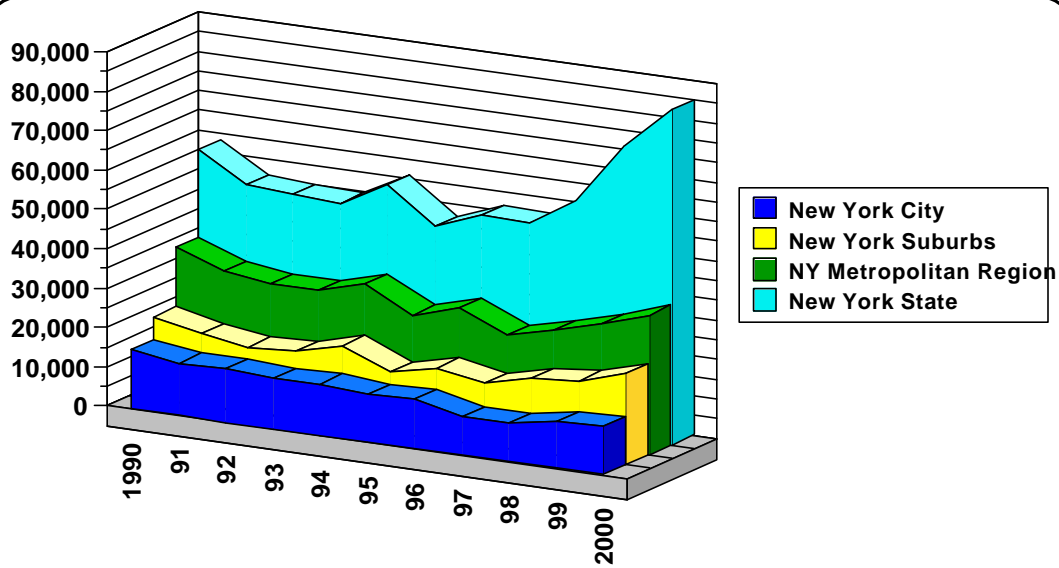


FIGURE 9
MOTOR VEHICLE CRASHES
BY CONTRIBUTING VEHICULAR FACTORS
NEW YORK METROPOLITAN REGION
2000



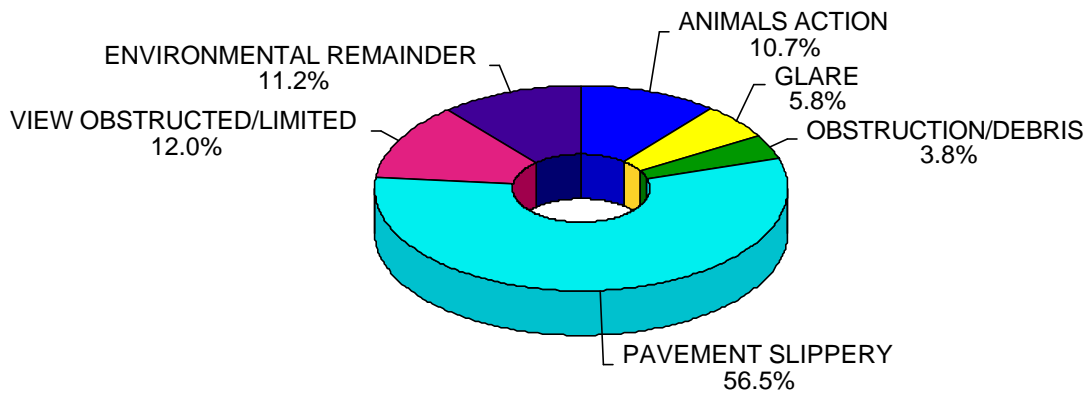
Source: NYS Dept. of Motor Vehicles

FIGURE 10
MOTOR VEHICLE CRASHES
BY CONTRIBUTING ENVIRONMENTAL FACTORS
1990-2000



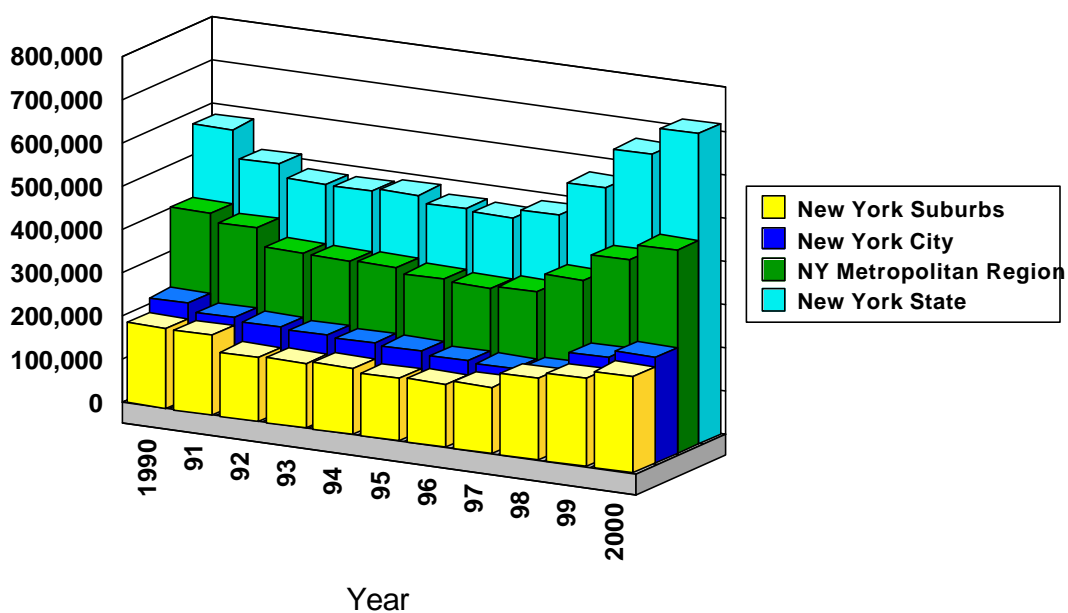
Source: NYS Dept. of Motor Vehicles

FIGURE 11
MOTOR VEHICLE CRASHES
BY CONTRIBUTING ENVIRONMENTAL FACTORS
NEW YORK METROPOLITAN REGION
2000



Source: NYS Dept. of Motor Vehicles

FIGURE 12
TOTAL NUMBER OF VEHICLES
INVOLVED IN ALL TYPE OF CRASHES
1990-2000



Source: NYS Dept. of Motor Vehicles

FIGURE 13
TOTAL NUMBER OF VEHICLES
INVOLVED IN CRASHES RESULTING IN FATALITY
1990-2000

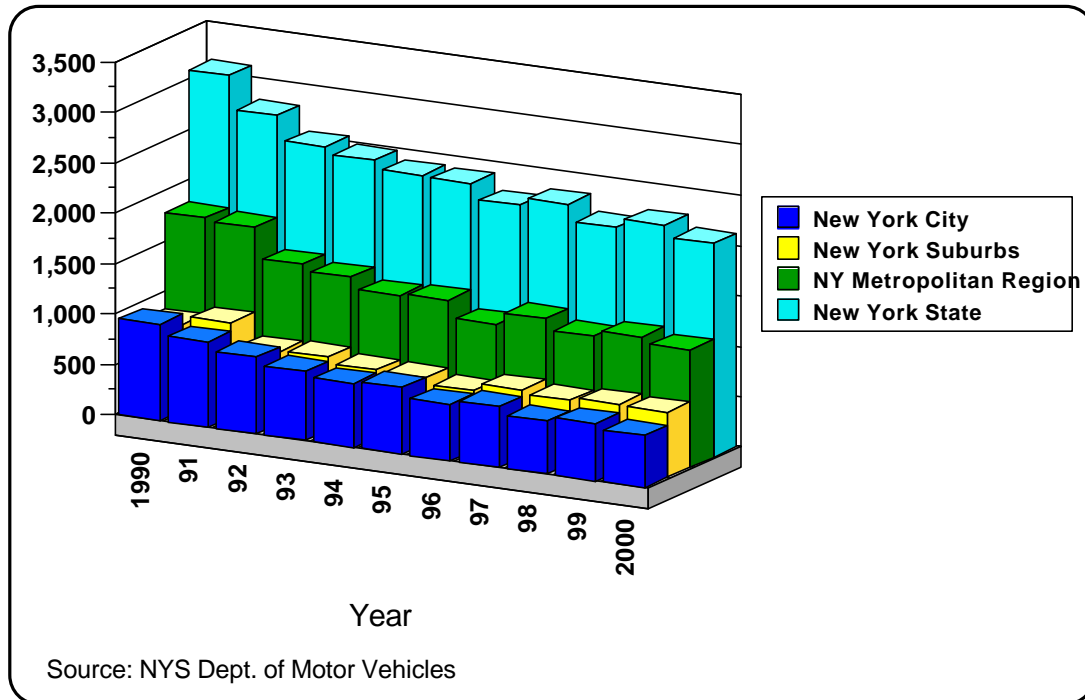


FIGURE 14
TOTAL NUMBER OF VEHICLES
INVOLVED IN CRASHES RESULTING IN INJURY
1990-2000

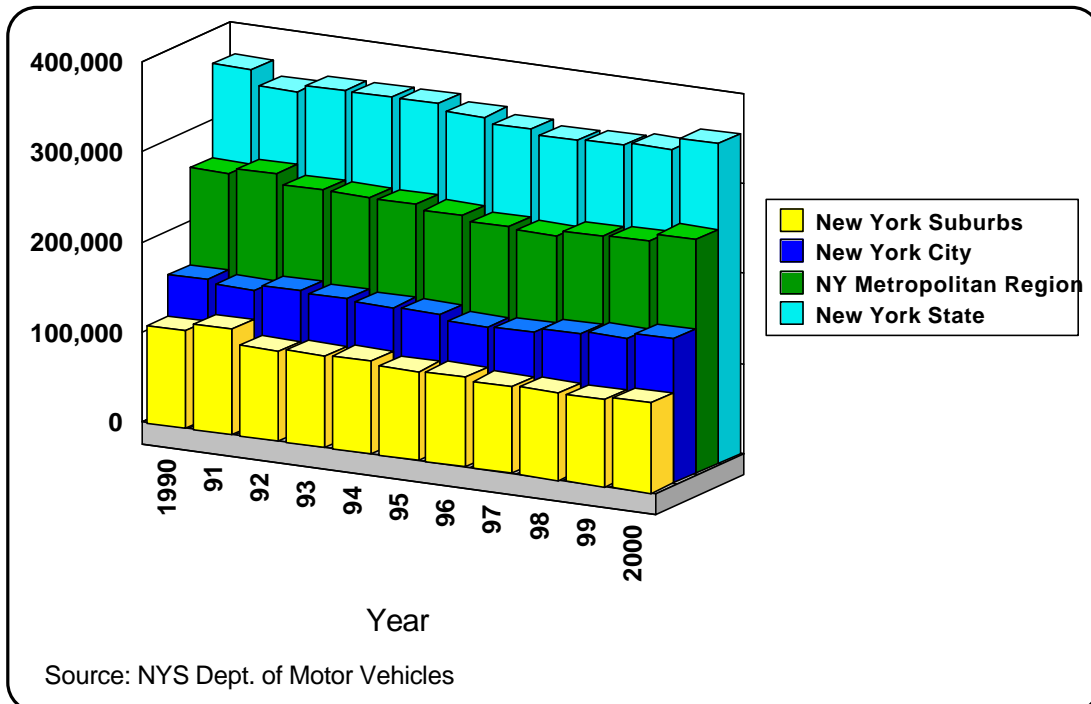


FIGURE 15
TOTAL NUMBER OF VEHICLES
INVOLVED IN CRASHES RESULTING IN PROPERTY DAMAGE
1990-2000

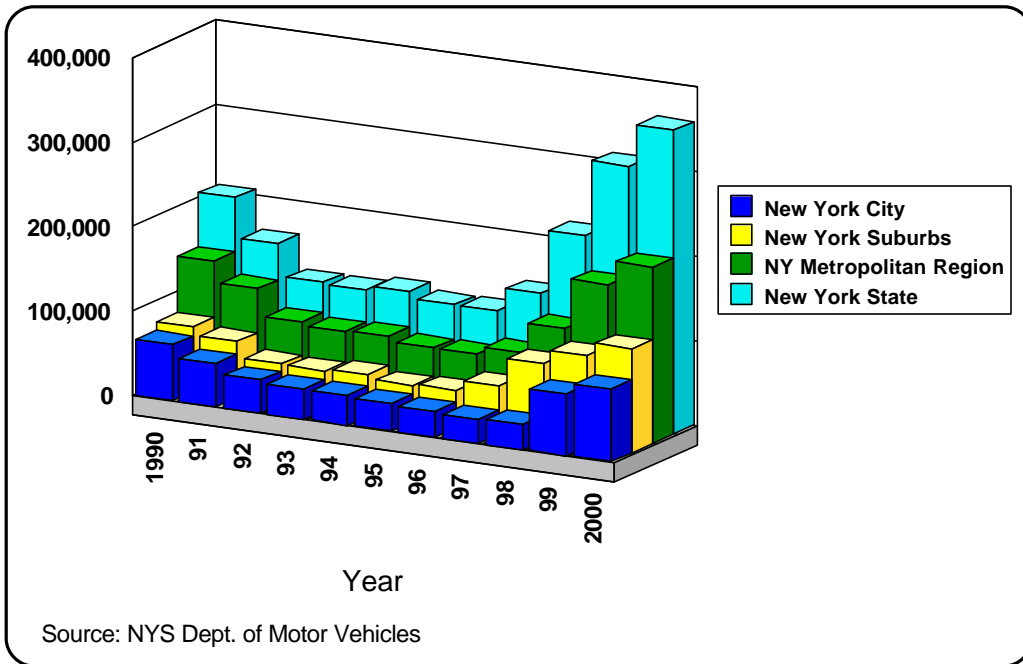


FIGURE 16
MOTOR VEHICLE CRASHES
INVOLVING MALE DRIVERS
1990-2000

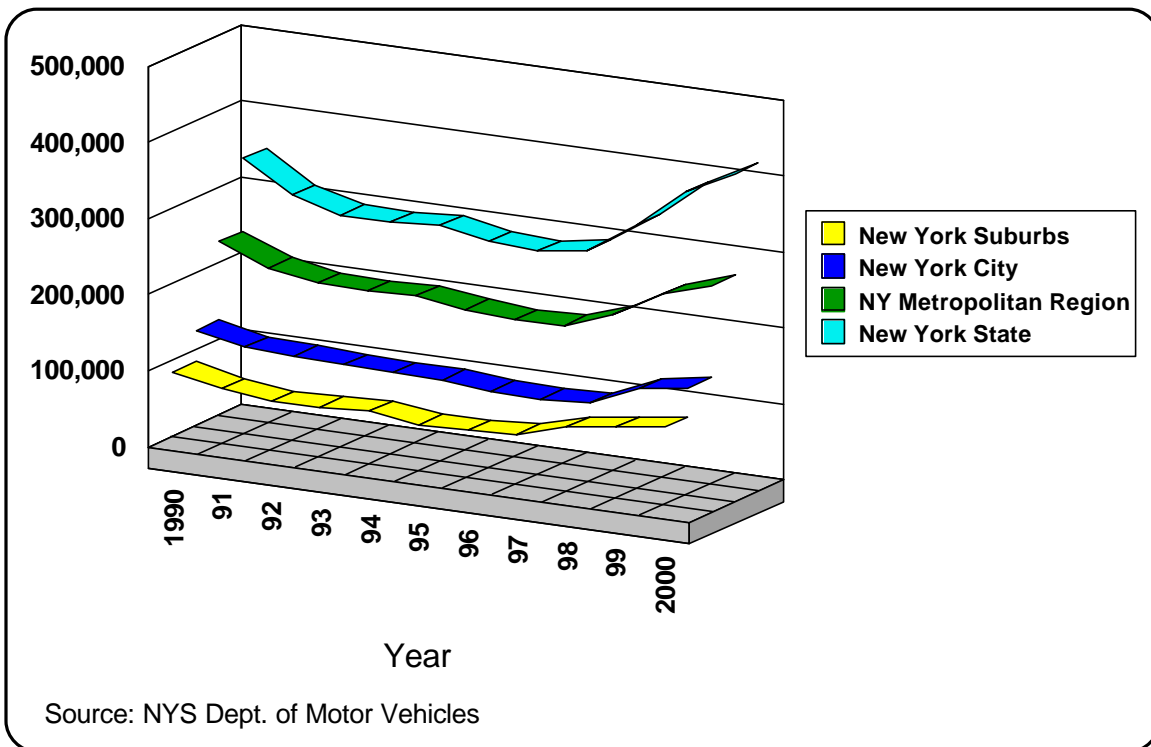


FIGURE 17
MOTOR VEHICLE CRASHES
INVOLVING FEMALE DRIVERS
1990-2000

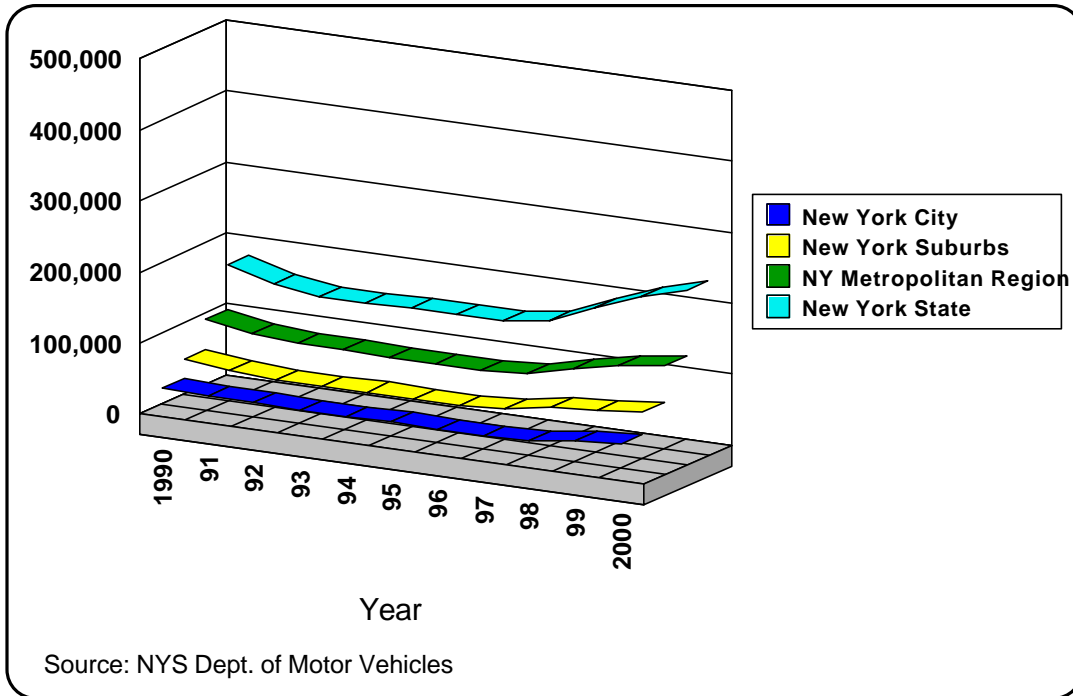


FIGURE 18
PERCENT OF MOTOR VEHICLE CRASHES
BY AGE OF FEMALE DRIVER
1990

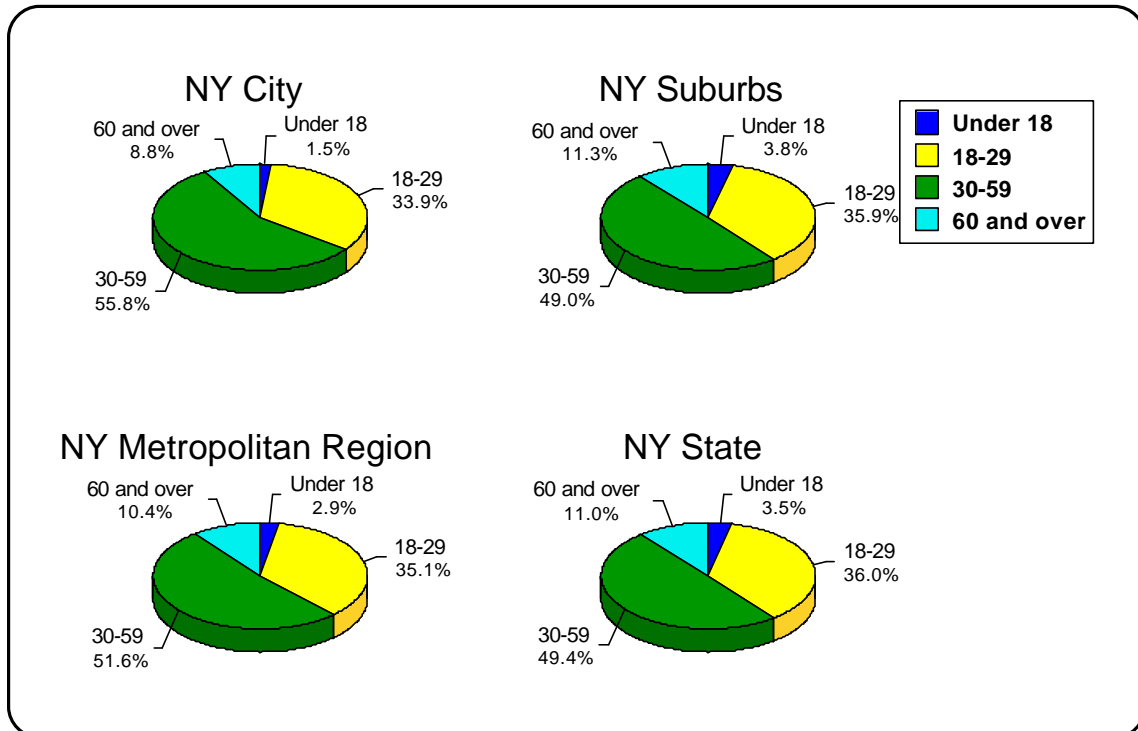


FIGURE 19
PERCENT OF MOTOR VEHICLE CRASHES
BY AGE OF MALE DRIVER
1990

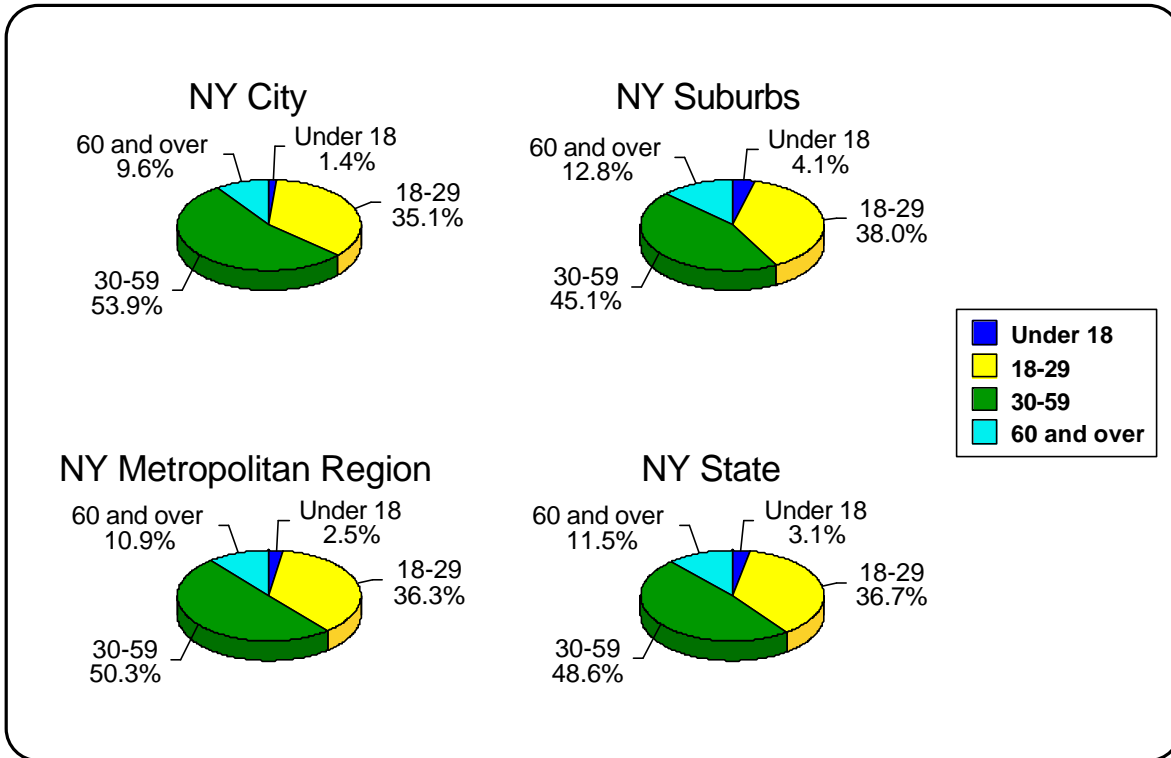


FIGURE 20
PERCENT OF MOTOR VEHICLE CRASHES
BY AGE OF FEMALE DRIVER
1999

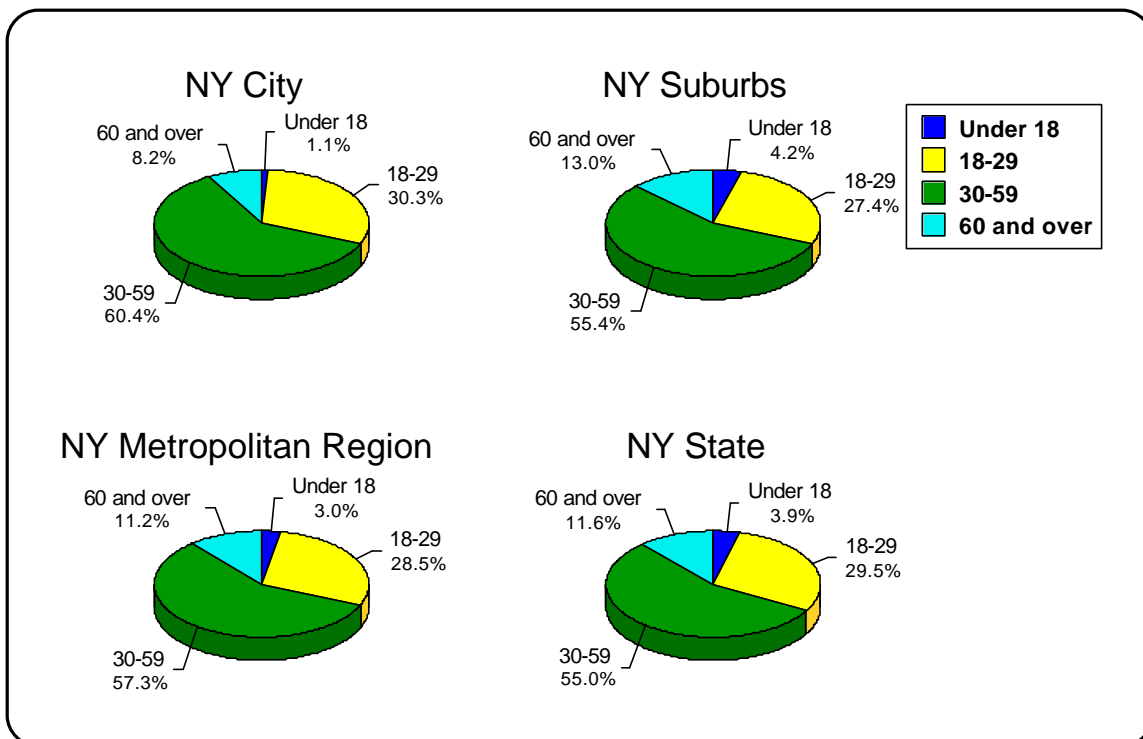


FIGURE 21
PERCENT OF MOTOR VEHICLE CRASHES
BY AGE OF MALE DRIVER
1999

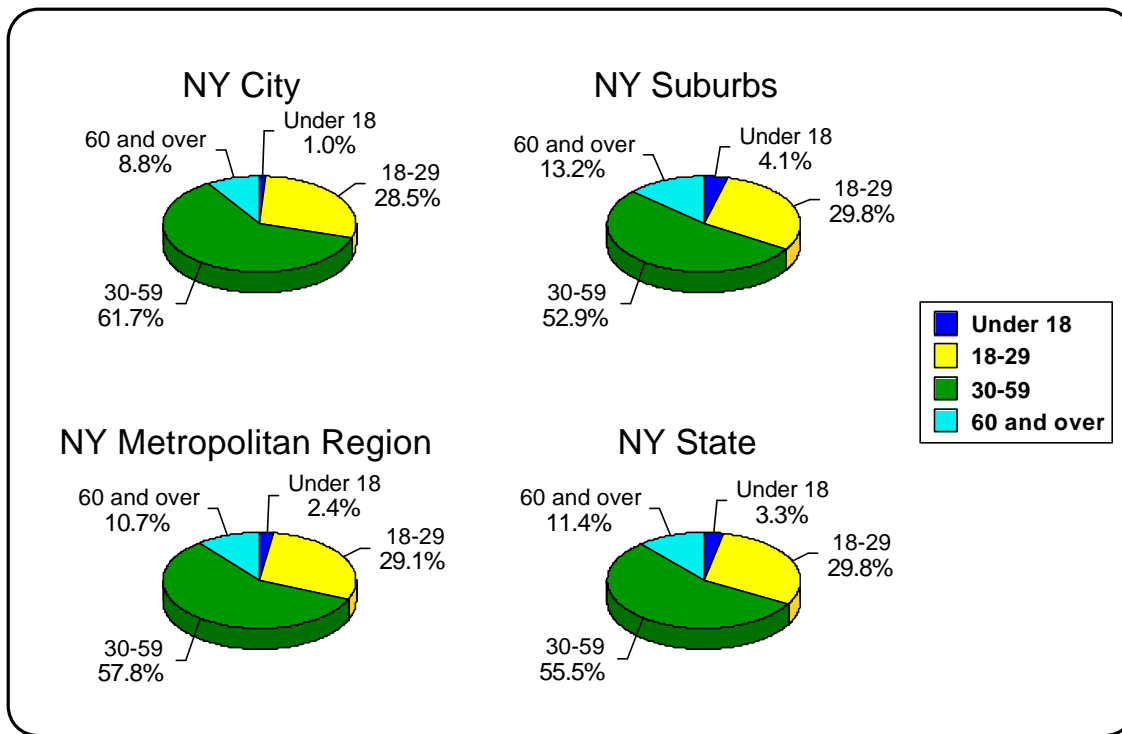


FIGURE 22
PERCENT OF MOTOR VEHICLE CRASHES
BY AGE OF FEMALE DRIVER
2000

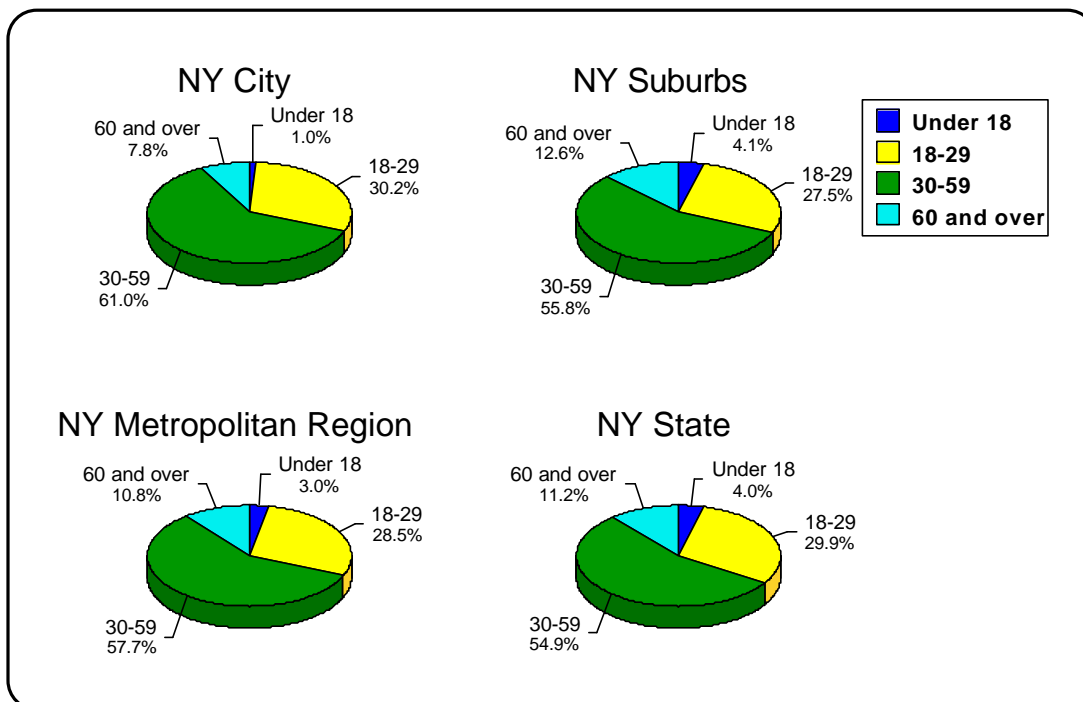


FIGURE 23
PERCENT OF MOTOR VEHICLE CRASHES
BY AGE OF MALE DRIVER
2000

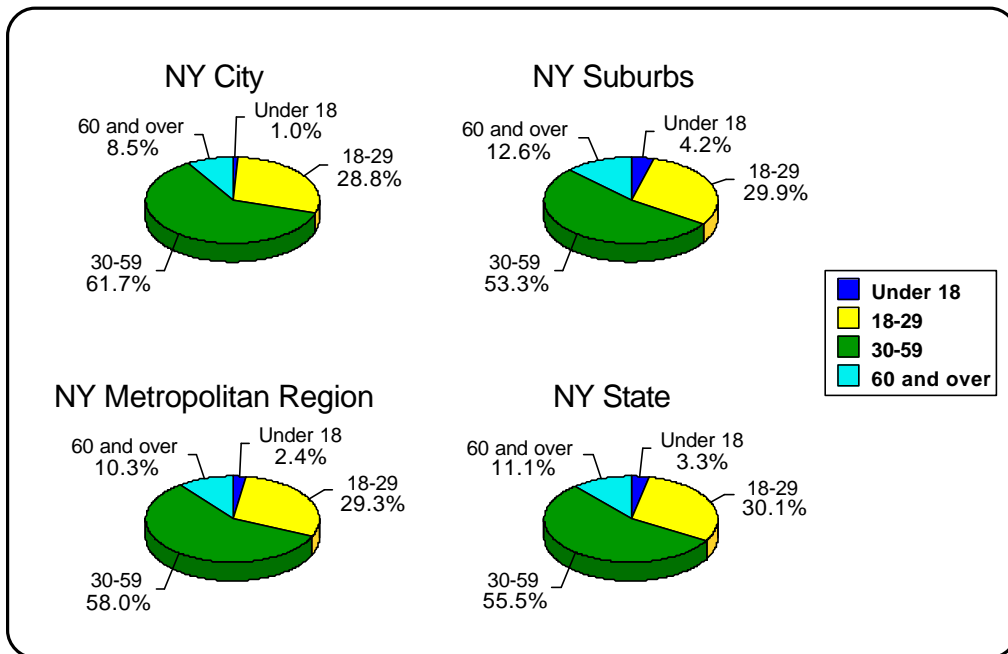
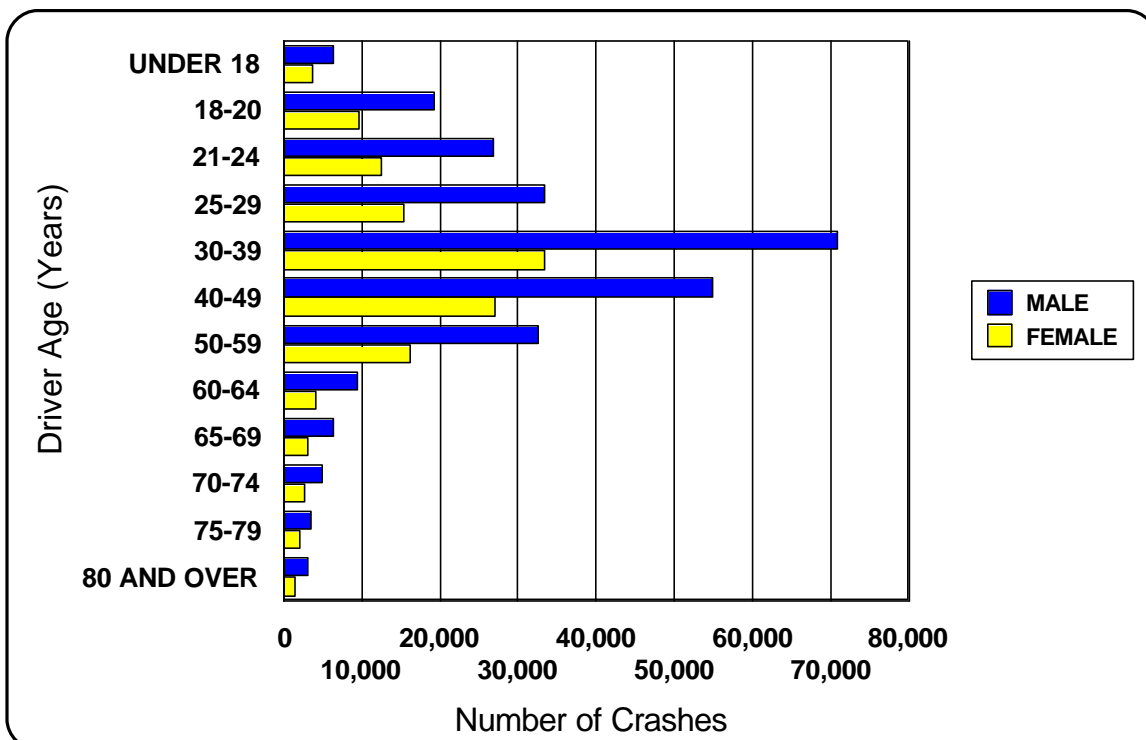
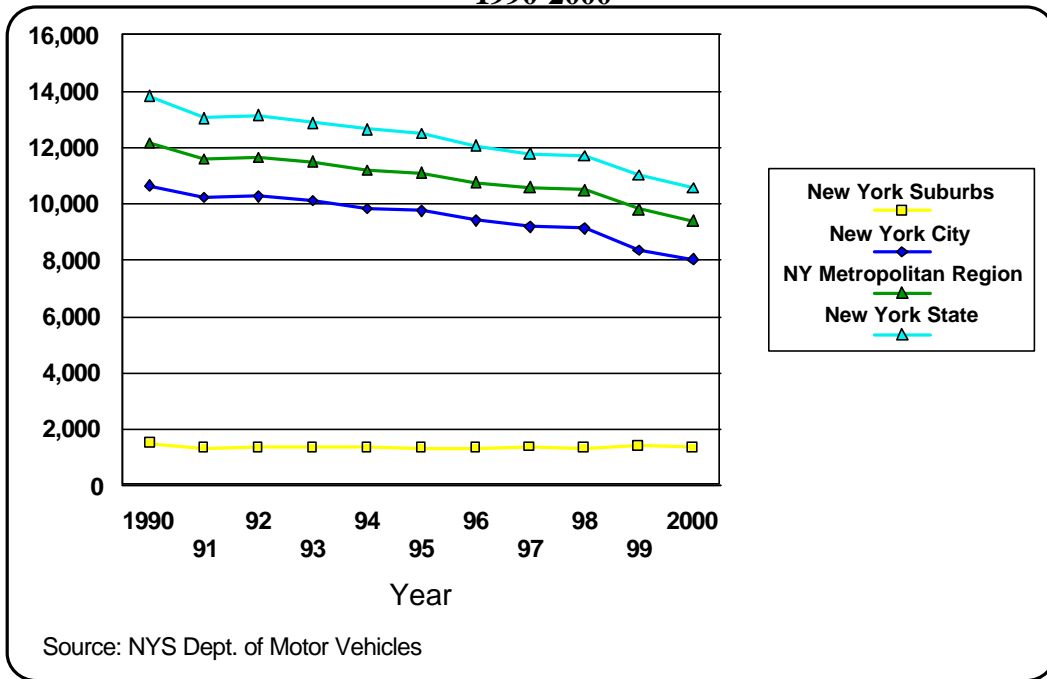


FIGURE 24
MOTOR VEHICLE CRASHES
BY AGE AND GENDER OF DRIVER
NEW YORK METROPOLITAN REGION
2000



**FIGURE 25
VEHICULAR/PEDESTRIAN CRASHES
AT INTERSECTION
1990-2000**



**FIGURE 26
VEHICULAR/PEDESTRIAN CRASHES
NOT AT INTERSECTION (MID-BLOCK)
1990-2000**

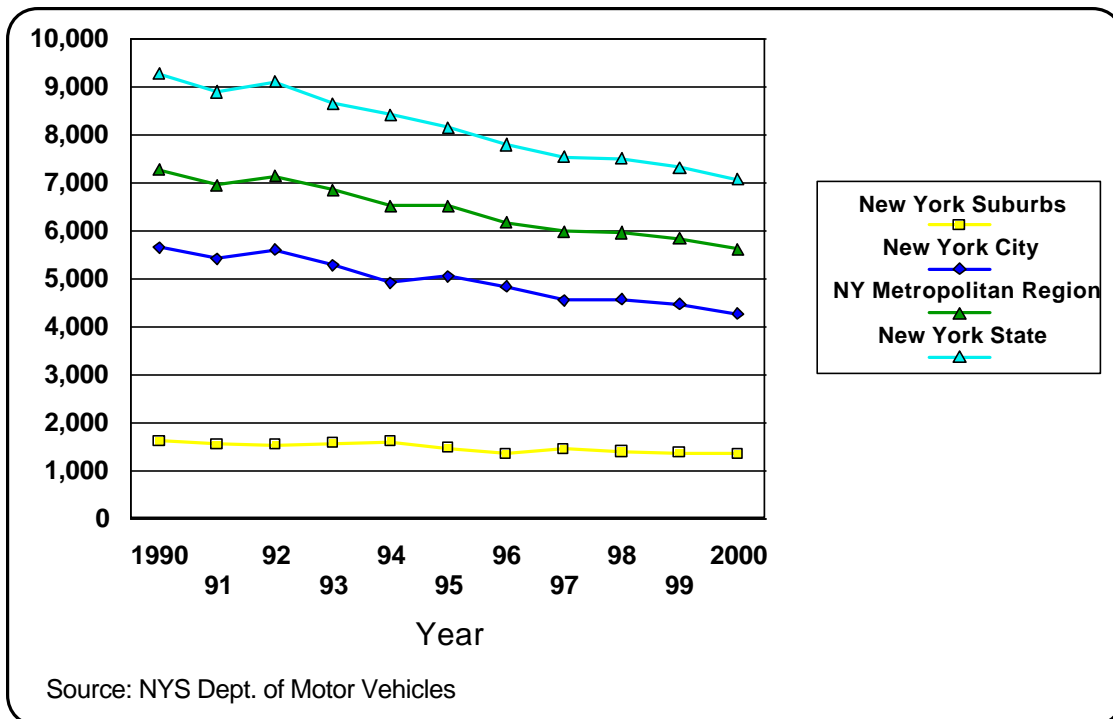


FIGURE 27
TOTAL PEDESTRIAN FATALITIES
IN VEHICULAR/PEDESTRIAN CRASHES
1990-2000

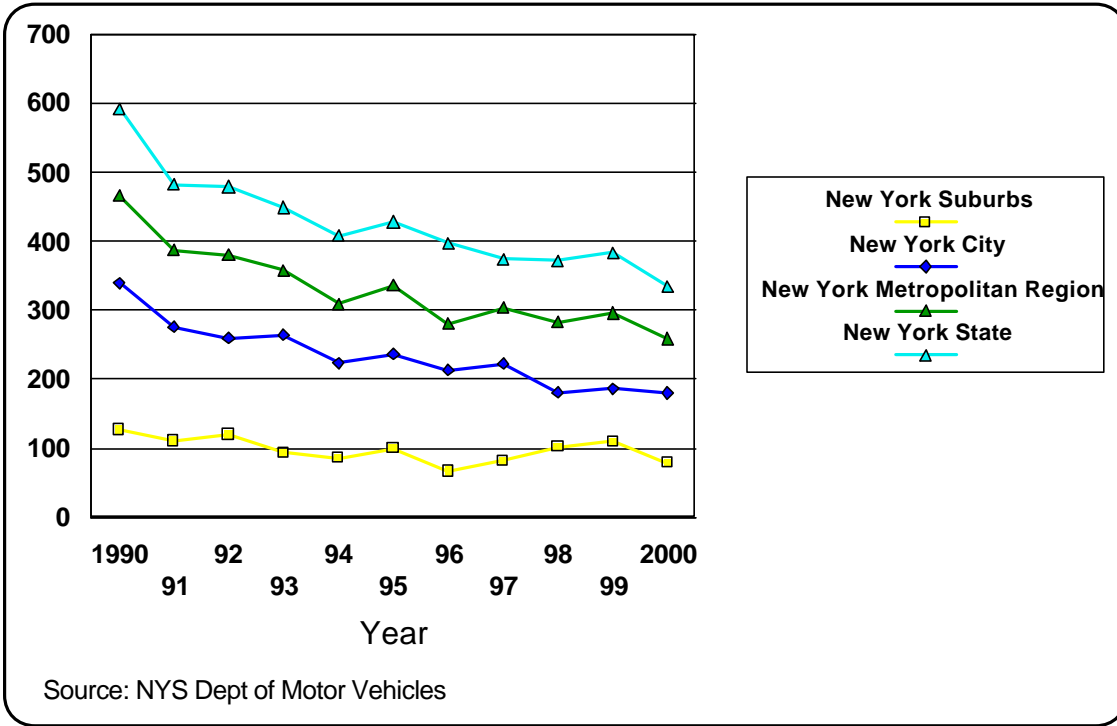


FIGURE 28
TOTAL BICYCLISTS KILLED OR INJURED
1990-2000

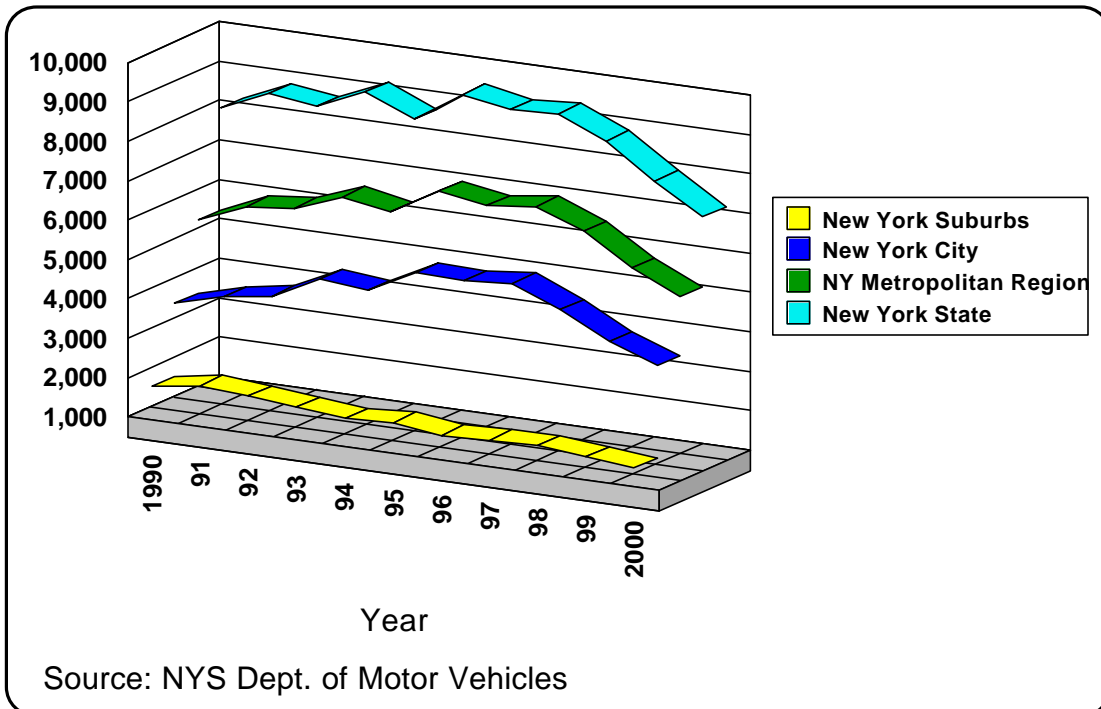


FIGURE 29
TOTAL BICYCLIST FATALITIES
IN VEHICULAR/BICYCLE CRASHES
1990-2000

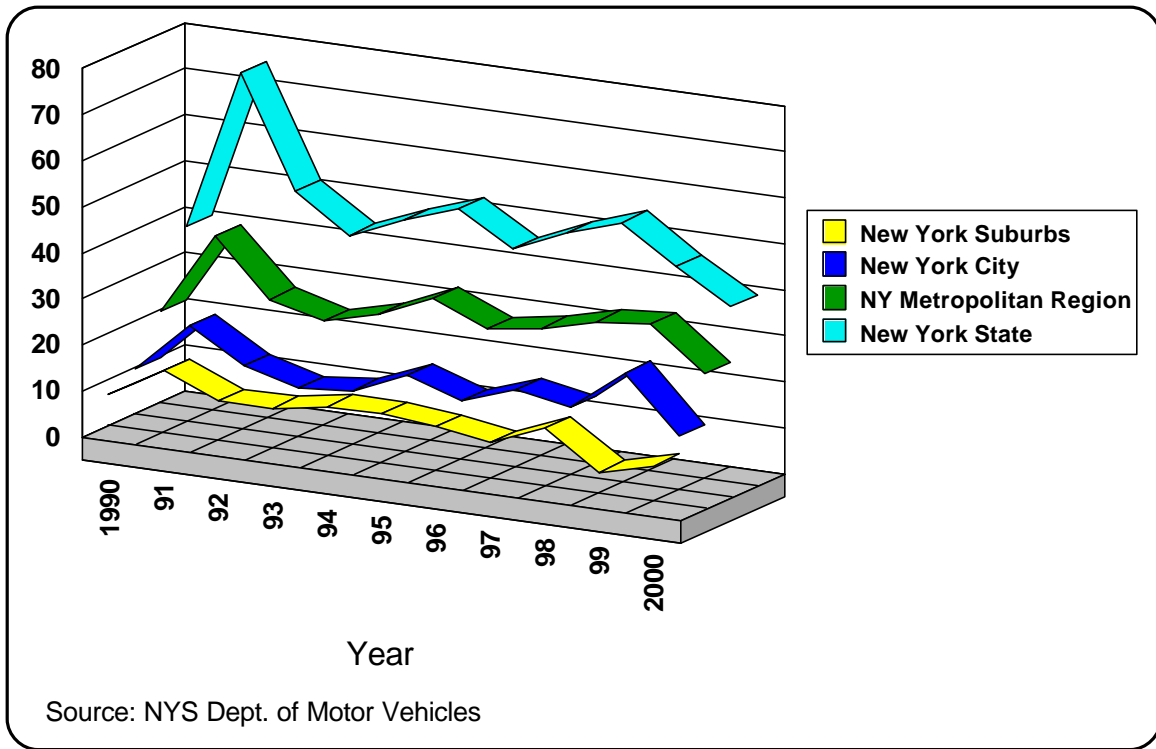


FIGURE 30
CRASHES ON ROAD SYSTEM BY JURISDICTION
NEW YORK CITY
1991-2000

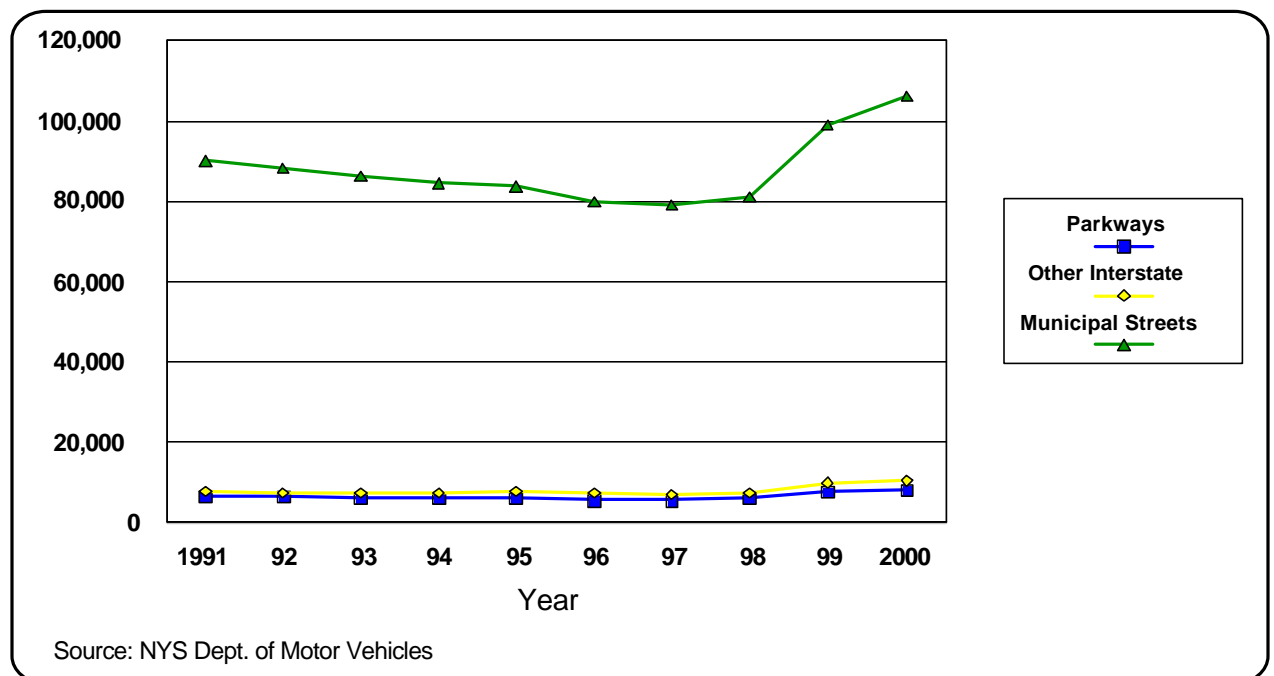


FIGURE 31
CRASHES ON ROAD SYSTEM BY JURISDICTION
NEW YORK SUBURBS
1991-2000

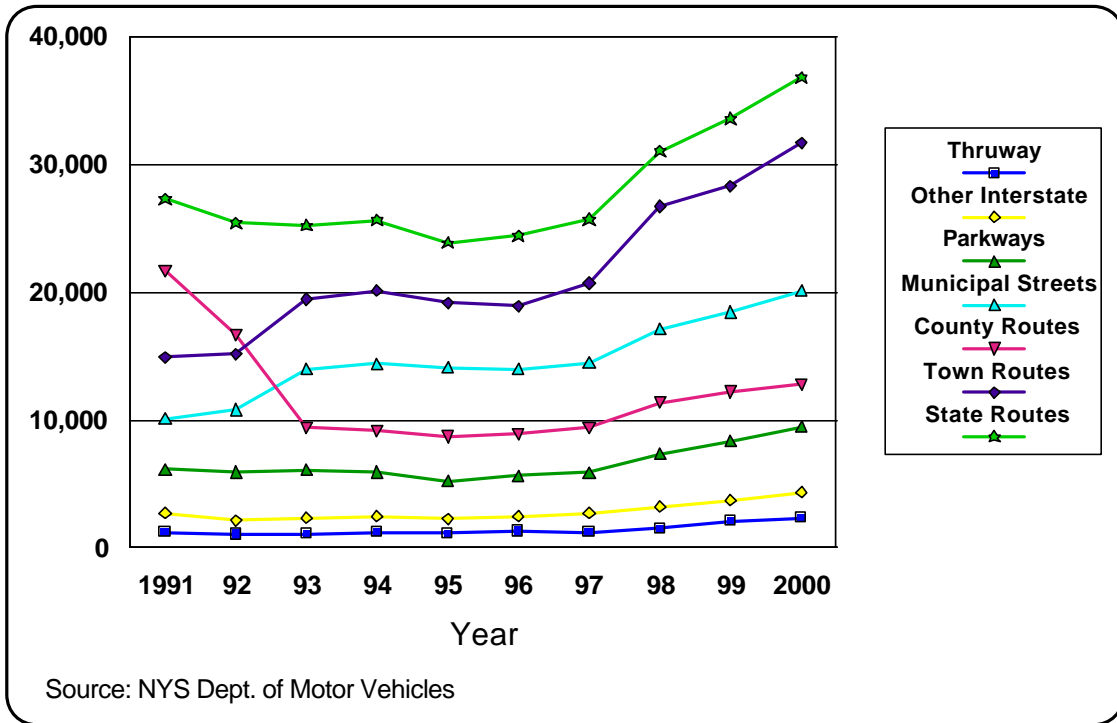


FIGURE 32
CRASHES ON ROAD SYSTEM BY JURISDICTION
DOWNSTATE NEW YORK
1991-2000

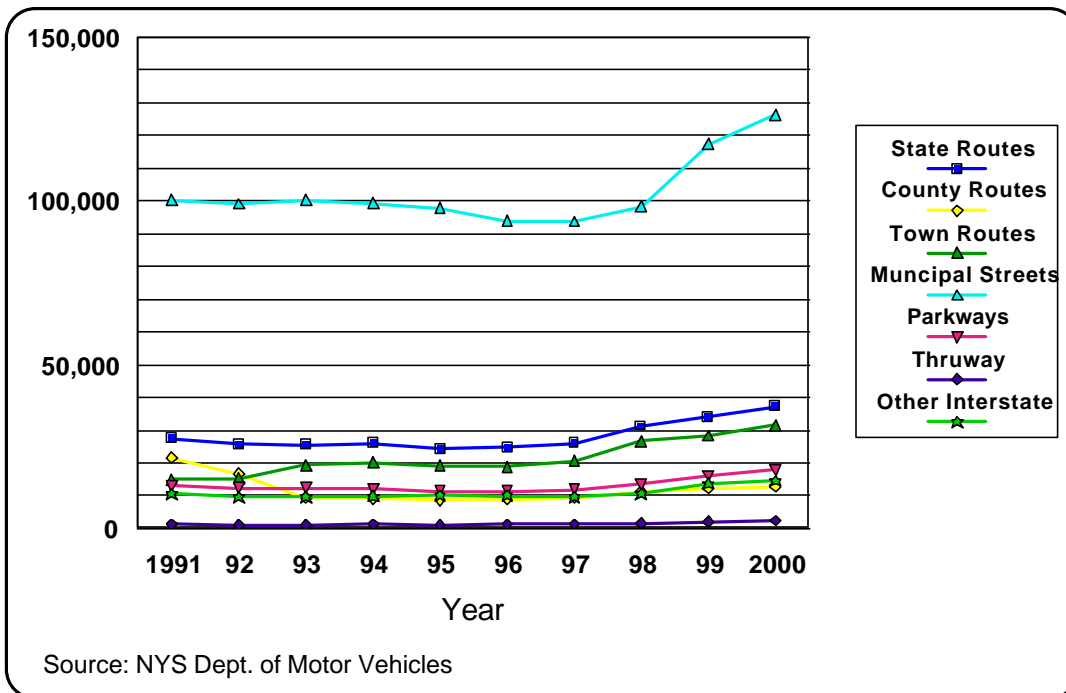


FIGURE 33
CRASHES ON ROAD SYSTEM BY JURISDICTION
NEW YORK STATE
1991-2000

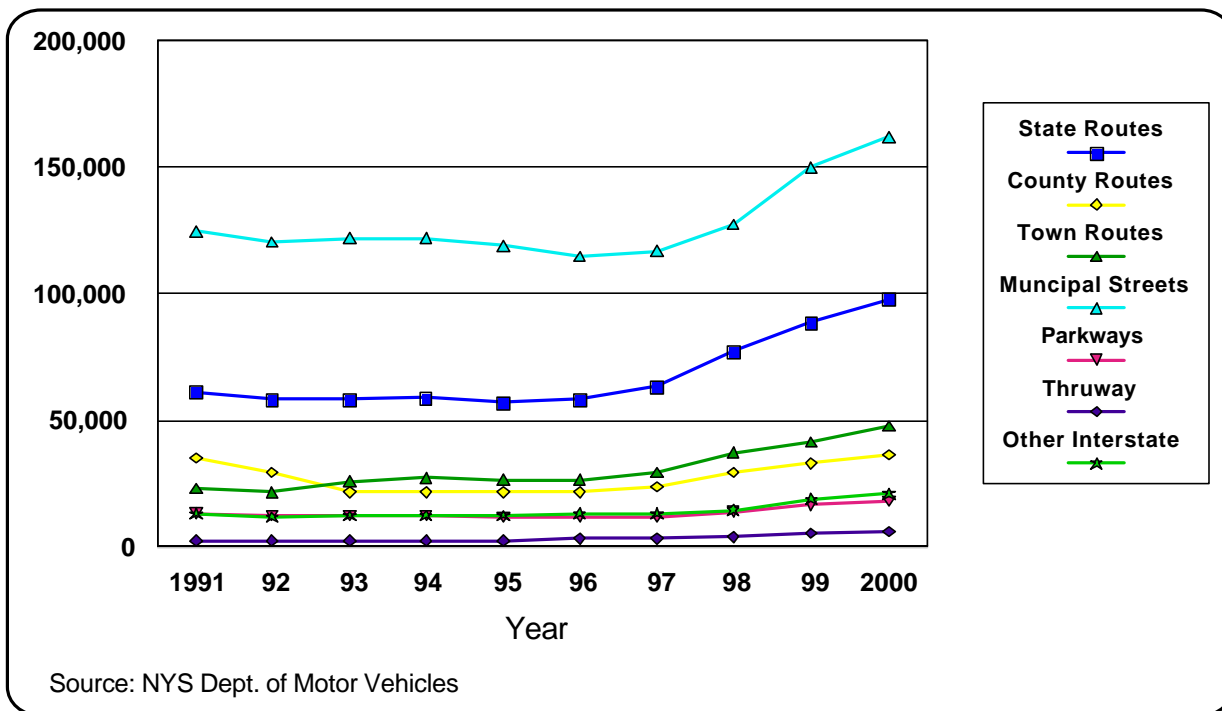
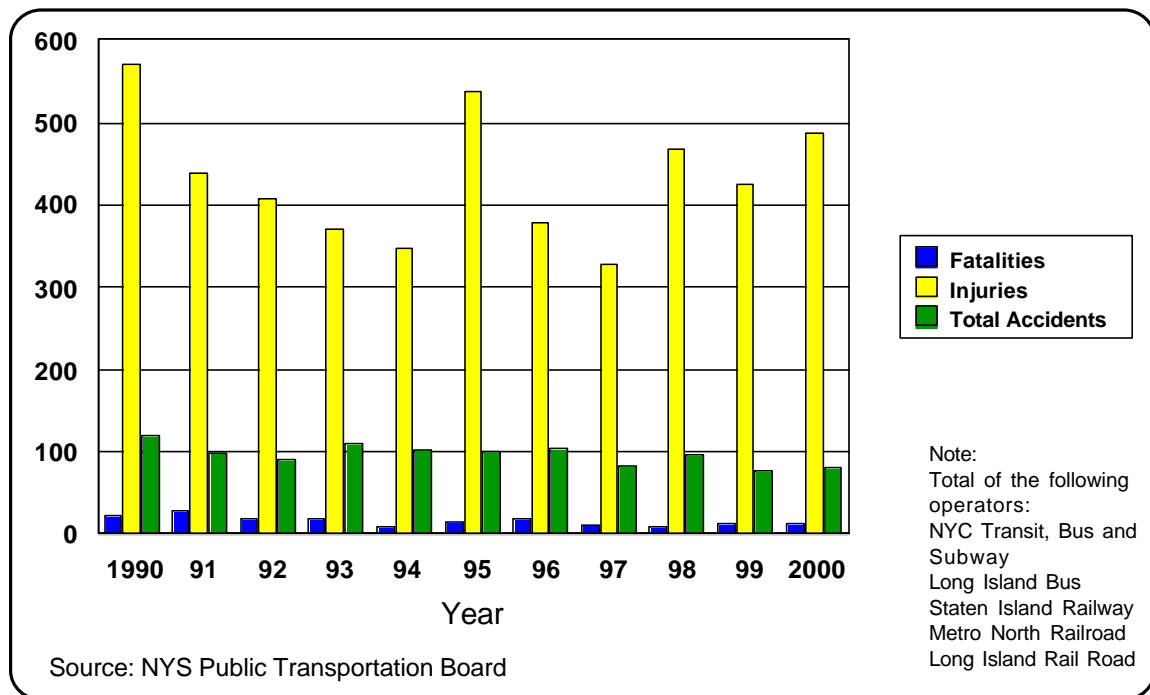


FIGURE 34
TRANSIT ACCIDENTS
METROPOLITAN TRANSPORTATION AUTHORITY
1990-2000



**PART III
TRANSPORTATION
SAFETY
DATA TABLES**

INDEX OF TABLES

Table	Table Name
Table 1	Total Number of Motor Vehicle Crashes 1990-2000
Table 2	Motor Vehicle Crashes Resulting in Fatality 1990-2000
Table 3	Fatality Rate of Motor Vehicle Crashes per 100,000 Population 1990-2000
Table 4	Motor Vehicle Crashes Resulting in Injury 1990-2000
Table 5	Motor Vehicle Crashes Resulting in Property Damage 1990-2000
Table 6	Motor Vehicle Crashes By Contributing Human Factors 1990-2000
Table 6A	Motor Vehicle Crashes By Contributing Human Factors – Alcohol Involvement 1999-2000
Table 7	Motor Vehicle Crashes By Contributing Vehicular Factors 1990-2000
Table 8	Motor Vehicle Crashes by Contributing Environmental Factors 1990-2000
Table 9	Total Number of Vehicles Involved In All Type of Crashes 1990-2000
Table 10	Total Number of Vehicles Involved in Crashes Resulting in Fatality 1990-2000
Table 11	Total Number of Vehicles Involved in Crashes Resulting in Injury 1990-2000
Table 12	Total Number of Vehicles Involved in Crashes Resulting in Property Damage 1990-2000
Table 13	Motor Vehicle Crashes Involving Male Drivers 1990-2000
Table 14	Motor Vehicle Crashes Involving Female Drivers 1990-2000
Table 15	1990 Motor Vehicle Crashes by Age and Gender of Driver
Table 16	1999 Motor Vehicle Crashes by Age and Gender of Driver
Table 17	2000 Motor Vehicle Crashes by Age and Gender of Driver
Table 18	Vehicular/Pedestrian Crashes at Intersection 1990-2000
Table 19	Vehicular/Pedestrian Crashes Not At Intersection (Mid-Block) 1990-2000
Table 20	Total Pedestrian Fatalities in Vehicular/Pedestrian Crashes 1990-2000
Table 21	Total Bicyclists Killed or Injured 1990-2000
Table 22	Total Bicyclist Fatalities in Vehicle/Bicycle Crashes 1990-2000
Table 23	Crashes on Road System By Jurisdiction – Bronx County 1991-2000
Table 24	Crashes on Road System By Jurisdiction – Kings County 1991-2000
Table 25	Crashes on Road System By Jurisdiction – New York County 1991-2000
Table 26	Crashes on Road System By Jurisdiction – Queens County 1991-2000
Table 27	Crashes on Road System By Jurisdiction – Richmond County 1991-2000
Table 28	Crashes on Road System By Jurisdiction – New York City 1991-2000
Table 29	Crashes on Road System By Jurisdiction – Dutchess County 1991-2000
Table 30	Crashes on Road System By Jurisdiction – Nassau County 1991-2000
Table 31	Crashes on Road System By Jurisdiction – Orange County 1991-2000
Table 32	Crashes on Road System By Jurisdiction – Putnam County 1991-2000
Table 33	Crashes on Road System By Jurisdiction – Rockland County 1991-2000
Table 34	Crashes on Road System by Jurisdiction – Suffolk County 1991-2000
Table 35	Crashes on Road System By Jurisdiction – Westchester County 1991-2000
Table 36	Crashes on Road System By Jurisdiction – New York Suburbs 1991-2000
Table 37	Crashes on Road System By Jurisdiction – Downstate New York 1991-2000
Table 38	Crashes on Road System By Jurisdiction – New York State 1991-2000
Table 39	Crashes on Road System By Jurisdiction – Downstate % of New York State 1991-2000
Table 40	Two Vehicle Collisions – Manner of Collision 1999-2000
Table 41	2000 Vehicle Crashes By Day of Week
Table 42	2000 Vehicle Crashes By Vehicle Type
Table 43	Transit Accidents MTA 1990-2000
Table 44	Transit Accidents Ratio Per Million Riders 1990-2000
Table 45	Transit Accidents Ratio Per Million Vehicle Miles Traveled 1990-2000

TABLE 1
TOTAL NUMBER OF MOTOR VEHICLE CRASHES

	1990	1991	1992	1993	1994	1995	1996	1997	1998	1999	2000
Bronx	16,680	15,106	14,573	13,819	13,493	13,568	12,899	13,114	13,272	17,950	19,953
Kings	33,450	31,441	31,360	30,922	30,485	30,129	28,499	28,768	30,082	35,782	38,151
New York	22,197	20,603	20,098	20,317	20,382	19,694	19,219	18,731	18,176	22,956	24,609
Queens	35,946	32,233	30,898	29,905	29,302	29,243	27,695	26,690	28,274	34,697	36,578
Richmond	6,398	5,883	5,822	5,469	5,171	5,361	5,266	5,125	5,318	5,781	6,258
NEW YORK CITY	114,671	105,266	102,751	100,432	98,833	97,995	93,578	92,428	95,122	117,166	125,549
Dutchess	5,187	4,467	4,207	4,097	4,320	4,116	4,512	4,733	5,815	6,577	7,041
Nassau	31,353	27,715	25,492	25,426	25,334	24,196	23,948	26,599	33,100	35,212	37,716
Orange	6,384	5,690	5,370	5,301	5,686	5,260	5,403	5,528	6,866	8,204	9,604
Putnam	1,972	1,738	1,598	1,629	1,744	1,545	1,688	1,773	1,936	2,141	2,649
Rockland	5,211	4,917	4,485	4,641	4,969	4,722	4,933	4,748	5,279	6,396	7,262
Suffolk	29,542	25,511	22,998	23,319	23,389	21,630	21,729	23,262	29,642	31,407	34,854
Westchester	16,628	14,754	13,573	13,673	14,074	13,503	13,992	14,097	16,314	17,452	19,153
NEW YORK SUBURBS	96,277	84,792	77,723	78,086	79,516	74,972	76,205	80,740	98,952	107,389	118,279
DOWNSTATE NY	210,948	190,058	180,474	178,518	178,349	172,967	169,783	173,168	194,074	224,555	243,828
NEW YORK STATE	308,107	274,875	258,596	257,209	259,184	253,136	250,521	263,604	306,646	356,981	392,245
<i>Downstate % of NYS</i>	68.5	69.1	69.8	69.4	68.8	68.3	67.8	65.7	63.3	62.9	62.2

Source: New York State Dept. of Motor Vehicles

TABLE 2
**MOTOR VEHICLE CRASHES
 RESULTING IN FATALITY**

	1990	1991	1992	1993	1994	1995	1996	1997	1998	1999	2000
Bronx	116	103	89	79	64	74	54	72	49	59	49
Kings	177	164	143	142	117	117	109	134	115	114	105
New York	132	95	88	99	82	96	84	81	59	66	70
Queens	158	156	170	140	133	132	116	123	112	118	100
Richmond	26	28	20	17	23	19	17	14	22	15	24
NEW YORK CITY	609	546	510	477	419	438	380	424	357	372	348
Dutchess	38	35	25	34	30	30	22	31	27	29	29
Nassau	143	118	122	104	107	101	75	112	101	123	94
Orange	70	39	42	38	47	35	37	39	31	43	30
Putnam	11	13	10	13	16	12	16	13	12	15	10
Rockland	24	18	14	19	25	20	14	26	26	22	18
Suffolk	192	186	174	181	146	166	153	147	162	153	151
Westchester	84	73	65	57	53	65	63	54	52	51	56
NEW YORK SUBURBS	562	482	452	446	424	429	380	422	411	436	388
DOWNSTATE NY	1,171	1,028	962	923	843	867	760	846	768	808	736
NEW YORK STATE	2,027	1,807	1,650	1,623	1,528	1,557	1,451	1,488	1,395	1,460	1,358
Downstate % of NYS	57.8	56.9	58.3	56.9	55.2	55.7	52.4	56.9	55.1	55.3	54.2
UNITED STATES	39,836	36,895	34,928	35,780	36,254	37,241	37,351	37,280	37,081	37,043	37,409
Downstate % of Nation	2.9	2.8	2.8	2.6	2.3	2.3	2.0	2.3	2.1	2.2	2.0

Source: New York State Dept. of Motor Vehicles

TABLE 3
**FATALITY RATE OF MOTOR VEHICLE CRASHES
 PER 100,000 POPULATION**

	1990	1991	1992	1993	1994	1995	1996	1997	1998	1999	2000
Bronx	9.64	8.59	7.45	6.59	5.34	6.19	4.52	6.06	4.10	4.94	3.68
Kings	7.69	7.16	6.25	6.20	5.11	5.13	4.79	5.98	5.07	5.03	4.26
New York	8.87	6.40	5.91	6.60	5.42	6.29	5.48	5.27	3.80	4.25	4.55
Queens	8.10	8.00	8.70	7.13	6.76	6.69	5.86	6.23	5.60	5.90	4.49
Richmond	6.86	7.27	5.12	4.30	5.81	4.79	4.26	3.48	5.40	3.63	5.41
NEW YORK CITY	8.32	7.47	6.97	6.49	5.69	5.94	5.15	5.77	4.81	5.01	4.35
Dutchess	14.65	13.42	9.53	12.93	11.48	11.47	8.38	11.71	10.18	10.81	10.35
Nassau	11.11	9.14	9.42	8.00	8.22	7.75	5.75	8.59	7.76	9.42	7.04
Orange	22.75	12.51	13.32	11.94	14.69	10.86	11.40	11.92	9.42	12.87	8.78
Putnam	13.10	15.20	11.51	14.76	17.96	13.31	17.59	14.07	12.85	15.82	10.44
Rockland	9.04	6.72	5.19	6.96	9.08	7.22	5.03	9.29	9.24	7.75	6.28
Suffolk	14.53	14.04	13.05	13.49	10.84	12.28	11.28	10.79	11.81	11.06	10.64
Westchester	9.60	8.33	7.37	6.43	5.97	7.29	7.05	6.03	5.79	5.63	6.06
NEW YORK SUBURBS	12.77	10.91	10.17	9.98	9.46	9.54	8.43	9.32	9.05	10.23	8.97
DOWNSTATE NY	9.99	8.77	8.18	7.81	7.12	7.30	6.39	7.13	6.42	7.00	6.05
NEW YORK STATE	11.27	10.20	9.12	8.93	8.40	8.56	7.98	8.20	7.68	8.02	7.16
UNITED STATES	16.02	14.63	13.70	13.88	13.92	14.17	14.08	13.93	13.72	13.58	13.29

Source: NYMTC Estimates based on statistics from New York State Dept. of Motor Vehicles and Census Bureau

TABLE 4
**MOTOR VEHICLE CRASHES
 RESULTING IN INJURY**

	1990	1991	1992	1993	1994	1995	1996	1997	1998	1999	2000
Bronx	12,316	11,770	12,071	11,418	10,983	11,249	10,612	10,904	11,071	11,960	13,194
Kings	25,282	24,993	26,425	26,438	26,252	26,286	25,062	25,559	26,721	26,511	27,190
New York	16,110	15,917	16,787	17,088	16,913	16,250	15,824	15,711	15,243	14,679	14,624
Queens	23,760	22,778	23,733	23,299	23,049	23,461	22,000	21,849	23,160	23,875	24,459
Richmond	4,374	4,272	4,486	4,304	4,036	4,188	4,242	4,133	4,204	3,808	3,805
NEW YORK CITY	81,842	79,730	83,502	82,547	81,233	81,434	77,740	78,156	80,399	80,833	83,272
Dutchess	3,044	2,739	2,742	2,733	2,851	2,800	2,901	2,829	2,646	2,818	2,755
Nassau	18,163	17,200	17,388	17,528	17,418	16,997	16,884	16,828	16,933	16,681	17,304
Orange	3,971	3,718	3,801	3,731	3,829	3,631	3,674	3,324	3,364	3,511	3,662
Putnam	1,108	1,053	998	1,046	1,075	960	1,030	1,033	910	954	959
Rockland	3,258	3,176	3,041	3,153	3,305	3,162	3,206	2,998	2,849	2,930	3,160
Suffolk	17,802	16,562	15,969	16,486	16,437	15,483	15,603	14,656	14,974	14,621	15,233
Westchester	9,016	8,669	8,739	8,740	8,885	8,683	8,822	8,577	8,647	8,409	8,672
NEW YORK SUBURBS	56,362	53,117	52,678	53,417	53,800	51,716	52,120	50,245	50,323	49,924	51,745
DOWNSTATE NY	138,204	132,847	136,180	135,964	135,033	133,150	129,860	128,401	130,722	130,757	135,017
NEW YORK STATE	198,715	189,310	193,391	192,587	191,360	189,201	185,670	182,526	181,766	182,768	188,770
Downstate % of NYS	69.5	70.2	70.4	70.6	70.6	70.4	69.9	70.3	71.9	71.5	71.5
UNITED STATES	2,501,000	2,210,000	2,216,000	n/a	n/a	2,334,623	2,410,794	2,400,000	2,029,000	2,054,000	2,070,000
Downstate % of Nation	5.5	6.0	6.1	n/a	n/a	5.7	5.4	5.4	6.4	6.4	6.5

n/a - Data not available

Source: New York State Dept of Motor Vehicles. Statistical Abstract of the United States

TABLE 5
**MOTOR VEHICLE CRASHES
 RESULTING IN PROPERTY DAMAGE**

	1990	1991	1992	1993	1994	1995	1996	1997	1998	1999	2000
Bronx	4,248	3,233	2,413	2,322	2,446	2,245	2,233	2,138	2,152	5,931	6,710
Kings	7,991	6,284	4,792	4,342	4,116	3,726	3,328	3,075	3,246	9,157	10,856
New York	5,955	4,591	3,223	3,130	3,387	3,348	3,311	2,939	2,874	8,211	9,913
Queens	12,028	9,299	6,995	6,466	6,120	5,650	5,379	4,718	5,002	10,704	12,019
Richmond	1,998	1,583	1,316	1,148	1,112	1,154	1,007	978	1,092	1,958	2,429
NEW YORK CITY	32,220	24,990	18,739	17,408	17,181	16,123	15,258	13,848	14,366	35,961	41,927
Dutchess	2,105	1,693	1,440	1,330	1,439	1,286	1,589	1,873	3,142	3,730	4,257
Nassau	13,047	10,397	7,982	7,794	7,809	7,098	6,989	9,659	16,066	18,408	20,318
Orange	2,343	1,933	1,527	1,532	1,810	1,594	1,692	2,165	3,471	4,650	5,912
Putnam	853	672	590	570	653	573	642	727	1,014	1,172	1,680
Rockland	1,929	1,723	1,430	1,469	1,639	1,540	1,713	1,724	2,404	3,444	4,084
Suffolk	11,548	8,763	6,855	6,652	6,806	5,981	5,973	8,459	14,506	16,633	19,470
Westchester	7,528	6,012	4,769	4,876	5,136	4,755	5,107	5,466	7,615	8,992	10,425
NEW YORK SUBURBS	39,353	31,193	24,593	24,223	25,292	22,827	23,705	30,073	48,218	57,029	66,146
DOWNSTATE NY	71,573	56,183	43,332	41,631	42,473	38,950	38,963	43,921	62,584	92,990	108,073
NEW YORK STATE	107,365	83,758	63,555	62,999	66,296	62,378	63,400	79,590	123,485	172,753	202,117
Downstate % of NYS	66.7	67.1	68.2	66.1	64.1	62.4	61.5	55.2	50.7	53.8	53.5

Source: New York State Dept. of Motor Vehicles

TABLE 6
**MOTOR VEHICLE CRASHES
 BY CONTRIBUTING HUMAN FACTORS**

	1990	1991	1992	1993	1994	1995	1996	1997	1998	1999	2000
Bronx	13,265	12,852	12,043	10,856	9,830	10,293	10,035	9,936	10,089	16,252	18,748
Kings	27,174	27,608	27,358	27,928	27,448	28,859	26,817	25,843	27,468	36,636	39,450
New York	19,407	18,875	19,083	18,987	18,706	18,276	18,380	17,645	16,875	22,259	24,709
Queens	25,863	25,435	24,555	23,503	22,503	23,119	21,562	20,706	22,415	29,162	30,717
Richmond	5,389	5,310	5,277	4,730	4,296	4,535	4,323	4,180	4,295	5,041	5,106
NEW YORK CITY	91,098	90,080	88,316	86,004	82,783	85,082	81,117	78,310	81,142	109,350	118,730
Dutchess	3,735	3,371	3,125	3,109	3,165	3,208	3,452	3,769	4,532	5,111	5,495
Nassau	22,476	20,746	19,591	19,703	19,240	19,579	19,287	23,200	29,918	31,896	34,301
Orange	5,145	4,667	4,502	4,595	4,546	4,505	4,508	4,468	6,008	6,781	7,993
Putnam	1,423	1,368	1,198	1,196	1,252	1,195	1,243	1,375	1,605	1,735	2,199
Rockland	4,263	3,929	3,735	3,696	3,843	4,041	3,989	4,108	4,793	5,710	6,520
Suffolk	23,453	20,954	14,536	19,605	19,039	19,142	18,565	21,393	28,103	29,312	32,640
Westchester	8,417	8,135	7,566	7,475	7,614	7,696	8,081	9,045	10,982	11,855	13,524
NEW YORK SUBURBS	68,912	63,170	54,253	59,379	58,699	59,366	59,125	67,358	85,941	92,400	102,672
DOWNSTATE NY	160,010	153,250	142,569	145,383	141,482	144,448	140,242	145,668	167,083	201,750	221,402
NEW YORK STATE	238,794	224,255	209,304	213,273	210,333	213,552	209,673	222,969	265,169	312,481	344,232
Downstate % of NYS	67.0	68.3	68.1	68.2	67.3	67.6	66.9	65.3	63.0	64.6	64.3

Source: New York State Dept of Motor Vehicles

TABLE 6A
**MOTOR VEHICLE CRASHES
 BY CONTRIBUTING HUMAN FACTORS
 ALCOHOL INVOLVEMENT**

	1999	2000	1999 a	1999 b	2000 a	2000 b
Bronx	220	215	1.4	0.6	1.1	0.5
Kings	322	443	0.9	0.4	1.1	0.6
New York	250	236	1.1	0.5	1.0	0.5
Queens	344	373	1.2	0.5	1.2	0.5
Richmond	59	74	1.2	0.5	1.4	0.7
NEW YORK CITY	1,195	1,341	1.2	0.5	1.16	0.6
Dutchess	230	256	4.5	2.1	4.7	2.1
Nassau	584	665	1.8	0.8	1.9	0.9
Orange	269	291	4.0	1.8	3.6	1.7
Putnam	87	98	5.0	2.3	4.5	2.1
Rockland	158	173	2.8	1.2	2.7	1.2
Suffolk	816	924	7.0	1.3	2.8	1.3
Westchester	372	493	1.3	1.3	3.6	1.6
NEW YORK SUBURBS	2,516	2,900	3.8	1.5	3.4	1.6
DOWNSTATE NY	3,711	4,241				
NEW YORK STATE	9,114	10,090	2.9	1.3	2.9	1.4
Downstate % of NYS	40.72	42.03				

a = % of human factor crashes b = % of all crash factors

Source: New York State Dept. of Motor Vehicles

TABLE 7
MOTOR VEHICLE CRASHES
BY CONTRIBUTING VEHICULAR FACTORS

	1990	1991	1992	1993	1994	1995	1996	1997	1998	1999	2000
Bronx	2,572	2,133	1,516	1,248	963	1,021	836	777	804	1,095	1,031
Kings	2,807	3,116	3,015	3,005	2,931	2,680	2,504	2,321	2,185	2,738	2,637
New York	2,039	1,851	2,053	1,983	1,699	1,422	1,346	1,189	1,084	1,139	1,169
Queens	3,164	2,722	2,526	2,487	2,235	1,968	1,795	1,753	1,610	2,013	1,902
Richmond	651	497	552	508	462	402	393	274	231	228	254
NEW YORK CITY	11,233	10,319	9,662	9,231	8,290	7,493	6,874	6,314	5,914	7,213	6,993
Dutchess	178	195	150	153	143	123	106	160	190	182	225
Nassau	725	651	598	628	550	476	525	499	738	737	773
Orange	266	266	228	216	208	219	232	209	278	291	362
Putnam	98	72	48	56	68	58	57	59	76	91	86
Rockland	218	185	173	161	171	160	177	156	194	232	277
Suffolk	923	797	488	643	608	632	553	679	815	883	884
Westchester	626	523	487	509	434	457	384	441	553	555	645
NEW YORK SUBURBS	3,034	2,689	2,172	2,366	2,182	2,125	2,034	2,203	2,844	2,971	3,252
DOWNSTATE NY	14,267	13,008	11,834	11,597	10,472	9,618	8,908	8,517	8,758	10,184	10,245
NEW YORK STATE	18,000	16,253	14,809	14,588	13,446	12,423	11,712	11,490	12,805	14,826	15,328
Downstate % of NYS	79.3	80.0	79.9	79.5	77.9	77.4	76.1	74.1	68.4	68.7	66.8

Source: New York State Dept. of Motor Vehicles

TABLE 8
MOTOR VEHICLE CRASHES
BY CONTRIBUTING ENVIRONMENTAL FACTORS

	1990	1991	1992	1993	1994	1995	1996	1997	1998	1999	2000
Bronx	2,264	2,083	2,082	1,930	1,938	1,830	1,779	1,445	1,484	1,907	2,028
Kings	4,102	3,579	3,541	3,590	3,763	3,699	3,667	2,852	3,045	3,491	3,599
New York	2,319	2,133	2,121	2,190	2,201	1,850	2,038	1,600	1,410	1,823	1,954
Queens	4,930	4,351	4,402	3,964	4,100	3,762	4,096	3,125	2,955	3,811	3,827
Richmond	1,453	1,193	1,370	1,064	1,076	867	1,032	767	788	796	816
NEW YORK CITY	15,068	13,339	13,516	12,738	13,078	12,008	12,612	9,789	9,682	11,828	12,224
Dutchess	1,288	1,136	1,246	1,163	1,375	1,126	1,399	1,338	1,784	2,160	2,301
Nassau	6,597	5,522	5,584	5,310	5,762	4,423	5,072	4,393	5,127	4,545	5,315
Orange	1,826	1,597	1,627	1,566	1,952	1,497	1,668	1,736	2,102	2,752	3,085
Putnam	701	574	598	648	715	513	695	587	615	684	944
Rockland	1,241	1,232	1,076	1,142	1,449	1,068	1,315	1,034	1,014	1,358	1,558
Suffolk	6,241	5,385	3,735	4,670	5,758	4,127	5,185	4,215	5,235	5,267	6,659
Westchester	3,068	2,723	2,650	2,766	3,268	2,404	2,658	2,286	2,741	2,939	3,378
NEW YORK SUBURBS	20,962	18,169	16,516	17,265	20,279	15,158	17,992	15,589	18,618	19,705	23,240
DOWNSTATE NY	36,030	31,508	30,032	30,003	33,357	27,166	30,604	25,378	28,300	31,533	35,464
NEW YORK STATE	58,349	51,211	50,171	49,748	55,967	47,252	51,706	51,230	58,806	74,181	85,281
Downstate % of NYS	61.7	61.5	59.9	60.3	59.6	57.5	59.2	49.5	48.1	42.5	41.6

Source: New York State Dept. of Motor Vehicles

TABLE 9
**TOTAL NUMBER OF VEHICLES
 INVOLVED IN ALL TYPE OF CRASHES**

	1990	1991	1992	1993	1994	1995	1996	1997	1998	1999	2000
Bronx	31,487	28,234	27,205	25,550	25,074	25,071	23,936	24,363	25,044	34,843	38,989
Kings	64,735	60,801	60,250	58,987	58,196	57,218	53,868	54,609	57,498	69,915	75,273
New York	40,458	37,223	36,015	36,255	36,528	35,107	34,085	33,305	32,442	42,644	46,220
Queens	71,458	63,855	60,801	58,657	57,498	57,136	53,954	52,143	55,673	69,076	73,185
Richmond	12,590	11,520	11,361	10,639	10,107	10,438	10,212	10,028	10,416	11,394	12,420
NEW YORK C TY	220,728	201,633	195,632	190,088	187,403	184,970	176,055	174,448	181,073	227,872	246,087
Dutchess	9,221	7,914	7,353	7,192	7,662	7,205	7,859	7,995	9,771	10,808	11,547
Nassau	62,649	55,151	50,402	50,549	50,497	48,241	47,849	53,356	66,224	70,634	75,342
Orange	11,030	9,910	9,330	9,269	10,126	9,100	9,312	9,259	11,696	13,608	16,044
Putnam	3,366	2,980	2,716	2,743	3,036	2,658	2,893	3,029	3,221	3,561	4,358
Rockland	9,900	9,340	8,463	8,889	9,464	8,887	9,361	8,960	10,089	12,098	13,587
Suffolk	57,263	49,441	44,535	44,912	45,384	41,941	42,116	45,322	57,818	60,944	67,185
Westchester	31,363	49,440	25,262	25,609	26,507	25,219	26,298	26,381	30,266	32,309	35,347
NEW YORK SUBURBS	184,792	184,176	148,061	149,163	152,676	143,251	145,688	154,302	189,085	203,962	223,410
DOWNSTATE NY	405,520	385,809	343,693	339,251	340,079	328,221	321,743	328,750	370,158	431,834	469,497
NEW YORK STATE	574,970	511,037	478,966	477,335	483,580	466,820	461,589	482,607	560,734	653,141	714,839
Downstate % of NYS	70.5	75.5	71.8	71.1	70.3	70.3	69.7	68.1	66.0	66.1	65.7

Source: New York State Dept. of Motor Vehicles

TABLE 10
**TOTAL NUMBER OF VEHICLES
 INVOLVED IN CRASHES RESULTING IN FATALITY**

	1990	1991	1992	1993	1994	1995	1996	1997	1998	1999	2000
Bronx	181	146	132	109	98	111	76	98	81	96	73
Kings	283	275	221	211	174	179	163	195	165	169	166
New York	199	129	115	134	108	141	107	108	74	100	97
Queens	252	248	268	207	217	195	191	185	177	182	146
Richmond	39	47	26	28	38	37	23	18	32	24	39
NEW YORK CITY	954	845	762	689	635	663	560	604	529	571	521
Dutchess	64	57	36	58	46	53	37	50	38	46	48
Nassau	211	189	185	172	158	159	121	177	156	174	160
Orange	103	56	73	63	77	52	56	63	50	62	43
Putnam	3	20	18	20	25	22	27	21	19	26	19
Rockland	39	26	21	36	39	21	20	42	40	29	24
Suffolk	296	292	291	286	248	252	238	235	263	246	258
Westchester	135	292	91	90	77	97	92	81	67	74	93
NEW YORK SUBURBS	851	932	715	725	670	656	591	669	633	657	645
DOWNSTATE NY	1,805	1,777	1,477	1,414	1,305	1,319	1,151	1,273	1,162	1,228	1,166
NEW YORK STATE	3,120	2,785	2,544	2,473	2,390	2,377	2,227	2,305	2,141	2,233	2,118
Downstate % of NYS	57.9	63.8	58.1	57.2	54.6	55.5	51.7	55.2	54.3	55.0	55.1

Source: New York State Department of Motor Vehicles

TABLE 11
**TOTAL NUMBER OF VEHICLES
 INVOLVED IN CRASHES RESULTING IN INJURY**

	1990	1991	1992	1993	1994	1995	1996	1997	1998	1999	2000
Bronx	22,583	21,457	22,094	20,727	20,020	20,375	19,303	19,908	20,535	22,693	25,277
Kings	47,738	47,454	49,956	49,646	49,523	49,321	46,874	48,066	50,557	50,855	52,592
New York	28,091	27,709	29,268	29,688	29,455	28,144	27,276	27,168	26,468	25,799	26,036
Queens	46,441	44,353	46,058	45,172	44,780	45,276	42,741	42,247	45,178	47,019	48,429
Richmond	8,449	8,234	8,591	8,254	7,801	8,063	8,161	8,017	8,162	7,397	7,466
NEW YORK CITY	153,302	149,207	155,967	153,487	151,579	151,179	144,355	145,406	150,900	153,763	159,800
Dutchess	5,465	4,869	4,888	4,907	5,145	4,998	5,191	5,005	4,785	5,046	4,854
Nassau	35,954	33,953	34,170	34,700	34,575	33,769	33,660	33,576	33,906	33,462	34,613
Orange	6,912	6,545	6,707	6,666	6,953	6,388	6,498	5,771	5,988	6,188	6,505
Putnam	1,888	1,796	1,710	1,766	1,903	1,664	1,815	1,817	1,578	1,665	1,671
Rockland	6,128	6,045	5,767	6,086	6,357	6,013	6,160	5,727	5,525	5,662	6,103
Suffolk	34,174	31,884	30,756	31,707	31,792	29,941	30,200	28,481	29,166	28,338	29,534
Westchester	16,779	31,883	16,149	16,284	16,669	16,125	16,591	16,139	16,298	15,814	16,359
NEW YORK SUBURBS	107,300	116,975	100,147	102,116	103,394	98,898	100,115	96,516	97,246	96,175	99,639
DOWNSTATE NY	260,602	266,182	256,114	255,603	254,973	250,077	244,470	241,922	248,146	249,938	259,439
NEW YORK STATE	364,706	347,319	355,078	355,104	355,199	347,789	341,836	336,107	337,891	341,089	353,778
Downstate % of NYS	71.5	76.6	72.1	72.0	71.8	71.9	71.5	72.0	73.4	73.3	73.3

Source: New York State Department of Motor Vehicles

TABLE 12
**TOTAL NUMBER OF VEHICLES
 INVOLVED IN CRASHES RESULTING IN PROPERTY DAMAGE**

	1990	1991	1992	1993	1994	1995	1996	1997	1998	1999	2000
Bronx	8,723	6,631	4,979	4,714	4,956	4,585	4,557	4,357	4,428	12,054	13,639
Kings	16,714	13,072	10,073	9,130	8,499	7,718	6,831	6,348	6,776	18,891	22,515
New York	12,168	9,385	6,632	6,433	6,965	6,822	6,702	6,029	5,900	16,743	20,087
Queens	24,765	19,254	14,475	13,278	12,501	11,665	11,022	9,711	10,318	21,875	24,610
Richmond	4,102	3,239	2,744	2,357	2,268	2,338	2,028	1,993	2,222	3,973	4,915
NEW YORK CITY	66,472	51,581	38,903	35,912	35,189	33,128	31,140	28,438	29,644	73,536	85,766
Dutchess	3,692	2,988	2,429	2,227	2,471	2,154	2,631	2,940	4,948	5,716	6,645
Nassau	26,484	21,009	16,047	15,677	15,764	14,313	14,068	19,603	32,162	36,998	40,569
Orange	4,015	3,309	2,550	2,540	3,096	2,660	2,758	3,425	5,658	7,358	9,496
Putnam	1,475	1,164	988	957	1,108	972	1,051	1,191	1,624	1,870	2,668
Rockland	3,733	3,269	2,675	2,767	3,068	2,853	3,181	3,191	4,524	6,407	7,460
Suffolk	22,793	17,265	13,488	12,919	13,344	11,748	11,678	16,606	28,389	32,360	37,393
Westchester	14,449	17,265	9,022	9,235	9,761	8,997	9,615	10,161	13,901	16,421	18,895
NEW YORK SUBURBS	76,641	66,269	47,199	46,322	48,612	43,697	44,982	57,117	91,206	107,130	123,126
DOWNSTATE NY	143,113	117,850	86,102	82,234	83,801	76,825	76,122	85,555	120,850	180,666	208,892
NEW YORK STATE	207,144	160,933	121,344	119,758	125,991	116,654	117,526	144,195	220,702	309,819	358,943
Downstate % of NYS	69.1	73.2	71.0	68.7	66.5	65.9	64.8	59.3	54.8	58.3	58.2

Source: New York State Department of Motor Vehicles.

TABLE 13
**MOTOR VEHICLE CRASHES
 INVOLVING MALE DRIVERS**

	1990	1991	1992	1993	1994	1995	1996	1997	1998	1999	2000
Bronx	20,642	18,255	17,668	16,559	16,444	16,655	15,819	16,169	16,388	22,432	25,181
Kings	41,950	39,325	39,424	38,784	38,450	38,190	36,046	36,384	38,247	44,968	47,744
New York	28,935	26,778	26,262	26,452	26,703	25,786	25,006	24,535	23,601	30,435	32,646
Queens	45,020	39,758	38,596	37,277	36,797	36,781	34,713	33,041	35,380	43,016	45,475
Richmond	7,301	6,633	6,518	6,058	5,756	5,951	5,826	5,658	5,913	6,375	6,751
NEW YORK CITY	143,848	130,749	128,468	125,130	124,150	123,363	117,410	115,787	119,529	147,226	157,797
Dutchess	5,157	4,379	4,101	3,970	4,293	3,923	4,402	4,433	5,377	6,003	6,452
Nassau	34,658	30,322	27,654	28,170	27,922	26,306	25,966	28,743	35,389	37,750	40,013
Orange	6,368	5,661	5,326	5,381	5,801	5,269	5,305	5,218	6,562	7,668	8,821
Putnam	2,031	1,754	1,554	1,594	1,827	1,519	1,679	1,746	1,875	2,093	2,577
Rockland	5,567	5,286	4,757	5,006	5,346	4,969	5,309	4,954	5,779	6,866	7,813
Suffolk	31,604	27,152	24,596	24,993	24,989	22,688	22,893	24,442	31,093	32,628	35,750
Westchester	17,177	15,192	13,791	13,976	16,618	13,757	14,384	14,334	16,323	17,508	19,181
NEW YORK SUBURBS	102,562	89,746	81,779	83,090	86,796	78,431	79,938	83,870	102,398	110,516	120,607
DOWNSTATE NY	246,410	220,495	210,247	208,220	210,946	201,794	197,348	199,657	221,927	257,742	278,404
NEW YORK STATE	341,620	302,459	285,612	285,176	289,381	278,164	273,882	283,794	326,323	379,303	411,996
Downstate % of NYS	72.1	72.9	73.6	73.0	72.9	72.5	72.1	70.4	68.0	68.0	67.6

Source: New York State Dept. of Motor Vehicles

TABLE 14
**MOTOR VEHICLE CRASHES
 INVOLVING FEMALE DRIVERS**

	1990	1991	1992	1993	1994	1995	1996	1997	1998	1999	2000
Bronx	5,658	5,229	5,337	5,064	4,836	5,125	5,027	5,086	5,495	7,273	8,107
Kings	11,629	10,840	10,773	10,624	10,481	10,922	10,434	11,080	11,691	14,054	14,965
New York	4,953	4,539	4,389	4,489	4,474	4,578	4,615	4,645	4,710	6,114	6,607
Queens	15,701	14,360	13,572	13,335	12,784	13,444	12,733	12,954	13,658	16,934	17,606
Richmond	3,864	3,613	3,637	3,466	3,280	3,565	3,442	3,469	3,585	3,757	4,109
NEW YORK CITY	41,805	38,581	37,708	36,978	35,855	37,634	36,251	37,234	39,139	48,132	51,394
Dutchess	3,621	3,117	2,970	2,942	3,060	2,984	3,139	3,225	3,888	4,262	4,482
Nassau	22,750	20,244	19,105	19,019	18,801	18,597	18,630	20,801	25,329	26,487	28,094
Orange	3,999	3,638	3,599	3,496	3,812	3,406	3,598	3,593	4,506	5,157	6,088
Putnam	1,204	1,103	1,059	1,070	1,103	1,035	1,091	1,171	1,219	1,324	1,530
Rockland	3,823	3,543	3,296	3,485	3,599	3,459	3,575	3,478	3,716	4,457	4,883
Suffolk	21,289	18,647	16,827	17,046	17,451	16,648	16,762	17,866	22,210	23,234	25,163
Westchester	11,337	10,171	9,523	9,459	9,573	9,319	9,717	9,948	11,409	11,986	12,798
NEW YORK SUBURBS	68,023	60,463	56,379	56,517	57,399	55,448	56,512	60,082	72,277	76,907	83,038
DOWNSTATE NY	109,828	99,044	94,087	93,495	93,254	93,082	92,763	97,316	111,416	125,039	134,432
NEW YORK STATE	172,795	154,618	146,794	146,955	148,439	147,956	148,723	158,181	184,806	208,410	227,235
Downstate % of NYS	63.6	64.1	64.1	63.6	62.8	62.9	62.4	61.5	60.3	60.0	59.2

Source: New York State Dept. of Motor Vehicles

TABLE 15
1990 MOTOR VEHICLE CRASHES
BY AGE OF FEMALE DRIVER

AGE	NY CITY	NY SUBURBS	NY METR. REGION	NY STATE
UNDER 18	612	2,571	3,183	6,063
18-20	2,765	6,874	9,639	16,500
21-24	4,686	8,230	12,916	20,809
25-29	6,498	9,175	15,673	24,543
30-39	11,088	14,825	25,913	40,017
40-49	7,799	11,680	19,479	28,870
50-59	4,128	6,677	10,805	15,957
60-64	1,423	2,739	4,162	6,327
65-69	1,042	2,050	3,092	5,016
70-74	636	1,389	2,025	3,584
75-79	361	944	1,305	2,411
80 AND OVER	156	540	696	1,493
UNSPECIFIED AGE	611	329	940	1,205
TOTAL	41,805	68,023	109,828	172,795

BY AGE OF MALE DRIVER

AGE	NY CITY	NY SUBURBS	NY METR. REGION	NY STATE
UNDER 18	1,937	4,180	6,117	10,490
18-20	9,034	10,730	19,764	30,276
21-24	15,951	12,755	28,706	40,584
25-29	23,839	14,946	38,785	52,047
30-39	37,945	21,681	59,626	80,019
40-49	23,250	14,512	37,762	50,997
50-59	13,731	9,489	23,220	31,571
60-64	5,028	4,430	9,458	13,076
65-69	3,636	3,488	7,124	10,250
70-74	2,269	2,399	4,668	7,210
75-79	1,385	1,500	2,885	4,614
80 AND OVER	971	1,096	2,067	3,405
UNSPECIFIED AGE	4,872	1,356	6,228	7,081
TOTAL	143,848	102,562	246,410	341,620

Source: New York State Dept. of Motor Vehicles

TABLE 16
1999 MOTOR VEHICLE CRASHES
BY AGE OF FEMALE DRIVER

AGE	NY CITY	NY SUBURBS	NY METR. REGION	NY STATE
UNDER 18	516	3,223	3,739	8,179
18-20	2,535	6,157	8,692	17,432
21-24	4,828	6,770	11,598	19,929
25-29	7,090	8,067	15,157	23,920
30-39	13,609	17,726	31,335	49,498
40-49	9,816	14,894	24,710	39,887
50-59	5,429	9,814	15,243	24,495
60-64	1,434	2,712	4,146	6,702
65-69	914	2,217	3,131	5,271
70-74	719	2,080	2,799	4,856
75-79	506	1,711	2,217	4,114
80 AND OVER	344	1,236	1,580	3,205
UNSPECIFIED AGE	392	300	692	922
TOTAL	48,132	76,907	125,039	208,410

BY AGE OF MALE DRIVER

AGE	NY CITY	NY SUBURBS	NY METR. REGION	NY STATE
UNDER 18	1,483	4,497	5,980	12,321
18-20	7,648	10,099	17,747	31,046
21-24	13,873	10,477	24,350	36,681
25-29	19,604	11,919	31,523	43,725
30-39	41,653	25,144	66,797	91,993
40-49	30,142	19,820	49,962	71,638
50-59	17,097	12,797	29,894	43,862
60-64	4,878	4,062	8,940	13,203
65-69	2,986	3,309	6,295	9,818
70-74	2,173	2,900	5,073	8,220
75-79	1,504	2,259	3,763	6,141
80 AND OVER	1,113	1,877	2,990	5,199
UNSPECIFIED AGE	3,072	1,356	4,428	5,456
TOTAL	147,226	110,516	257,742	379,303

Source: New York State Dept. of Motor Vehicles

TABLE 17
2000 MOTOR VEHICLE CRASHES
BY AGE OF FEMALE DRIVER

AGE	NY CITY	NY SUBURBS	NY METR. REGION	NY STATE
UNDER 18	523	3,431	3,954	8,989
18-20	2,816	7,095	9,911	20,320
21-24	5,165	7,470	12,635	22,582
25-29	7,404	8,188	15,592	24,782
30-39	14,518	18,994	33,512	52,999
40-49	10,642	16,631	27,273	44,631
50-59	5,887	10,498	16,385	26,695
60-64	1,422	2,912	4,334	7,043
65-69	924	2,304	3,228	5,377
70-74	756	2,172	2,928	5,102
75-79	513	1,693	2,206	4,161
80 AND OVER	381	1,369	1,750	3,604
UNSPECIFIED AGE	443	281	724	950
TOTAL	51,394	83,038	134,432	227,235

BY AGE OF MALE DRIVER

AGE	NY CITY	NY SUBURBS	NY METR. REGION	NY STATE
UNDER 18	1,488	5,024	6,512	13,503
18-20	8,257	11,223	19,480	34,553
21-24	15,411	11,735	27,146	40,872
25-29	20,957	12,728	33,685	46,929
30-39	44,179	26,932	71,111	97,883
40-49	32,962	22,225	55,187	79,109
50-59	18,432	14,419	32,851	48,918
60-64	5,224	4,390	9,614	14,319
65-69	3,149	3,411	6,560	10,229
70-74	2,196	2,962	5,158	8,469
75-79	1,462	2,233	3,695	6,326
80 AND OVER	1,200	2,051	3,251	5,724
UNSPECIFIED AGE	2,880	1,274	4,154	5,162
TOTAL	157,797	120,607	278,404	411,996

Source: New York State Dept. of Motor Vehicles

TABLE 18
VEHICULAR/PEDESTRIAN CRASHES
AT INTERSECTION

	1990	1991	1992	1993	1994	1995	1996	1997	1998	1999	2000
Bronx	1,662	1,704	1,673	1,475	1,484	1,473	1,384	1,356	1,296	1,190	1,169
Kings	3,420	3,244	3,216	3,257	3,023	3,059	2,936	2,909	2,939	2,708	2,761
New York	3,343	3,195	3,276	3,301	3,256	3,045	3,031	2,977	2,872	2,549	2,288
Queens	2,028	1,905	1,915	1,844	1,877	1,978	1,849	1,769	1,877	1,721	1,641
Richmond	189	189	196	243	206	209	214	188	165	202	183
NEW YORK CITY	10,642	10,237	10,276	10,120	9,846	9,764	9,414	9,199	9,149	8,370	8,042
Dutchess	43	42	37	29	35	43	38	45	42	41	34
Nassau	600	510	525	530	567	562	551	578	554	614	577
Orange	86	47	66	38	50	53	55	59	41	57	54
Putnam	7	8	9	7	13	10	7	5	4	6	7
Rockland	75	47	62	59	56	69	54	61	48	67	69
Suffolk	335	311	322	301	309	271	315	283	293	286	248
Westchester	371	387	363	411	331	335	322	362	367	370	368
NEW YORK SUBURBS	1,517 r	1,352 r	1,384 r	1,375 r	1,361	1,343	1,342	1,393	1,349	1,441	1,357
DOWNSTATE NY	12,159 r	11,589 r	11,660 r	11,495 r	11,207	11,107	10,756	10,592	10,498	9,811	9,399
NEW YORK STATE	13,831	13,054	13,157	12,888	12,665	12,500	12,070	11,794	11,705	11,020	10,580
Downstate % of NYS	87.9 r	88.8 r	88.6 r	89.2 r	88.5	88.9	89.1	89.8	89.7	89.0	88.8

Source: New York State Dept. of Motor Vehicles
r = revised

TABLE 19
VEHICULAR/PEDESTRIAN CRASHES
NOT AT INTERSECTION (MID-BLOCK)

	1990	1991	1992	1993	1994	1995	1996	1997	1998	1999	2000
Bronx	1,109	1,035	998	942	798	842	760	781	744	792	689
Kings	1,807	1,692	1,785	1,815	1,636	1,689	1,546	1,495	1,458	1,417	1,330
New York	1,405	1,367	1,439	1,279	1,312	1,356	1,291	1,193	1,227	1,088	1,191
Queens	1,155	1,155	1,215	1,061	1,001	983	1,082	930	983	1,019	900
Richmond	170	155	156	187	168	167	148	148	149	144	158
NEW YORK CITY	5,646	5,404	5,593	5,284	4,915	5,037	4,827	4,547	4,561	4,460	4,268
Dutchess	58	75	65	71	57	60	62	68	48	55	29
Nassau	534	482	479	484	495	464	417	448	462	418	447
Orange	107	118	77	95	136	101	81	83	64	100	99
Putnam	18	16	19	21	15	10	17	24	23	13	17
Rockland	99	79	87	77	106	101	84	98	79	84	81
Suffolk	452	434	401	457	416	378	345	353	317	342	345
Westchester	339	343	405	359	375	353	330	361	398	356	325
NEW YORK SUBURBS	1,607 r	1,547 r	1,533 r	1,564 r	1,600	1,467	1,336	1,435	1,391	1,368	1,343
DOWNSTATE NY	7,253 r	6,951 r	7,126 r	6,848 r	6,515	6,504	6,163	5,982	5,952	5,828	5,611
NEW YORK STATE	9,252	8,885	9,094	8,644	8,414	8,141	7,785	7,531	7,490	7,308	7,067
Downstate % of NYS	78.4 r	78.2 r	78.4 r	79.2 r	77.4	79.9	79.2	79.4	79.5	79.7	79.4

Source: New York State Dept. of Motor Vehicles
r = revised

TABLE 20
**TOTAL PEDESTRIAN FATALITIES
 IN VEHICULAR/PEDESTRIAN CRASHES**

	1990	1991	1992	1993	1994	1995	1996	1997	1998	1999	2000
Bronx	58	63	45	42	38	35	30	27	20	29	25
Kings	105	76	75	89	71	69	71	71	70	66	60
New York	93	65	65	62	60	65	56	54	42	37	50
Queens	73	66	68	67	52	57	49	66	48	48	38
Richmond	10	6	7	4	2	10	7	4	1	6	7
NEW YORK CITY	339	276	260	264	223	236	213	222	181	186	180
Dutchess	3	3	5	4	2	3	3	6	1	4	1
Nassau	47	30	44	25	31	31	17	31	34	47	28
Orange	8	9	6	5	3	4	3	6	2	8	1
Putnam	1	2	2	1	2	0	1	0	0	1	1
Rockland	5	6	4	3	8	4	1	4	3	8	4
Suffolk	41	44	43	44	23	42	29	25	43	34	33
Westchester	22	17	16	12	17	16	13	10	19	8	11
NEW YORK SUBURBS	127	111	120	94	86	100	67	82	102	110	79
DOWNSTATE NY	466	387	380	358	309	336	280	304	283	296	259
NEW YORK STATE	592	482	479	449	408	428	397	374	372	383	335
Downstate % of NYS	78.7	80.3	79.3	79.7	75.7	78.5	70.5	81.3	76.1	77.3	77.3

Source: New York State Dept. Of Motor Vehicles

TABLE 21
TOTAL BICYCLISTS KILLED OR INJURED

	1990	1991	1992	1993	1994	1995	1996	1997	1998	1999	2000
Bronx	472	499	516	621	598	715	703	728	615	501	510
Kings	1,225	1,352	1,415	1,591	1,608	1,932	1,935	1,856	1,741	1,461	1,329
New York	1,159	1,284	1,362	1,563	1,491	1,557	1,570	1,666	1,476	1,342	1,153
Queens	719	753	796	943	895	995	966	1,009	949	863	735
Richmond	131	143	147	116	117	132	132	145	136	107	97
NEW YORK CITY	3,706	4,031	4,236	4,834	4,709	5,331	5,306	5,404	4,917	4,274	3,824
Dutchess	74	83	87	75	76	67	65	71	60	46	64
Nassau	698	830	776	723	685	700	622	646	645	598	584
Orange	90	120	107	93	79	86	94	90	90	77	75
Putnam	9	14	10	11	14	11	7	8	5	13	5
Rockland	93	92	82	58	65	65	71	63	68	70	52
Suffolk	697	644	657	618	589	627	551	601	627	592	527
Westchester	204	260	244	253	225	251	239	211	234	213	180
NEW YORK SUBURBS	1,865	2,043	1,963	1,831	1,733	1,807	1,649	1,690	1,729	1,609	1,487
DOWNSTATE NY	5,571	6,074	6,199	6,665	6,442	7,138	6,955	7,094	6,646	5,883	5,311
NEW YORK STATE	8,150	8,691	8,516	9,068	8,538	9,341	9,118	9,189	8,671	7,828	7,095
Downstate % of NYS	68.4	69.9	72.8	73.5	75.5	76.4	76.3	77.2	76.6	75.2	74.9

Source: New York State Department of Motor Vehicles

TABLE 22
**TOTAL BICYCLIST FATALITIES
 IN VEHICULAR/BICYCLE CRASHES**

	1990	1991	1992	1993	1994	1995	1996	1997	1998	1999	2000
Bronx	0	4	3	1	0	2	2	3	6	5	0
Kings	4	14	2	6	5	6	3	10	4	11	8
New York	5	3	7	4	6	6	8	4	3	5	2
Queens	4	3	4	3	4	6	3	2	5	6	4
Richmond	0	0	1	0	0	0	0	1	0	0	1
NEW YORK CITY	13	24	17	14	15	20	16	20	18	27	15
Dutchess	0	1	1	0	1	0	0	1	3	0	0
Nassau	1	3	3	4	7	4	2	2	2	2	2
Orange	2	2	0	1	0	2	0	1	1	0	3
Putnam	0	0	1	0	0	0	0	0	0	0	0
Rockland	0	1	0	0	0	0	2	1	0	1	0
Suffolk	6	9	6	5	5	6	9	6	10	4	5
Westchester	1	1	1	2	1	2	0	0	0	1	1
NEW YORK SUBURBS	10	17	12	12	14	14	13	11	16	8	11
DOWNSTATE NY	23	41	29	26	29	34	29	31	34	35	26
NEW YORK STATE	39	74	50	42	47	51	44	49	53	45	38
Downstate % of NYS	59.0	55.4	58.0	61.9	61.7	66.7	65.9	63.3	64.2	77.8	68.4

Source: New York State Department of Motor Vehicles

TABLE 23
BRONX COUNTY
CRASHES ON ROAD SYSTEM BY JURISDICTION

	1991			1992			1993			1994			1995		
	Total Crashes	Fatal	Pers. Inj	Total Crashes	Fatal	Pers. Inj	Total Crashes	Fatal	Pers. Inj	Total Crashes	Fatal	Pers. Inj	Total Crashes	Fatal	Pers. Inj
Total	15,106	103	11,770	14,573	89	12,071	13,819	79	11,418	13,493	64	10,983	13,568	74	11,249
State Routes	10	0	8	21	0	19	39	0	30	35	0	28	36	0	26
County Routes	0	0	0	0	0	0	0	0	0	0	0	0	0	0	0
Town Routes	5	0	2	5	0	5	1	0	0	0	0	0	1	0	1
Municipal Streets	11,842	77	9,404	11,430	70	9,582	10,809	60	9,078	10,566	48	8,705	10,584	55	8,994
Parkways	992	7	741	815	8	639	775	8	596	711	6	567	705	6	542
Thruway	1	0	1	0	0	0	1	0	0	0	0	0	1	0	0
Other Interstate	2,251	19	1,611	2,234	11	1,790	2,167	11	1,699	2,159	10	1,669	2,203	13	1,673
Unspecified	5	0	3	68	0	36	27	0	15	22	0	14	38	0	13

	1996			1997			1998			1999			2000		
	Total Crashes	Fatal	Pers. Inj	Total Crashes	Fatal	Pers. Inj	Total Crashes	Fatal	Pers. Inj	Total Crashes	Fatal	Pers. Inj	Total Crashes	Fatal	Pers. Inj
Total	12,899	54	10,611	13,114	72	10,904	13,272	49	11,071	17,950	59	11,960	19,953	49	13,194
State Routes	26	0	21	44	0	37	18	0	13	41	0	25	27	0	18
County Routes	0	0	0	0	0	0	0	0	0	2	0	0	3	0	2
Town Routes	1	0	0	3	0	2	10	0	5	3	1	0	5	0	3
Municipal Streets	9,979	41	8,405	10,136	51	8,583	10,303	39	8,719	13,608	43	9,349	15,384	33	10,587
Parkways	723	3	574	729	9	564	731	2	590	911	5	582	930	4	567
Thruway	0	0	0	0	0	0	0	0	0	29	0	15	15	0	9
Other Interstate	2,138	10	1,600	2,177	12	1,713	2,197	8	1,739	3,347	10	1,984	3,547	12	1,982
Unspecified	32	0	11	25	0	5	13	0	5	9	0	5	42	0	26

Source: New York State Dept. of Motor Vehicles

TABLE 24
KINGS COUNTY
CRASHES ON ROAD SYSTEM BY JURISDICTION

	1991			1992			1993			1994			1995		
	Total Crashes	Fatal	Pers. Inj.	Total Crashes	Fatal	Pers. Inj.	Total Crashes	Fatal	Pers. Inj.	Total Crashes	Fatal	Pers. Inj.	Total Crashes	Fatal	Pers. Inj.
Total	31,441	164	24,993	31,360	143	26,425	30,922	142	26,438	30,485	117	26,252	30,129	117	26,286
State Routes	122	2	96	114	1	95	134	1	110	129	0	119	169	0	141
County Routes	2	0	1	0	0	0	0	0	0	1	0	1	0	0	0
Town Routes	11	0	7	1	0	0	2	0	1	6	0	5	1	0	1
Municipal Streets	28,652	148	22,906	28,736	123	24,357	28,308	128	24,274	27,792	104	23,998	27,350	104	23,970
Parkways	1,220	5	920	1,198	9	936	1,248	9	1,030	1,373	6	1,138	1,299	9	1,084
Thruway	1	0	0	0	0	0	0	0	0	2	0	1	0	0	0
Other Interstate	1,410	9	1,051	1,275	10	1,008	1,203	4	1,000	1,154	7	966	1,279	4	1,074
Unspecified	23	0	12	36	0	29	27	0	23	28	0	24	31	0	16

	1996			1997			1998			1999			2000		
	Total Crashes	Fatal	Pers. Inj.	Total Crashes	Fatal	Pers. Inj.	Total Crashes	Fatal	Pers. Inj.	Total Crashes	Fatal	Pers. Inj.	Total Crashes	Fatal	Pers. Inj.
Total	28,504	109	25,062	28,768	134	25,559	30,081	115	26,720	35,782	114	26,511	38,151	105	27,190
State Routes	119	1	99	109	3	95	88	1	79	102	1	81	125	0	94
County Routes	0	0	0	0	0	0	0	0	0	1	0	1	9	0	2
Town Routes	4	0	3	1	0	1	1	0	0	0	0	0	2	0	1
Municipal Streets	26,067	99	23,033	26,223	112	23,429	27,382	101	24,459	32,334	101	24,132	34,472	92	24,845
Parkways	1,147	5	969	1,275	9	1,078	1,303	11	1,099	1,562	9	1,169	1,697	10	1,183
Thruway	0	0	0	0	0	0	0	0	0	0	0	0	2	0	1
Other Interstate	1,161	4	953	1,148	10	950	1,280	2	1,071	1,746	3	1,104	1,817	3	1,045
Unspecified	6	0	5	12	0	6	27	0	12	37	0	24	27	0	19

Source: New York State Dept. of Motor Vehicles

TABLE 25
NEW YORK COUNTY
CRASHES ON ROAD SYSTEM BY JURISDICTION

	1991			1992			1993			1994			1995		
	Total Crashes	Fatal	Pers. Inj.	Total Crashes	Fatal	Pers. Inj.	Total Crashes	Fatal	Pers. Inj.	Total Crashes	Fatal	Pers. Inj.	Total Crashes	Fatal	Pers. Inj.
Total	20,603	95	15,917	20,098	88	16,787	20,317	99	17,088	20,382	82	16,913	19,694	96	16,250
State Routes	7	0	6	36	0	34	29	0	23	41	0	31	51	0	28
County Routes	1	0	0	1	0	1	0	0	0	0	0	0	2	0	2
Town Routes	5	0	2	3	0	3	1	0	1	1	0	1	3	0	3
Municipal Streets	18,040	81	14,159	17,844	76	14,981	18,087	81	15,345	18,056	70	15,228	17,298	83	14,541
Parkways	1,721	12	1,297	1,546	9	1,240	1,545	17	1,221	1,434	11	1,154	1,469	13	1,171
Thruway	1	0	0	2	0	2	1	0	1	3	0	2	0	0	0
Other Interstate	770	2	428	621	3	499	627	1	481	815	1	475	849	0	492
Unspecified	58	0	25	45	0	27	27	0	16	32	0	22	22	0	13

	1996			1997			1998			1999			2000		
	Total Crashes	Fatal	Pers. Inj.	Total Crashes	Fatal	Pers. Inj.	Total Crashes	Fatal	Pers. Inj.	Total Crashes	Fatal	Pers. Inj.	Total Crashes	Fatal	Pers. Inj.
Total	19,219	84	15,825	18,731	81	15,711	18,176	59	15,243	22,956	66	14,679	24,609	70	14,624
State Routes	40	0	26	40	0	26	37	1	23	56	0	31	77	0	36
County Routes	1	0	0	0	0	0	0	0	0	0	0	0	13	0	3
Town Routes	3	0	3	0	0	0	2	0	0	2	0	2	4	0	3
Municipal Streets	16,805	73	14,128	16,671	67	14,168	16,085	51	13,630	20,297	53	13,078	21,738	60	12,929
Parkways	1,516	9	1,212	1,428	13	1,146	1,537	7	1,230	1,863	13	1,227	2,150	10	1,349
Thruway	0	0	0	0	0	0	2	0	1	3	0	2	0	0	0
Other Interstate	841	2	448	575	1	363	503	0	355	723	0	331	608	0	291
Unspecified	13	0	8	17	0	8	10	0	4	12	0	8	19	0	13

Source: New York State Dept. of Motor Vehicles

**TABLE 26
QUEENS COUNTY
CRASHES ON ROAD SYSTEM BY JURISDICTION**

	1991			1992			1993			1994			1995		
	Total Crashes	Fatal	Pers. Inj.	Total Crashes	Fatal	Pers. Inj.	Total Crashes	Fatal	Pers. Inj.	Total Crashes	Fatal	Pers. Inj.	Total Crashes	Fatal	Pers. Inj.
Total	32,233	156	22,778	30,898	170	23,733	29,905	140	23,299	29,302	133	23,049	29,243	132	23,461
State Routes	16	0	12	124	0	91	55	0	42	31	1	24	46	0	34
County Routes	1	0	0	1	0	0	1	0	0	1	0	1	0	0	0
Town Routes	5	0	2	4	0	2	2	0	1	3	1	1	1	0	1
Municipal Streets	26,292	131	18,636	24,985	142	19,267	24,128	118	18,843	23,765	105	18,727	23,792	106	19,165
Parkways	2,827	10	2,011	2,797	13	2,109	2,708	11	2,098	2,614	13	2,042	2,555	9	2,036
Thruway	0	0	0	0	0	0	0	0	0	0	0	0	0	0	0
Other Interstate	3,043	15	2,099	2,894	15	2,220	2,936	11	2,288	0	0	0	0	0	0
Unspecified	49	0	18	93	0	44	75	0	27	2,830	12	2,224	2,820	17	2,212
										58	1	30	29	0	13

	1996			1997			1998			1999			2000		
	Total Crashes	Fatal	Pers. Inj.	Total Crashes	Fatal	Pers. Inj.	Total Crashes	Fatal	Pers. Inj.	Total Crashes	Fatal	Pers. Inj.	Total Crashes	Fatal	Pers. Inj.
Total	27,703	116	22,205	26,690	123	21,849	28,274	112	23,160	34,697	118	23,875	36,578	100	24,459
State Routes	35	0	26	32	0	25	22	0	15	58	1	31	63	0	42
County Routes	0	0	0	0	0	0	1	0	0	1	0	0	8	0	4
Town Routes	1	0	1	1	0	1	3	0	3	3	0	1	3	0	3
Municipal Streets	22,510	93	18,131	21,709	96	17,832	22,807	86	18,819	27,711	92	19,229	29,315	75	19,780
Parkways	2,385	10	1,899	2,384	12	1,968	2,550	10	2,064	3,394	13	2,342	3,627	13	2,436
Thruway	1	0	0	1	0	0	0	0	0	2	0	1	2	0	2
Other Interstate	2,756	13	2,139	2,538	15	2,014	2,850	16	2,245	3,498	12	2,259	3,522	12	2,173
Unspecified	15	0	9	25	0	9	41	0	14	30	0	12	38	0	19

Source: New York State Dept. of Motor Vehicles

TABLE 27
RICHMOND COUNTY
CRASHES ON ROAD SYSTEM BY JURISDICTION

	1991			1992			1993			1994			1995		
	Total Crashes	Fatal	Pers. Inj	Total Crashes	Fatal	Pers. Inj	Total Crashes	Fatal	Pers. Inj	Total Crashes	Fatal	Pers. Inj	Total Crashes	Fatal	Pers. Inj
Total	5,883	28	4,272	5,822	20	4,486	5,469	17	4,304	5,171	23	4,036	5,361	19	4,188
State Routes	109	1	75	94	2	71	93	2	70	101	0	84	109	3	69
County Routes	0	0	0	0	0	0	0	0	0	1	0	0	0	0	0
Town Routes	1	0	0	1	0	0	0	0	0	1	0	1	2	0	1
Municipal Streets	5,240	21	3,826	5,242	18	4,028	4,900	14	3,851	4,616	22	3,592	4,659	15	3,667
Parkways	16	1	11	20	0	18	9	0	6	16	0	12	9	0	6
Thruway	1	0	1	0	0	0	0	0	0	0	0	0	0	0	0
Other Interstate	488	5	348	448	0	359	440	1	365	427	1	344	569	1	439
Unspecified	28	0	11	17	0	10	27	0	12	9	0	3	13	0	6
	1996			1997			1998			1999			2000		
	Total Crashes	Fatal	Pers. Inj	Total Crashes	Fatal	Pers. Inj	Total Crashes	Fatal	Pers. Inj	Total Crashes	Fatal	Pers. Inj	Total Crashes	Fatal	Pers. Inj
Total	5,268	17	4,244	5,125	14	4,133	5,318	22	4,204	5,781	15	3,808	6,258	24	3,805
State Routes	119	0	96	75	1	55	109	2	85	127	1	70	97	1	50
County Routes	0	0	0	0	0	0	0	0	0	1	0	0	0	0	0
Town Routes	0	0	0	1	0	1	0	0	0	1	0	1	0	0	0
Municipal Streets	4,543	16	3,672	4,529	12	3,656	4,696	16	3,724	4,952	12	3,344	5,307	20	3,315
Parkways	30	0	24	49	0	43	46	2	32	30	1	14	42	0	23
Thruway	1	0	0	0	0	0	0	0	0	1	0	1	1	0	1
Other Interstate	562	1	445	460	1	373	456	2	357	663	1	375	796	3	411
Unspecified	13	0	7	11	0	5	11	0	6	6	0	3	15	0	5

Source: New York State Dept. of Motor Vehicles

TABLE 28
NEW YORK CITY
CRASHES ON ROAD SYSTEM BY JURISDICTION

	1991			1992			1993			1994			1995		
	Total Crashes	Fatal	Pers. Inj	Total Crashes	Fatal	Pers. Inj	Total Crashes	Fatal	Pers. Inj	Total Crashes	Fatal	Pers. Inj.	Total Crashes	Fatal	Pers. Inj.
Total	105,266	546	79,730	102,751	510	83,502	100,432	477	82,547	98,833	419	81,233	97,995	438	81,434
State Routes	264	3	197	389	3	310	350	3	275	337	1	286	411	3	298
County Routes	4	0	1	2	0	1	1	0	0	3	0	2	2	0	2
Town Routes	27	0	13	14	0	10	6	0	3	11	1	8	8	0	7
Municipal Streets	90,066	458	68,931	88,237	429	72,215	86,232	401	71,391	84,795	349	70,250	83,683	363	70,337
Parkways	6,776	35	4,980	6,376	39	4,942	6,285	45	4,951	6,148	36	4,913	6,037	37	4,839
Thruway	4	0	2	2	0	2	2	0	1	5	0	3	1	0	0
Other Interstate	7,962	50	5,537	7,472	39	5,876	7,373	28	5,833	7,385	31	5,678	7,720	35	5,890
Unspecified	163	0	69	259	0	146	183	0	93	149	1	93	133	0	61

	1996			1997			1998			1999			2000		
	Total Crashes	Fatal	Pers. Inj	Total Crashes	Fatal	Pers. Inj	Total Crashes	Fatal	Pers. Inj	Total Crashes	Fatal	Pers. Inj.	Total Crashes	Fatal	Pers. Inj
Total	93,593	380	77,947	92,428	424	78,156	95,121	357	80,398	117,166	372	80,831	125,549	348	83,272
State Routes	339	1	268	300	4	238	274	4	215	384	3	238	389	1	240
County Routes	1	0	0	0	0	0	1	0	0	5	0	1	33	0	11
Town Routes	9	0	7	6	0	5	16	0	8	9	1	4	14	0	10
Municipal Streets	79,904	322	67,369	79,268	338	67,668	81,273	293	69,351	98,902	301	69,130	106,216	280	71,456
Parkways	5,801	27	4,678	5,865	43	4,799	6,167	32	5,015	7,760	41	5,334	8,446	37	5,558
Thruway	2	0	0	1	0	0	2	0	1	35	0	19	20	0	13
Other Interstate	7,458	30	5,585	6,898	39	5,413	7,286	28	5,767	9,977	26	6,053	10,290	30	5,902
Unspecified	79	0	40	90	0	33	102	0	41	94	0	52	141	0	82

Source: New York State Dept. of Motor Vehicles

TABLE 29
DUTCHESS COUNTY
CRASHES ON ROAD SYSTEM BY JURISDICTION

	1991			1992			1993			1994			1995		
	Total Crashes	Fatal	Pers. Inj.	Total Crashes	Fatal	Pers. Inj.	Total Crashes	Fatal	Pers. Inj.	Total Crashes	Fatal	Pers. Inj.	Total Crashes	Fatal	Pers. Inj.
Total	4,467	35	2,739	4,207	25	2,742	4,097	34	2,733	4,320	30	2,851	4,116	30	2,800
State Routes	2,250	23	1,389	2,164	13	1,442	2,127	18	1,421	2,239	17	1,539	2,025	14	1,408
County Routes	691	5	457	734	6	478	666	8	434	652	3	421	724	5	510
Town Routes	588	4	361	533	3	329	519	5	339	549	1	331	573	2	358
Municipal Streets	556	0	357	459	0	328	491	1	369	487	1	345	449	3	332
Parkways	181	3	83	215	2	109	198	0	115	226	5	118	221	5	120
Thruway	2	0	2	1	0	1	0	0	0	2	0	1	1	0	1
Other Interstate	163	0	85	84	1	49	80	2	52	134	3	88	110	1	68
Unspecified	36	0	5	17	0	6	16	0	3	31	0	8	13	0	3

	1996			1997			1998			1999			2000		
	Total Crashes	Fatal	Pers. Inj.	Total Crashes	Fatal	Pers. Inj.	Total Crashes	Fatal	Pers. Inj.	Total Crashes	Fatal	Pers. Inj.	Total Crashes	Fatal	Pers. Inj.
Total	4,512	22	2,900	4,731	31	2,829	5,815	27	2,646	6,577	29	2,818	7,041	29	2,755
State Routes	2,283	11	1,520	2,384	17	1,464	2,963	11	1,397	3,262	16	1,467	3,449	14	1,427
County Routes	713	2	467	801	5	461	1,033	8	450	1,152	5	470	1,190	10	453
Town Routes	580	1	347	563	2	327	743	5	302	832	2	324	991	4	371
Municipal Streets	523	2	360	547	1	377	561	2	325	605	1	338	641	0	294
Parkways	247	6	122	270	4	111	294	1	89	424	2	129	425	1	114
Thruway	0	0	0	1	0	1	3	0	1	5	0	1	4	0	0
Other Interstate	143	0	80	135	2	76	151	0	65	211	3	71	265	0	81
Unspecified	23	0	4	30	0	12	67	0	17	86	0	18	76	0	15

Source: New York State Dept. of Motor Vehicles

TABLE 30
NASSAU COUNTY
CRASHES ON ROAD SYSTEM BY JURISDICTION

	1991			1992			1993			1994			1995		
	Total	Fatal	Pers. Inj	Total	Fatal	Pers. Inj	Total	Fatal	Pers. Inj	Total	Fatal	Pers. Inj	Total	Fatal	Pers. Inj
Total	27,715	118	17,200	25,492	122	17,388	25,426	104	17,528	25,333	107	17,418	24,196	101	16,997
State Routes	6,451	32	4,133	6,024	29	4,236	5,836	30	4,135	5,809	30	4,054	5,470	27	3,970
County Routes	10,990	34	7,021	7,027	19	4,934	12	0	10	27	0	21	48	0	38
Town Routes	3,434	8	1,862	4,803	35	3,052	8,737	35	5,876	8,994	34	6,137	8,621	39	5,895
Municipal Streets	2,757	17	1,655	3,953	23	2,692	7,107	16	4,966	6,890	26	4,770	6,995	23	4,988
Parkways	3,006	23	1,948	2,821	14	1,967	2,842	18	1,986	2,694	14	1,874	2,190	9	1,558
Thruway	1	0	1	1	0	0	2	0	1	3	0	1	4	0	3
Other Interstate	777	4	517	661	2	441	736	5	515	714	3	497	690	3	496
Unspecified	299	0	63	202	0	66	154	0	39	202	0	64	178	0	49

	1996			1997			1998			1999			2000		
	Total	Fatal	Pers. Inj	Total	Fatal	Pers. Inj	Total	Fatal	Pers. Inj	Total	Fatal	Pers. Inj	Total	Fatal	Pers. Inj
Total	23,951	75	16,884	26,598	112	16,828	33,100	101	16,933	35,212	123	16,681	37,716	94	17,304
State Routes	5,416	20	3,916	5,898	31	3,818	7,010	21	3,757	7,704	33	3,749	8,346	33	3,999
County Routes	21	0	13	22	1	10	35	0	22	82	0	33	105	0	57
Town Routes	8,455	25	5,819	9,776	44	5,867	12,678	39	6,089	13,035	46	5,751	13,875	26	5,911
Municipal Streets	6,751	15	4,856	7,354	20	4,724	8,959	20	4,760	9,503	21	4,745	10,135	22	4,893
Parkways	2,367	14	1,708	2,496	13	1,801	3,384	20	1,808	3,757	23	1,887	4,018	8	1,903
Thruway	5	0	3	3	0	2	4	0	1	1	0	1	8	0	2
Other Interstate	757	1	532	888	3	558	894	1	446	964	0	470	1,081	5	500
Unspecified	179	0	37	161	0	48	136	0	50	166	0	45	148	0	39

Source: New York State Dept. of Motor Vehicles

65

TABLE 31
ORANGE COUNTY
CRASHES ON ROAD SYSTEM BY JURISDICTION

	1991			1992			1993			1994			1995		
	Total Crashes	Fatal	Pers. Inj	Total Crashes	Fatal	Pers. Inj	Total Crashes	Fatal	Pers. Inj	Total Crashes	Fatal	Pers. Inj	Total Crashes	Fatal	Pers. Inj
Total	5,690	39	3,718	5,370	42	3,801	5,301	38	3,731	5,686	47	3,829	5,260	35	3,631
State Routes	2,791	23	1,819	2,540	25	1,808	2,551	23	1,827	2,707	26	1,896	2,387	19	1,672
County Routes	702	6	491	727	5	515	627	5	440	678	7	448	682	4	464
Town Routes	648	3	432	656	5	458	690	6	458	671	6	423	717	7	493
Municipal Streets	1,103	3	719	1,036	2	749	999	1	736	1,134	1	757	1,010	1	731
Parkways	34	0	22	41	0	28	46	1	22	22	1	13	32	0	20
Thruway	194	2	120	176	4	114	164	1	114	196	3	135	181	2	100
Other Interstate	158	2	97	149	1	111	162	1	116	229	3	148	224	2	140
Unspecified	60	0	18	45	0	18	62	0	18	49	0	9	27	0	11

	1996			1997			1998			1999			2000		
	Total Crashes	Fatal	Pers. Inj	Total Crashes	Fatal	Pers. Inj	Total Crashes	Fatal	Pers. Inj	Total Crashes	Fatal	Pers. Inj	Total Crashes	Fatal	Pers. Inj
Total	5,404	37	3,674	5,528	39	3,324	6,866	31	3,364	8,204	43	3,511	9,604	30	3,662
State Routes	2,515	16	1,784	2,435	18	1,501	3,223	19	1,617	3,776	25	1,648	4,317	15	1,726
County Routes	713	8	478	766	7	457	837	6	431	1,060	2	465	1,114	6	435
Town Routes	615	5	402	705	6	420	874	1	395	1,156	5	435	1,410	4	489
Municipal Streets	995	1	684	1,074	5	671	1,280	3	655	1,429	5	688	1,836	0	723
Parkways	51	0	31	38	0	22	35	0	17	50	1	18	60	0	17
Thruway	197	2	124	196	1	100	270	1	115	352	3	107	385	1	117
Other Interstate	249	5	148	229	2	125	271	1	116	337	2	138	401	4	142
Unspecified	69	0	23	85	0	28	76	0	18	44	0	12	81	0	13

Source: New York State Dept. of Motor Vehicles

**TABLE 32
PUTNAM COUNTY
CRASHES ON ROAD SYSTEM BY JURISDICTION**

	1991			1992			1993			1994			1995		
	Total Crashes	Fatal	Pers. Inj	Total Crashes	Fatal	Pers. Inj	Total Crashes	Fatal	Pers. Inj	Total Crashes	Fatal	Pers. Inj	Total Crashes	Fatal	Pers. Inj.
Total	1,738	13	1,053	1,598	10	998	1,629	13	1,046	1,744	16	1,075	1,545	12	960
State Routes	812	7	507	757	6	486	776	3	493	878	10	578	790	7	505
County Routes	292	2	185	307	2	191	302	7	207	273	2	169	253	2	177
Town Routes	283	1	161	265	1	167	258	2	157	273	1	154	255	0	149
Municipal Streets	10	0	5	8	0	2	10	0	3	26	0	14	9	0	4
Parkways	169	2	105	129	1	73	149	1	102	140	2	82	94	0	52
Thruway	3	0	0	0	0	0	3	0	0	0	0	0	0	0	0
Other Interstate	164	1	90	130	0	78	130	0	84	146	1	78	135	3	70
Unspecified	5	0	0	2	0	1	1	0	0	8	0	0	9	0	3

	1996			1997			1998			1999			2000		
	Total Crashes	Fatal	Pers. Inj	Total Crashes	Fatal	Pers. Inj	Total Crashes	Fatal	Pers. Inj	Total Crashes	Fatal	Pers. Inj	Total Crashes	Fatal	Pers. Inj
Total	1,688	16	1,030	1,773	13	1,033	1,936	12	910	2,141	15	954	2,649	10	959
State Routes	778	9	513	874	4	537	910	3	463	848	10	409	1,208	7	486
County Routes	296	2	194	305	4	195	344	2	183	382	2	184	397	1	160
Town Routes	283	0	155	245	0	139	291	3	131	370	1	181	464	1	158
Municipal Streets	15	0	6	32	0	11	23	0	13	21	0	9	35	0	10
Parkways	164	4	87	137	2	57	182	0	50	222	1	81	242	0	63
Thruway	0	0	0	0	0	0	0	0	0	0	0	0	0	0	0
Other Interstate	140	1	75	174	3	93	173	4	66	284	1	86	288	1	80
Unspecified	12	0	0	6	0	1	13	0	4	14	4	4	15	0	2

Source: New York State Dept. of Motor Vehicles

TABLE 33
ROCKLAND COUNTY
CRASHES ON ROAD SYSTEM BY JURISDICTION

	1991			1992			1993			1994			1995		
	Total Crashes	Fatal	Pers. Inj	Total Crashes	Fatal	Pers. Inj	Total Crashes	Fatal	Pers. Inj	Total Crashes	Fatal	Pers. Inj	Total Crashes	Fatal	Pers. Inj
Total	4,917	18	3,176	4,486	14	3,041	4,641	19	3,153	4,969	25	3,305	4,722	20	3,162
State Routes	1,882	9	1,288	1,774	7	1,230	1,857	10	1,324	1,805	7	1,273	1,761	5	1,244
County Routes	989	5	630	881	3	626	889	3	615	952	5	651	842	6	546
Town Routes	858	3	524	736	0	459	772	3	487	843	2	493	908	4	559
Municipal Streets	463	0	309	423	1	306	434	1	303	496	4	345	506	1	362
Parkways	321	1	187	315	2	185	305	1	189	387	2	250	338	4	206
Thruway	376	0	232	335	1	227	355	1	229	445	5	278	332	0	233
Other Interstate	0	0	0	0	0	0	0	0	0	2	0	0	13	0	5
Unspecified	28	0	6	22	0	8	29	0	6	39	0	15	22	0	7
	1996			1997			1998			1999			2000		
	Total Crashes	Fatal	Pers. Inj	Total Crashes	Fatal	Pers. Inj	Total Crashes	Fatal	Pers. Inj	Total Crashes	Fatal	Pers. Inj	Total Crashes	Fatal	Pers. Inj
Total	4,935	14	3,206	4,748	26	2,998	5,279	26	2,849	6,396	22	2,930	7,262	18	3,160
State Routes	1,781	8	1,265	1,806	11	1,183	1,986	11	1,176	2,216	13	1,119	2,534	6	1,219
County Routes	936	1	593	810	4	514	861	2	484	1,024	3	470	1,002	3	469
Town Routes	883	1	504	830	3	489	883	4	447	1,089	0	454	1,265	0	522
Municipal Streets	543	1	365	542	1	354	608	2	320	653	2	322	761	2	353
Parkways	370	2	215	350	4	219	355	3	191	585	3	255	728	2	260
Thruway	394	1	256	380	3	226	558	4	224	791	1	298	893	5	312
Northway	0	0	0	0	0	0	0	0	0	1	0	1	0	0	0
Other Interstate	9	0	3	6	0	4	3	0	1	5	0	2	10	0	2
Unspecified	19	0	5	24	0	9	25	0	6	32	0	9	69	0	23

Source: New York State Dept. of Motor Vehicles

TABLE 34
SUFFOLK COUNTY
CRASHES ON ROAD SYSTEM BY JURISDICTION

	1991			1992			1993			1994			1995		
	Total Crashes	Fatal	Pers. Inj	Total Crashes	Fatal	Pers. Inj	Total Crashes	Fatal	Pers. Inj	Total Crashes	Fatal	Pers. Inj.	Total Crashes	Fatal	Pers. Inj.
Total	25,511	186	16,562	22,998	174	15,969	23,319	181	16,486	23,388	146	16,437	21,630	166	15,483
State Routes	8,994	69	5,875	8,236	65	5,687	8,125	60	5,744	8,127	45	5,739	7,573	52	5,356
County Routes	5,927	58	4,065	5,352	49	3,893	5,382	50	3,973	5,197	45	3,892	4,790	41	3,603
Town Routes	7,952	44	5,107	7,074	44	4,875	7,411	53	5,165	7,612	40	5,196	7,024	51	4,997
Municipal Streets	887	4	513	838	2	545	796	4	535	841	3	535	796	6	542
Parkways	708	6	454	698	7	493	801	10	558	799	7	568	705	10	520
Thruway	1	0	1	1	0	1	3	0	3	0	0	0	2	0	2
Other Interstate	802	5	484	594	7	396	677	4	470	657	6	454	567	6	399
Unspecified	240	0	63	205	0	79	124	0	38	155	0	53	173	0	64

	1996			1997			1998			1999			2000		
	Total Crashes	Fatal	Pers. Inj	Total Crashes	Fatal	Pers. Inj	Total Crashes	Fatal	Pers. Inj	Total Crashes	Fatal	Pers. Inj	Total Crashes	Fatal	Pers. Inj
Total	21,732	153	15,602	23,261	147	14,656	29,642	162	14,974	31,407	153	14,621	34,854	151	15,233
State Routes	7,643	54	5,497	8,084	48	5,110	10,053	54	5,134	10,596	61	5,023	11,510	50	5,225
County Routes	4,890	45	3,722	5,483	48	3,670	6,851	40	3,756	7,279	44	3,661	7,838	43	3,710
Town Routes	6,984	41	4,898	7,422	41	4,484	9,871	43	4,710	10,222	32	4,505	11,785	46	4,782
Municipal Streets	796	4	532	856	3	485	1,121	7	475	1,325	1	500	1,437	2	512
Parkways	665	4	476	616	3	429	693	9	391	886	9	451	1,040	6	489
Thruway	0	0	0	0	0	0	0	0	0	1	0	1	2	0	0
Northway	0	0	0	0	0	0	0	0	0	2	0	2	0	0	0
Other Interstate	623	5	437	689	4	442	901	9	478	945	6	447	1,044	4	455
Unspecified	131	0	40	111	0	36	152	0	30	151	0	31	198	0	60

Source: New York State Dept. of Motor Vehicles

TABLE 35
WESTCHESTER COUNTY

CRASHES ON ROAD SYSTEM BY JURISDICTION

	1991			1992			1993			1994			1995		
	Total Crashes	Fatal	Pers. Inj.	Total Crashes	Fatal	Pers. Inj.	Total Crashes	Fatal	Pers. Inj.	Total Crashes	Fatal	Pers. Inj.	Total Crashes	Fatal	Pers. Inj.
Total	14,754	73	8,669	13,573	65	8,739	13,673	57	8,440	14,072	53	8,884	13,502	65	8,683
State Routes	4,086	20	2,380	3,904	24	2,483	3,941	20	2,501	4,047	18	2,589	3,847	27	2,492
County Routes	2,072	10	1,215	1,625	1	1,035	1,501	4	988	1,392	9	906	1,345	6	890
Town Routes	1,145	5	603	1,066	3	630	1,050	4	323	1,135	4	667	1,052	4	607
Municipal Routes	4,309	12	2,556	4,099	16	2,719	4,169	12	2,710	4,535	11	2,862	4,316	11	2,759
Parkways	1,729	19	1,116	1,721	13	1,111	1,780	13	1,176	1,669	5	1,101	1,671	10	1,144
Thruway	667	7	435	542	5	395	576	2	408	600	2	387	614	5	434
Other Interstate	634	0	350	518	3	332	545	2	313	562	4	338	524	2	311
Unspecified	112	0	14	98	0	34	111	0	21	132	0	34	133	0	46

	1996			1997			1998			1999			2000		
	Total Crashes	Fatal	Pers. Inj.	Total Crashes	Fatal	Pers. Inj.	Total Crashes	Fatal	Pers. Inj.	Total Crashes	Fatal	Pers. Inj.	Total Crashes	Fatal	Pers. Inj.
Total	13,992	63	8,822	14,097	54	8,577	16,310	52	8,646	17,452	51	8,409	19,153	56	8,672
State Routes	4,001	20	2,546	4,219	21	2,551	4,836	13	2,502	5,175	16	2,389	5,421	20	2,399
County Routes	1,321	2	889	1,226	5	781	1,374	3	823	1,213	4	691	1,126	3	595
Town Routes	1,076	5	568	1,149	1	588	1,351	4	561	1,572	7	587	1,866	4	655
Municipal Routes	4,349	12	2,767	4,078	9	2,653	4,551	13	2,878	4,896	12	2,899	5,277	6	2,941
Parkways	1,798	18	1,178	2,005	10	1,194	2,420	11	1,103	2,445	6	1,019	2,942	14	1,232
Thruway	733	2	506	644	2	407	710	6	357	946	2	452	1,058	4	379
Northway	0	0	0	0	0	0	0	0	0	1	0	1	0	0	0
Other Interstate	575	4	332	628	6	358	846	2	351	990	3	335	1,252	5	430
Unspecified	139	0	36	148	0	45	222	0	71	214	1	36	211	0	41

Source: New York State Dept. of Motor Vehicles

TABLE 36
NEW YORK SUBURBS

CRASHES ON ROAD SYSTEM BY JURISDICTION

	1991			1992			1993			1994			1995		
	Total	Fatal	Pers. Inj.	Total	Fatal	Pers. Inj.	Total	Fatal	Pers. Inj.	Total	Fatal	Pers. Inj.	Total	Fatal	Pers. Inj.
Total	84,792	482	53,117	77,723	452	52,678	78,086	446	53,117	79,512	424	53,799	74,971	429	51,716
State Routes	27,266	183	17,391	25,399	169	17,372	25,213	164	17,445	25,612	153	17,668	23,853	151	16,647
County Routes	21,663	120	14,064	16,653	85	11,672	9,379	77	6,667	9,171	71	6,508	8,684	64	6,228
Town Routes	14,908	68	9,050	15,132	91	9,970	19,437	108	12,805	20,077	88	13,401	19,150	107	13,058
Municipal Streets	10,085	36	6,114	10,816	44	7,341	14,006	35	9,622	14,409	46	9,628	14,081	45	9,718
Parkways	6,148	54	3,915	5,940	39	3,966	6,121	44	4,148	5,937	36	4,006	5,251	38	3,620
Thruway	1,244	9	791	1,056	10	738	1,103	4	755	1,246	10	802	1,134	7	773
Other Interstate	2,698	12	1,623	2,136	14	1,407	2,330	14	1,550	2,444	20	1,603	2,263	17	1,489
Unspecified	780	0	169	591	0	212	497	0	125	616	0	183	555	0	183

	1996			1997			1998			1999			2000		
	Total	Fatal	Pers. Inj.	Total	Fatal	Pers. Inj.	Total	Fatal	Pers. Inj.	Total	Fatal	Pers. Inj.	Total	Fatal	Pers. Inj.
Total	76,214	380	52,118	80,736	422	50,245	98,948	411	50,322	107,389	436	49,924	118,279	388	51,745
State Routes	24,417	138	17,041	25,700	150	16,164	30,981	132	16,046	33,577	174	15,804	36,785	145	16,481
County Routes	8,890	60	6,356	9,413	74	6,088	11,335	61	6,149	12,192	60	5,974	12,772	66	5,879
Town Routes	18,876	78	12,693	20,690	97	12,314	26,691	99	12,635	28,276	93	12,237	31,656	85	12,888
Municipal Streets	13,972	35	9,570	14,483	39	9,275	17,103	47	9,426	18,432	42	9,501	20,122	32	9,726
Parkways	5,662	48	3,817	5,912	36	3,833	7,363	44	3,649	8,369	45	3,840	9,455	31	4,078
Thruway	1,329	5	889	1,224	6	736	1,545	11	698	2,096	6	860	2,350	10	810
Nor hwy	0	0	0	0	0	0	0	0	0	4	0	4	0	0	0
Other Interstate	2,496	16	1,607	2,749	20	1,656	3,239	17	1,523	3,736	15	1,549	4,341	19	1,690
Unspecified	572	0	145	565	0	179	691	0	196	707	1	155	798	0	193

Source: New York State Dept. of Motor Vehicles

TABLE 37
DOWNSTATE NEW YORK
CRASHES ON ROAD SYSTEM BY JURISDICTION

	1991			1992			1993			1994			1995		
	Total	Fatal	Pers. Inj.	Total	Fatal	Pers. Inj.	Total	Fatal	Pers. Inj.	Total	Fatal	Pers. Inj.	Total	Fatal	Pers. Inj.
Total	190,058	1,028	132,847	180,474	962	136,180	178,518	923	135,664	178,345	843	135,032	172,966	867	133,150
Crashes															
State Routes	27,530	186	17,588	25,788	172	17,682	25,563	167	17,720	25,949	154	17,954	24,264	154	16,945
County Routes	21,667	120	14,065	16,655	85	11,673	9,380	77	6,667	9,174	71	6,510	8,686	64	6,230
Town Routes	14,935	68	9,063	15,146	91	9,980	19,443	108	12,808	20,088	89	13,409	19,158	107	13,065
Municipal Streets	100,151	494	75,045	99,053	473	79,556	100,238	436	81,013	99,204	395	79,878	97,764	408	80,055
Parkways	12,924	89	8,895	12,316	78	8,908	12,406	89	9,099	12,085	72	8,919	11,288	75	8,459
Thruway	1,248	9	793	1,058	10	740	1,105	4	756	1,251	10	805	1,135	7	773
Other Interstate	10,660	62	7,160	9,608	53	7,283	9,703	42	7,383	9,829	51	7,281	9,983	52	7,379
Unspecified	943	0	238	850	0	358	680	0	218	765	1	276	688	0	244

	1996			1997			1998			1999			2000		
	Total	Fatal	Pers. Inj.	Total	Fatal	Pers. Inj.	Total	Fatal	Pers. Inj.	Total	Fatal	Pers. Inj.	Total	Fatal	Pers. Inj.
Total	169,807	760	130,065	173,164	846	128,401	194,069	768	130,720	224,555	808	130,755	243,828	736	135,017
Crashes															
State Routes	24,756	139	17,309	26,000	154	16,402	31,255	136	16,261	33,961	177	16,042	37,174	146	16,721
County Routes	8,891	60	6,356	9,413	74	6,088	11,336	61	6,149	12,197	60	5,975	12,805	66	5,890
Town Routes	18,885	78	12,700	20,696	97	12,319	26,707	99	12,643	28,285	94	12,241	31,670	85	12,898
Municipal Streets	93,876	357	76,939	93,751	377	76,943	98,376	340	78,777	117,334	343	78,631	126,338	312	81,182
Parkways	11,463	75	8,495	11,777	79	8,632	13,530	76	8,664	16,129	86	9,174	17,901	68	9,636
Thruway	1,331	5	889	1,225	6	736	1,547	11	699	2,131	6	879	2,370	10	823
Northway	0	0	0	0	0	0	0	0	0	4	0	4	0	0	0
Other Interstate	9,954	46	7,192	9,647	59	7,069	10,525	45	7,290	13,713	41	7,602	14,631	49	7,592
Unspecified	651	0	185	655	0	212	793	0	237	801	1	207	939	0	275

Source: New York State Dept. of Motor Vehicles

**TABLE 38
NEW YORK STATE
CRASHES ON ROAD SYSTEM BY JURISDICTION**

	1991			1992			1993			1994			1995		
	Total Crashes	Fatal	Pers. Inj.	Total Crashes	Fatal	Pers. Inj.	Total Crashes	Fatal	Pers. Inj.	Total Crashes	Fatal	Pers. Inj.	Total Crashes	Fatal	Pers. Inj.
Total	274,368	1,793	188,986	258,109	1,642	193,067	256,741	1,621	192,277	258,612	1,521	191,035	252,663	1,545	188,926
State Routes	61,270	581	40,258	57,993	544	41,154	58,639	536	41,707	59,147	524	41,280	57,184	499	40,151
County Routes	34,883	299	23,189	29,347	231	21,157	21,895	235	15,786	21,566	200	15,384	21,353	214	15,165
Town Routes	22,832	143	14,306	21,811	164	14,840	26,003	188	17,623	27,331	170	18,323	26,730	188	18,153
Municipal Streets	124,854	565	91,469	120,765	527	95,897	121,901	497	96,952	121,776	448	95,967	119,405	476	95,802
Parkways	13,086	90	8,985	12,449	80	8,970	12,548	90	9,183	12,243	73	9,018	11,408	75	8,523
Thruway	2,693	33	1,714	2,375	30	1,629	2,560	23	1,719	2,805	31	1,701	2,774	26	1,725
Other Interstate	13,134	81	8,652	11,946	66	8,859	12,091	52	8,965	12,470	74	8,939	12,695	67	9,039
Unspecified	1,616	1	413	1,423	0	561	1,104	0	342	1,274	1	423	1,114	0	368

	1996			1997			1998			1999			2000		
	Total Crashes	Fatal	Pers. Inj.	Total Crashes	Fatal	Pers. Inj.	Total Crashes	Fatal	Pers. Inj.	Total Crashes	Fatal	Pers. Inj.	Total Crashes	Fatal	Pers. Inj.
Total	249,911	1,446	185,289	262,965	1,487	182,188	306,646	1,395	181,766	356,981	1,460	182,768	392,245	1,358	188,770
State Routes	58,454	496	40,634	63,449	496	39,198	77,406	448	37,526	89,026	497	38,177	98,058	453	39,421
County Routes	21,733	205	15,246	23,941	209	14,726	29,398	217	14,299	33,144	232	14,004	36,151	205	14,222
Town Routes	26,321	158	17,555	29,387	170	17,356	37,274	160	17,222	41,289	163	16,995	47,618	164	18,137
Municipal Streets	114,903	424	92,118	116,777	432	91,326	127,583	403	92,748	150,049	387	92,391	162,121	366	95,097
Parkways	11,608	77	8,574	11,948	81	8,693	13,754	76	8,721	16,428	87	9,246	18,216	68	9,712
Thruway	2,989	19	1,881	3,229	23	1,706	4,075	27	1,649	5,419	23	1,857	6,132	27	1,853
Northway							819	4	328	1,066	9	360	1,181	3	345
Other Interstate	12,771	67	8,946	13,013	76	8,828	14,767	60	8,830	18,918	61	9,340	20,716	72	9,464
Unspecified	1,132	0	335	1,221	0	355	1,570	0	443	1,642	1	398	2,052	0	519

Source: New York State Dept. of Motor Vehicles r = revised

TABLE 39
**DOWNSTATE % OF NEW YORK STATE
 CRASHES ON ROAD SYSTEM BY JURISDICTION**

	1991			1992			1993			1994			1995		
	Total Crashes	Fatal	Pers. Inj.	Total Crashes	Fatal	Pers. Inj.	Total Crashes	Fatal	Pers. Inj.	Total Crashes	Fatal	Pers. Inj.	Total Crashes	Fatal	Pers. Inj.
Total	69.3	57.3	70.3	69.9	58.6	70.5	69.5	56.9	70.6	69.0	55.4	70.7	68.5	56.1	70.5
State Routes	44.9	32.0	43.7	44.5	31.6	43.0	43.6	31.2	42.5	43.9	29.4	43.5	42.4	30.9	42.2
County Routes	62.1	40.1	60.7	56.8	36.8	55.2	42.8	32.8	42.2	42.5	35.5	42.3	40.7	29.9	41.1
Town Routes	65.4	47.6	63.4	69.4	55.5	67.3	74.8	57.4	72.7	73.5	52.4	73.2	71.7	56.9	72.0
Municipal Streets	80.2	87.4	82.0	82.0	89.8	83.0	82.2	87.7	83.6	81.5	88.2	83.2	81.9	85.7	83.6
Parkways	98.8	98.9	99.0	98.9	97.5	99.3	98.9	98.9	99.1	98.7	98.6	98.9	98.9	100.0	99.2
Thruway	46.3	27.3	46.3	44.5	33.3	45.4	43.2	17.4	44.0	44.6	32.3	47.3	40.9	26.9	44.8
Other Interstate	81.2	76.5	82.8	80.4	80.3	82.2	80.2	80.8	82.4	78.8	68.9	81.5	78.6	77.6	81.6
Unspecified	58.4	0.0	57.6	59.7	0.0	63.8	61.6	0.0	63.7	60.0	100.0	65.2	61.8	0.0	66.3

	1996			1997			1998			1999			2000		
	Total Crashes	Fatal	Pers. Inj.	Total Crashes	Fatal	Pers. Inj.	Total Crashes	Fatal	Pers. Inj.	Total Crashes	Fatal	Pers. Inj.	Total Crashes	Fatal	Pers. Inj.
Total	67.9	52.6	70.2	65.9	56.9	70.5	63.5	55.2	72.0	62.9	55.3	71.5	62.2	54.2	71.5
State Routes	42.4	28.0	42.6	41.0	31.0	41.8	40.4	30.4	43.3	38.1	35.6	42.0	37.9	32.2	42.4
County Routes	40.9	29.3	41.7	39.3	35.4	41.3	38.6	28.1	43.0	36.8	25.9	42.7	35.4	32.2	41.4
Town Routes	71.7	49.4	72.3	70.4	57.1	71.0	71.7	61.9	73.4	68.5	57.7	72.0	66.5	51.8	71.1
Municipal Streets	81.7	84.2	83.5	80.3	87.3	84.3	77.1	84.4	84.9	78.2	88.6	85.1	77.9	85.2	85.4
Parkways	98.8	97.4	99.1	98.6	97.5	99.3	98.4	100.0	99.3	98.2	98.9	99.2	98.3	100.0	99.2
Thruway	44.5	26.3	47.3	37.9	26.1	43.1	38.0	40.7	42.4	39.3	26.1	47.3	38.6	37.0	44.4
Northway	0.0	0.0	0.0	0.0	0.0	0.0	0.0	0.0	0.0	0.4	0.0	1.1	0.0	0.0	0.0
Other Interstate	77.9	68.7	80.4	74.1	77.6	80.1	71.3	75.0	82.6	72.5	67.2	81.4	70.6	68.1	80.2
Unspecified	57.5	0.0	55.2	53.6	0.0	59.7	50.5	0.0	53.5	48.8	100.0	52.0	45.8	0.0	53.0

Source: New York State Dept. of Motor Vehicles

TABLE 40
TWO VEHICLE COLLISIONS
BY MANNER OF COLLISION

	1999			2000		
	New York State	Suburbs	New York City	New York State	Suburbs	New York City
Rear End	79,172	27,792	27,293	86,821	30,757	29,482
Overtaking	35,866	10,468	16,998	42,633	12,339	20,438
Left Turn	26,385	9,666	7,424	26,580	9,738	7,474
Right Angle	56,136	17,520	19,566	62,829	19,620	21,614
Right Turn	7,116	2,385	2,544	7,285	2,483	2,660
Head On	3,959	1,390	828	4,193	1,458	921
Sideswipe	7,444	2,363	2,139	8,406	2,760	2,428
All Other	15,287	4,292	6,330	15,462	4,360	6,461
	231,365	75,876	83,122	254,209	83,515	91,478

Source: New York State Dept. of Motor Vehicles

TABLE 41
2000 VEHICLE CRASHES
 BY DAY OF WEEK

	Sunday	Monday	Tuesday	Wednesday	Thursday	Friday	Saturday
Bronx	2,443	2,708	2,770	2,745	2,765	3,446	3,076
Kings	4,839	5,441	5,532	5,357	5,493	5,900	5,589
New York	3,011	3,288	3,511	3,519	3,613	4,180	3,487
Queens	4,596	5,131	5,279	5,366	5,067	5,667	5,472
Richmond	658	844	888	936	969	1,028	935
NEW YORK CITY	15,547	17,412	17,980	17,923	17,907	20,221	18,559
Dutchess	834	942	984	1,039	1,042	1,176	1,024
Nassau	3,675	5,118	5,768	5,829	5,790	6,354	5,182
Orange	1,138	1,269	1,276	1,282	1,502	1,750	1,387
Putnam	352	352	364	385	373	439	384
Rockland	840	1,060	1,130	1,083	1,016	1,253	880
Suffolk	3,444	4,812	4,990	5,005	5,150	6,182	5,271
Westchester	1,960	2,647	2,850	2,749	2,996	3,413	2,538
NEW YORK SUBURBS	12,243	16,200	17,362	17,372	17,869	20,567	16,666
DOWNSTATE NY	27,790	33,612	35,342	35,295	35,776	40,788	35,225
NEW YORK STATE	44,928	53,624	56,041	56,214	58,473	66,617	56,348

Source: New York State Dept. of Motor Vehicles

TABLE 42
2000 VEHICLE CRASHES
BY VEHICLE TYPE

	Passenger Car	Motorcycle	Bus/Taxi/ For Hire	School Bus	Emergency Vehicle	Truck/ Tractor	Towing Vehicle	All Other
Bronx	28,255	227	4,089	108	280	3,048	78	2,904
Kings	57,019	349	6,452	178	564	4,936	113	5,662
New York	28,086	378	7,798	77	471	5,362	74	3,974
Queens	57,856	385	4,996	170	310	4,393	126	4,949
Richmond	10,238	81	376	16	59	732	17	901
NEW YORK CITY	181,454	1,420	23,711	549	1,684	18,471	408	18,390
Dutchess	9,510	83	139	27	50	1,262	9	467
Nassau	65,086	322	1,628	240	234	4,293	91	3,448
Orange	12,846	114	293	42	62	2,044	18	625
Putnam	3,636	48	55	12	11	411	6	179
Rockland	11,468	81	347	56	38	983	17	597
Suffolk	55,709	383	1,116	263	202	5,604	91	3,817
Westchester	29,642	193	918	107	110	2,232	32	2,113
NEW YORK SUBURBS	187,897	1,224	4,496	747	707	16,829	264	11,246
DOWNSTATE NY	369,351	2,644	28,207	1,296	2,391	35,300	672	29,636
NEW YORK STATE	557,287	4,308	31,275	1,899	3,181	75,240	914	40,735

Source: New York State Dept. of Motor Vehicles

TABLE 43
TRANSIT ACCIDENTS
METROPOLITAN TRANSPORTATION AUTHORITY

	1990	1991	1992	1993	1994	1995	1996	1997	1998	1999	2000
BUS TRANSIT											
MTA/NEW YORK CITY TRANSIT											
Total Accidents	69	47	49	63	64	62	46	43	56	47	47
Fatalities	10	5	4	10	3	5	6	5	4	9	4
Injuries	325	233	274	243	282	323	273	208	410	291	351
MTA/LONG ISLAND BUS											
Total Accidents	5	4	4	4	6	1	7	3	9	9	6
Fatalities	1	0	1	0	0	1	0	0	0	0	3
Injuries	0	1	18	18	27	0	29	19	45	62	15
TOTAL BUS TRANSIT											
Total Accidents	74	51	53	67	70	63	53	46	65	56	53
Fatalities	11	5	5	10	3	6	6	5	4	9	9
Injuries	325	234	292	261	309	323	302	227	455	353	366
RAIL RAPID TRANSIT											
MT/NEW YORK CITY TRANSIT											
Total Accidents	30	23	21	19	13	12	15	10	10	12	10
Fatalities	7	18	9	3	4	4	3	2	4	3	4
Injuries	240	189	105	103	22	126	62	98	7	69	113
MTA/STATEN ISLAND RAILWAY											
Total Accidents	0	2	0	1	0	1	3	0	1	1	1
Fatalities	0	0	0	0	0	0	0	0	0	0	0
Injuries	0	0	0	2	0	0	0	0	0	0	0
TOTAL RAIL RAPID TRANSIT											
Total Accidents	30	25	21	20	15	13	18	10	11	13	11
Fatalities	7	18	9	3	4	4	3	2	4	3	4
Injuries	240	189	105	105	29	126	62	98	7	69	113
SUBURBAN RAIL											
MTA/METRO-NORTH RAILROAD											
Total Accidents	2	1	2	4	7	4	7	6	7	1	4
Fatalities	0	1	0	0	0	0	1	0	0	0	0
Injuries	0	3	1	2	3	20	0	1	4	0	0
MTA/LONG ISLAND RAIL ROAD											
Total Accidents	13	22	15	18	11	21	26	22	14	8	13
Fatalities	5	4	3	5	3	5	8	4	2	2	1
Injuries	6	12	10	1	6	69	15	2	2	3	8
TOTAL SUBURBAN RAIL											
Total Accidents	15	23	17	22	18	25	33	28	21	9	17
Fatalities	5	5	3	5	3	5	9	4	2	2	1
Injuries	6	15	11	3	9	89	15	3	6	3	8
TOTAL TRANSIT ACCIDENTS											
Total Accidents	119	99	91	109	103	101	104	84	97	78	81
Fatalities	23	28	17	18	10	15	18	11	10	14	14
Injuries	571	438	408	369	347	538	379	328	468	425	487

Source: New York State Public Transportation Safety Board

TABLE 44
**TRANSIT ACCIDENTS RATIO
 PER MILLION RIDERS**

	1990	1991	1992	1993	1994	1995	1996	1997	1998	1999	2000
BUS TRANSIT											
MTA/NEW YORK CITY TRANSIT	0.148	0.103	0.109	0.141	0.142	0.135	0.094	0.079	0.091	0.071	0.067
MTA/LONG ISLAND BUS	0.226	0.202	0.220	0.216	0.316	0.054	0.273	0.112	0.319	0.307	0.201
TOTAL BUS TRANSIT	0.151	0.107	0.113	0.144	0.149	0.132	0.103	0.081	0.101	0.080	0.073
RAIL RAPID TRANSIT											
MTA/NEW YORK CITY TRANSIT	0.029	0.023	0.021	0.018	0.012	0.011	0.014	0.009	0.008	0.009	0.007
MTA/STATEN ISLAND RAILWAY	0.000	0.370	0.000	0.196	0.000	0.196	0.600	0.000	0.278	0.256	0.244
TOTAL RAIL RAPID TRANSIT	0.029	0.025	0.021	0.019	0.012	0.012	0.016	0.009	0.009	0.010	0.008
SUBURBAN RAIL											
MTA/METRO-NORTH RAILROAD	0.035	0.018	0.035	0.069	0.116	0.066	0.114	0.096	0.108	0.015	0.056
MTA/LONG ISLAND RAIL ROAD	0.180	0.313	0.214	0.251	0.150	0.285	0.349	0.290	0.174	0.097	0.153
TOTAL SUBURBAN RAIL	0.116	0.182	0.134	0.170	0.135	0.186	0.243	0.202	0.145	0.060	0.109
TOTAL TRANSIT ACCIDENTS	0.072	0.062	0.057	0.067	0.061	0.059	0.059	0.046	0.049	0.037	0.036

Source: New York State Public Transportation Safety Board

TABLE 45
**TRANSIT ACCIDENTS RATIO
 PER MILLION MILES TRAVELED**

	1990	1991	1992	1993	1994	1995	1996	1997	1998	1999	2000
BUS TRANSIT											
MTA/NEW YORK CITY TRANSIT	0.748	0.514	0.546	0.711	0.713	0.700	0.482	0.441	0.617	0.498	0.475
MTA/LONG ISLAND BUS	0.538	0.430	0.440	0.440	0.659	0.110	0.686	0.313	0.938	0.789	0.508
TOTAL BUS TRANSIT	0.728	0.506	0.536	0.686	0.709	0.645	0.502	0.429	0.648	0.530	0.479
RAIL RAPID TRANSIT											
MTA/NEW YORK CITY TRANSIT	0.097	0.078	0.069	0.064	0.043	0.038	0.049	0.032	0.033	0.038	0.031
MTA/STATEN ISLAND RAILWAY	0.000	0.952	0.000	0.556	0.000	0.556	1.429	0.000	0.476	0.476	0.500
TOTAL RAIL RAPID TRANSIT	0.096	0.084	0.068	0.067	0.043	0.041	0.058	0.031	0.035	0.041	0.034
SUBURBAN RAIL											
MTA/METRO-NORTH RAILROAD	0.056	0.029	0.054	0.107	0.186	0.106	0.167	0.138	0.155	0.021	0.082
MTA/LONG ISLAND RAIL ROAD	0.229	0.396	0.274	0.330	0.201	0.375	0.476	0.380	0.241	0.139	0.228
TOTAL SUBURBAN RAIL	0.163	0.254	0.186	0.239	0.195	0.267	0.342	0.276	0.203	0.086	0.161
TOTAL TRANSIT ACCIDENTS	0.236	0.203	0.183	0.224	0.209	0.200	0.203	0.160	0.190	0.149	0.150

Source: New York State Public Transportation Safety Board